

Making the connection

between people and water resources



TIP OF THE MITT WATERSHED COUNCIL
2015 ANNUAL REPORT



Our Mission

The Tip of the Mitt Watershed Council speaks for Northern Michigan's waters. We are dedicated to protecting our lakes, streams, wetlands, and groundwater through respected advocacy, innovative education, technically sound water quality monitoring, thorough research, and restoration actions. We achieve our mission by empowering others and we believe in the capacity to make a positive difference. We work locally, regionally and throughout the Great Lakes Basin to achieve our goals.

2015 Staff

Executive Director
Gail Gruenwald

Administration
Lindy Buffington
Sandy Schreck

Policy & Advocacy
Jennifer McKay
Grenetta Thomassey, Ph.D.

Watershed Protection
Maria Affhalter
Jennifer Buchanan
Matt Claucherty
Kevin Cronk
Dan Myers

Development & Communications
Kristy Beyer
Kate Cwikiel
Debbie Esposito

AmeriCorps Volunteer
Mackenzie Dix

2015 Board Memebers

Claire Rasmussen, President
Al Terry, Vice President
John Kafer, Treasurer
Jan Quaine, Secretary
Tom Adams
Dave Clapp
Charlie Gano
Jim Ford
Bob Kingon
Larry Levensgood
Susan Page
Sue Reck
Pam Roudi
Ham Schirmer
Scott Smith
Susan Stewart



Dear Friends,

Accomplishments highlighted in the 2015 Annual Report illustrate the Watershed Council's leadership and professionalism in connecting protection of our water resources with citizens. Executive Director Gail Gruenwald along with her outstanding staff has led the organization to yet another level of excellence.

These successful efforts are rooted in the continuing development of the watershed academy initiative educating our youth and carrying through to volunteer stream monitoring participants. It is further sustained with the Low Impact Development program, the National Shorelines Partnership and the rain garden projects within the Stormwater Matters campaign.

Tip of the Mitt Watershed Council is also a respected leader in water resource issue management fostering communication of science based information for informed decision making. Advocacy by the Watershed Council with others led to the signing of the Microbead-Free Waters Act of 2015. In addition, the topic of oil and gas transportation in the Great Lakes has seen significant contributions and participation from stakeholders under the Watershed Council's facilitation.

Our activities are supported by a healthy financial position and a forward thinking strategic plan to sustain the organization for future needs. Thank you for your support and I believe the results demonstrate how worthwhile your involvement is!

Claire R. Rasmussen
Board President



Protecting and restoring Northern Michigan's waters takes the coordinated effort of hundreds of volunteers, financial partners, and other like minded organizations who come together to plan, prioritize, and implement the actions needed to restore and sustain our water resources. Through these important connections and using sound science as our guide, our Watershed Protection Team was able to accomplish a great deal to protect our water resources in 2015.

Stormwater Matters: Low Impact Development Workshop

As part of our Little Traverse Bay Watershed: Stormwater Matters project, the Watershed Council hosted a Low Impact Development (LID) workshop. The seminar was attended by over 30 engineers, architects, landscape architects, landscapers, and local government officials. Featured presenters were Don D. Carpenter, PhD, PE, LEED® AP, a professor of Civil Engineering and Director of the Great Lakes Stormwater Management Institute at Lawrence Technological University, and Ralph Reznick, P.E., Nonpoint Source Unit, Michigan Department of Environmental Quality. Participants learned about the principles of LID and how to incorporate these water quality-friendly techniques into their work.

Stormwater Matters: Water Quality Government Tours

As part of a grant from the Michigan Coastal Zone Management Program in the Michigan Department of Environmental Quality, the Watershed Council hosted a tour for local government officials in the Little Traverse Bay Watershed. On August 26th, we started the tour at Bear Creek Township Hall with breakfast and introductions. We also presented "Stormwater 101" to provide the basics of stormwater management concerns to officials. We then took a bus to the North Central Michigan College stormwater treatment system, followed by a stop at the Bear River to review stormwater management systems with the City of Petoskey. We then visited the new Tannery Creek footbridge and reviewed stormwater issues and plans for improvement at the site. The final stop was the Harbor Springs waterfront to visit the City's stormwater monitoring and treatment systems.

Stormwater Matters: Rain Garden Workshop

On September 26, 2015 volunteers joined Tip of the Mitt Watershed Council and homeowners Jane and Cliff Denay to install a rain garden at the Denay's residence in Petoskey. Attendees heard a short presentation about the benefits and design of rain gardens and planted a variety of Michigan native plants. Support for the rain garden workshop was provided by the Frey Foundation and Jane and Cliff Denay.



Homeowners Jane and Cliff Denay (forefront), along with Watershed Council volunteers, built a rain garden to protect Little Traverse Bay from polluted stormwater runoff during the Rain Garden Workshop.



Statewide Natural Shoreline Recognition Program

Tip of the Mitt Watershed Council and the Michigan Natural Shoreline Partnership (MNSP) promoted natural shorelines on inland lakes through education, research, trainings, and policy initiatives.

During 2015, we created a statewide program that recognizes lakeshore property owners who maintain or install natural shorelines. Mackenzie Dix, Huron Pines AmeriCorps member serving at Tip of the Mitt Watershed Council, assisted with the initial coordination of this effort. The Watershed Council and MNSP enlisted the help of several area lake associations, including Mullett Lake Area Preservation Society, Elk-Skegemog Lakes Association, Pickerel-Crooked Lake Association, Crystal Lake and Watershed Associations, Glen Lake Association, and the Lake Charlevoix Association. The successful, statewide implementation of this program will make great strides in protecting the water quality of our inland lakes. The recognition program was launched in the Spring of 2016.

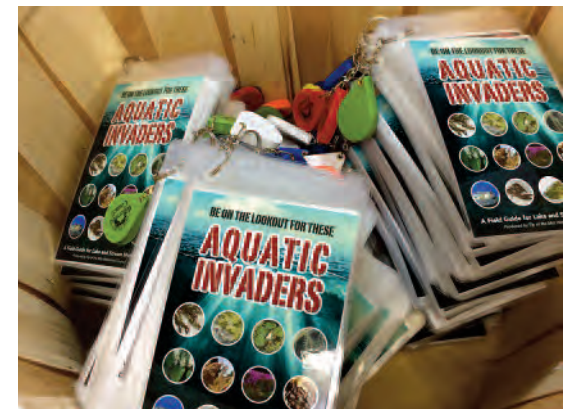


Bay View Rain Garden Initiative

The Bay View Rain Garden Initiative, which promotes the use of rain gardens throughout Bay View to manage stormwater runoff, was completed in the fall of 2015. The community rain gardens are located at the end of Encampment Avenue near the tennis courts, in front of the library on Park Avenue, behind the library on Encampment Avenue, and alongside Lakeview Avenue between Glendale and Fairview Avenues.

Rain gardens, also known as bioretention areas, are strategically located in the landscape to capture runoff from impervious surfaces. They help protect water quality by both reducing the volume of runoff that enters nearby surface waters or stormwater systems and by absorbing and filtering pollutants in the runoff.

This was the final component of the Little Traverse Bay Stormwater Management Initiative, a four-year project funded through the Great Lakes Restoration Initiative. A portion of this project was also funded by the Petoskey Harbor Springs Area Community Foundation.



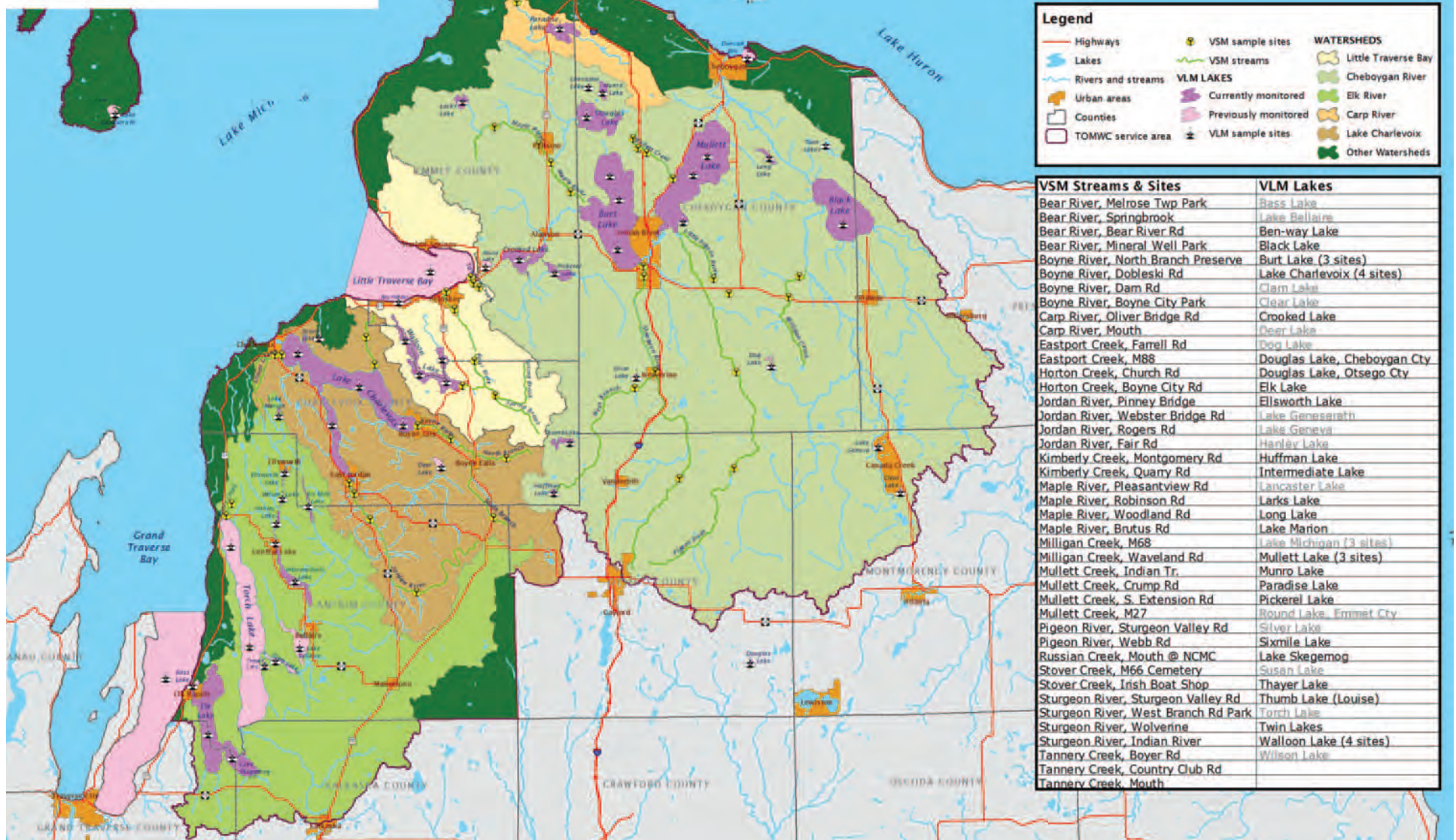
Aquatic Invasive Species Workshop

Thanks to a grant from the Michigan Department of Environmental Quality's Clean Water Fund, Tip of the Mitt Watershed Council in partnership with the Antrim Conservation District hosted an Aquatic Invasive Species Workshop in June at the Antrim Conservation District office in Bellaire. The 3-hour workshop taught residents in the Elk River Chain of Lakes area how to identify, document, and report a variety of aquatic invasive species.

C.A.K.E. Group Formed to Battle Invasive Species

In 2015, the Watershed Council began participating in a new group: the Charlevoix-Antrim-Kalkaska-Emmet (CAKE) Cooperative Invasive Species Management Area. CAKE was funded through the Michigan Invasive Species Grants Program (MISGP) to develop a cooperative network of partners to combat invasive species on a local and regional scale using inventories, treatment and assessment, and education and outreach.

2015 Volunteer Lake and Stream Monitoring Locations



Monitoring our waters is a perpetual year-long process. Whether we are in the field, in the lab, compiling data, or writing reports, there is always something to do. Our monitoring efforts rely heavily on the assistance of trained volunteers from the community that share our passion for protecting our water resources. Keeping a watchful eye on the health of our waters each year is an enormous job and we couldn't do it without their help.



Volunteer Lake Monitoring Update

In 2015, 52 volunteers monitored 30 sites on 20 lakes. The Tip of the Mitt Volunteer Lake Monitoring Program is our longest standing water quality monitoring program, with data on some lakes spanning three decades. The Watershed Council provides a training session each spring, equipment, and technical support to volunteers. In return, volunteers provide a wealth of data, which we use to assess the water quality and biological productivity of our lakes. Data are collected from early June through late August. Each week volunteers venture onto the lake in their personal watercraft to record water transparency and surface temperature while every other week they collect water samples for chlorophyll-a analysis. In addition, volunteers on a handful of lakes monitor dissolved oxygen.

Volunteer Stream Monitoring Update

Our Volunteer Stream Monitoring Program celebrated its 10th anniversary in 2015. Armed with waders, bug nets, and microscopes, adventurous volunteers examined the macroinvertebrates (bugs) of local streams to understand stream health. A healthy stream has a diverse community of pollution sensitive bugs. A stream with water quality problems will experience a decrease in macroinvertebrate diversity and a change in the community towards pollution tolerant bugs. One hundred sixty volunteers monitored 37 sites on 15 local streams. Data is used to track stream health over time and support restoration of degraded streams.

(Below) In 2015, Peter Manning with the Michigan Department of Attorney General, provided a keynote presentation during our Pipeline Workshop.



Tip of the Mitt Watershed Council addressed a number of issues in 2015. Some of the threats facing our watersheds were invasive species, the accumulation of plastic microbeads in our waters, and net-pen aquaculture. The Watershed Council also continues to be highly engaged in oil and gas issues including hydraulic fracturing and the Enbridge Line 5 pipeline that crosses the Straits of Mackinac and traverses through our service area.

These battles to protect our waters are not won single-handedly. We know that the future of our waters lies in the strong connections we make between people and their water resources. Creating, updating and reviewing watershed management plans is key. In 2015 the Watershed Council initiated the Watershed Management Plans for Duncan & Grass Bay Watersheds in Cheboygan County and the Elk River Chain of Lakes Watershed.



In 2015, over 700 people, including staff from Tip of the Mitt Watershed Council, were involved in a pipeline spill simulation in the Straits of Mackinac.

Northern Michigan Pipeline Education Project

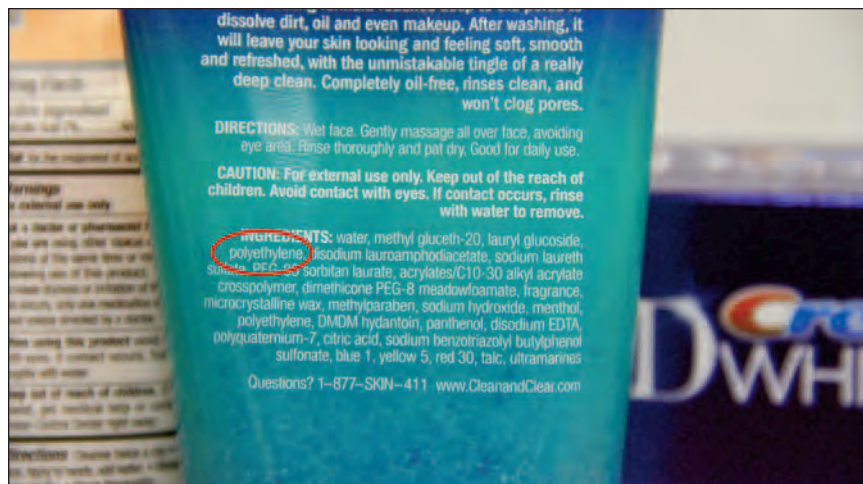
On August 27th, approximately 100 community members gathered at North Central Michigan College to spend the day discussing pipelines. The Watershed Council hosted the Michigan Pipeline Workshop to provide the public with accurate information about pipelines in our area. The workshop was also intended to foster open communication by providing the opportunity for dialogue and direct communication between community members, pipeline operators, and federal agencies.

Representatives from Enbridge Energy, U.S. Environmental Protection Agency, U.S. Coast Guard, National Oceanic and Atmospheric Administration, and more were on hand to present detailed information on aspects of pipeline operation, safety, and spill response. In addition, Peter Manning with the Michigan Department of Attorney General provided a keynote presentation on recent recommendations made by the Michigan Petroleum Task Force. The workshop was extremely successful, leaving attendees with an improved understanding of pipeline operations and safety within our community. (A video of the workshop is available on the Watershed Council website.)

The workshop was just one part of our Northern Michigan Pipeline Education Project, which was funded by the Pipeline and Hazardous Materials Safety Administration. The Pipeline Education Project also included development of a publication: *Understanding Northern Michigan Pipelines, which is a citizen's guide to pipeline identification, spill prevention, emergency response, and safety*. The citizen's guide is available online, at our office, or by calling 231-347-1181.

Pipeline Update

- In the Spring of 2015, Jennifer McKay, Policy Specialist for Tip of the Mitt Watershed Council, was appointed to the Michigan Pipeline Safety Advisory Board by Governor Snyder. The focus of the Board is to help protect Great Lakes natural resources from the risks posed by the State's network of pipelines. Jennifer McKay represents environmental groups on the Board.
- In early October, Senator Gary Peters met with Tip of the Mitt Watershed Council staff and representatives of the U.S. Coast Guard, U.S. Environmental Protection Agency, Michigan Department of Environmental Quality, and the Charlevoix, Cheboygan, Emmet County Office of Emergency Management regarding pipeline safety.
- On September 24, 2015, over 700 people, including staff from Tip of the Mitt Watershed Council, were involved in a pipeline spill simulation in the Straits of Mackinac. Also involved were numerous Enbridge staff from around the U.S. and Canada, representatives from the U.S. Coast Guard, U.S. Environmental Protection Agency, state and local government agencies, first responders, and spill contractors, all of which will be involved should an actual spill occur. Although no oil was used in the simulation, actual techniques and equipment were deployed.
- Also in 2015, the Watershed Council assisted in the development of language for federal bills regarding pipeline safety.



Microbeads - Banned

The Watershed Council advocated for a ban on microbeads in beauty and personal care products in 2015. President Obama signed the Microbead-Free Waters Act of 2015 on December 28, 2015. As a result, the manufacturing of plastic microbeads will stop by July 1, 2017 and the sale of new cosmetic products containing microbeads will end by July 1, 2018.

The Microbead-Free Waters Act of 2015 enjoyed an unusual level of bipartisan support, sailing through Congress in less than one month with little controversy. This was truly a momentous win for the Great Lakes.

Net-Pen Aquaculture on the Great Lakes

In September 2015, the Watershed Council Policy Team provided public comment on the issue of net-pen aquaculture in the Great Lakes. While the Watershed Council is not opposed to aquaculture in general, we are opposed to exposing the Great Lakes to massive amounts of concentrated fish effluent and other organic waste.

In late 2015, Senate Bill 0526 was introduced to ban fish farming in the Great Lakes and connecting waters. It was then referred to the Senate Agriculture Committee for review.



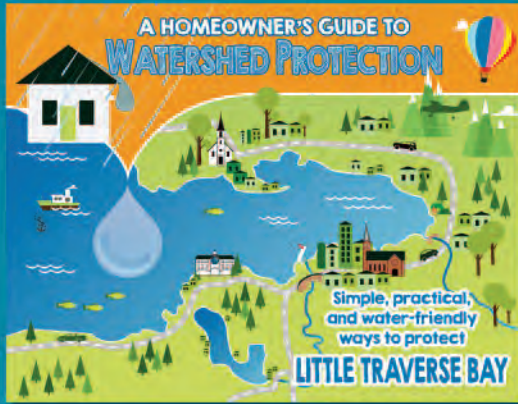
In 2015, the Watershed Council worked on the first draft of a new Watershed Plan for Duncan-Grass Bays on Lake Huron outside of the City of Cheboygan. This draft was reviewed by members of the newly formed Advisory Committee. Next year, we will submit the plan for approval to the Michigan Department of Environmental Quality (MDEQ) and the US Environmental Protection Agency (EPA).

Elk Rapids Chain of Lakes Watershed Management Plan

In 2015, the Watershed Council recruited a team of University of Michigan School of Natural Resources and Environment (SNRE) Master's students to create a comprehensive first draft of a stand-alone Watershed Plan for the Elk River Chain of Lakes (ERCOL) in Antrim County. This new Plan will come under the umbrella of the larger Grand Traverse Bay Watershed Plan, which will be updated by our friends at The Watershed Center Grand Traverse Bay starting in 2016.

In the summer of 2015, the SNRE team surveyed 101 road/stream crossings (RSX) and performed "spot checks" on 37 additional crossings in the Elk River Chain of Lakes Watershed. This inventory work is essential to identifying water quality and fish passage problem areas.

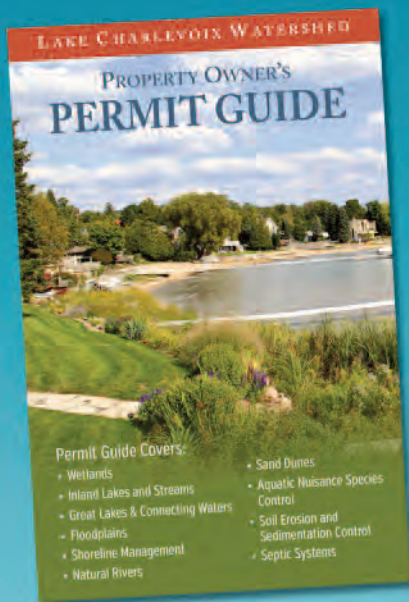
The results of their study and the new Watershed Management Plan are scheduled to be completed in spring of 2016.



Stormwater Matters: A Homeowner's Guide to Watershed Protection

In 2015, the Watershed Council developed and distributed a 20-page booklet for Little Traverse Bay residents. The publication promotes strategies for stormwater management. Whether to satisfy the prescriptive standards for a new build or remodel, as a voluntary retrofit for an existing stormwater system, or simply to beautify the landscape, readers can learn about various low-impact development techniques such as rain gardens, green roofs, permeable pavements, greenbelts, bioswales, native plants, and rain barrels.

Funding for this project was provided in part by the Michigan Coastal Zone Management Program, Office of the Great Lakes, Department of Environmental Quality, under the National Coastal Zone Management Program, through a grant from the National Oceanic and Atmospheric Administration, U.S. Department of Commerce, and a grant from the Frey Foundation.



Lake Charlevoix Property Owner's Permit Guide

Our actions in and around Lake Charlevoix can have direct, and often times adverse, impacts on natural resources. For this reason policies have been adopted at the federal, state, and local levels to regulate certain activities to insure water resources are protected. In January 2015, the Watershed Council published a booklet to help property owners better understand which permits they need when doing certain types of work. Funding for this project was provided by the Charlevoix County Community Foundation.

Digital Information at your fingertips

In 2015, the Watershed Council focused on additional ways to reach out to the community through electronic communications. In the summer, we launched a new website that offers over 450 pages of topic-specific information ranging from current policy and advocacy issues, to watershed quality monitoring, invasive species, and over 200 publications available for downloading. Visit and bookmark our site at: <http://www.watershedcouncil.org>.

Another avenue of reaching out via electronic communications was by video recording workshops and meetings and posting them on our YouTube Channel. This allows people to view the content online at their convenience and to share our message with others.

We also expanded our social media reach by creating an Instagram account (@tipofthemittwatershed) and participating in Petoskey News Review audio podcasts. Visit <http://www.watershedcouncil.org/videos-presentations> and click on the "Video Playlist" button.



2015 Spring Session



Connecting People through...

INNOVATIVE EDUCATION

Tip of the Mitt Watershed Council is dedicated to providing students with educational opportunities that focus on watershed protection. Whether we are modeling good stewardship through a river cleanup, exploring the hands-on watershed model, or peering through the microscope at the exciting world of aquatic macroinvertebrates, we know that we are inspiring the next generation of watershed protection stewards.

Watershed Academy

In the Spring of 2015, the Watershed Council launched the The Tip of the Mitt Watershed Academy. This program engages high school biology students in citizen science efforts and place-based education. Academy members learn stream monitoring techniques and collect data that contributes to Tip of the Mitt Watershed Council's water quality monitoring efforts. The Watershed Academy provides an opportunity for members to connect with both their communities and local water resources. Academy members participate in meaningful environmental stewardship, gain insight into relevant conservation issues and new career opportunities, as well as share their experience with the greater community.

Schools participating in the Watershed Academy pilot program included: Alanson High School, Boyne City High School, East Jordan High School, Harbor Springs High School, and Pellston High School. The Watershed Academy pilot program also engaged other local resource partners, including: Little Traverse Conservancy, Little Traverse Bay Bands of Odawa Indians Natural Resources Department, University of Michigan Biological Station, Friends of the Boyne River, and Friends of the Jordan River.



2015 Fall Session

Financial support for the 2015 Watershed Academy was provided by:



Oleson Foundation



and Watershed Council Members



Waganakising Bay Day

In June, the first ever Waganakising Bay Day water festival was held at Bayfront Park in Petoskey. Designed to connect the community with the Little Traverse Bay region, the free, family-friendly event was attended by hundreds of people of all ages who enjoyed over 20 hands-on booths hosted by a number of local organizations. Funding for this event was provided by Tip of the Mitt Watershed Council, DTE Energy, Cranbrook Institute of Science, Petoskey-Harbor Springs Area Community Foundation, Little Traverse Conservancy, Walloon Lake Trust and Conservancy, and Little Traverse Bay Bands of Odawa Indians.





Ice Breaker Speaker Series

Our annual winter speaker series offered a wide variety of topics. A feature presentation by award-winning writers, photographers, and conservationists Joanie and Gary McGuffin filled the library conference room at North Central Michigan College (NCMC). This featured presentation was offered in partnership with NCMC and Lake Superior Watershed Conservancy. Other speaker topics in 2015 included presentations on the Elk River Chain of Lakes fish shelter project, new aquatic invaders, close encounters of the macroinvertebrate kind, microbeads, and the Sturgeon for Tomorrow's Guardian Program.

Students Experience Lake Charlevoix

Over 350 students from the Lake Charlevoix Watershed boarded the Beaver Islander Ferry for a cruise on Lake Charlevoix and hands-on water science activities. Students learned how to protect the water quality of the Lake Charlevoix Watershed. This marked the 21st consecutive year of this program hosted by Tip of the Mitt Watershed Council and the Lake Charlevoix Association.



Inland Seas on Little Traverse Bay

In June 2015, the Watershed Council, in partnership with Inland Seas Education Association, offered local students a unique educational opportunity on board the 77-foot schooner Inland Seas. A variety of hands-on activities took place dockside and then the students set sail on Little Traverse Bay.

Boy Scout Camporee

In the spring of 2015, Watershed Council AmeriCorps member Matt Claucherty was asked to participate in the annual Boy Scout Camporee centered around Sturgeon for Tomorrow's Sturgeon Guardian program. Boy Scouts from all around Michigan learned about aquatic macroinvertebrates, water quality, and stream monitoring on the Black River.

Raven Hill Career Expo

During the spring of 2015, students learned how fun and rewarding a career in science can be during the Raven Hill Career Expo. Watershed Council staff and interns introduced students to aquatic macroinvertebrates, water quality, and stream monitoring techniques.



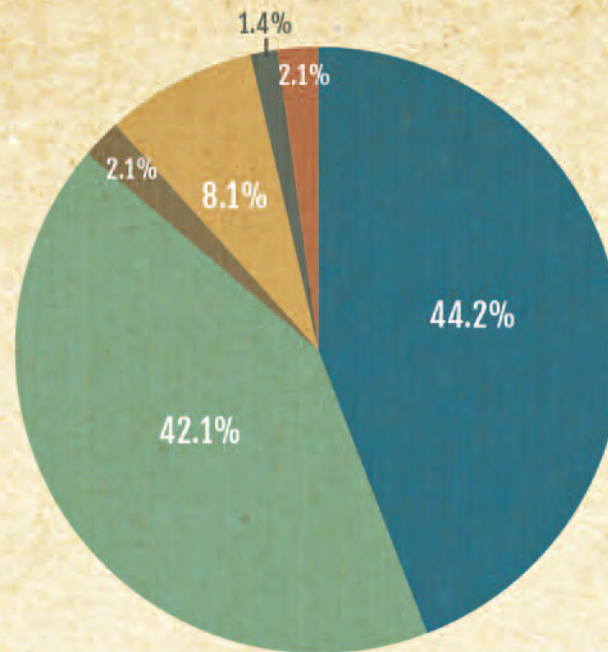
Bear River Cleanup

On August 22, 2015, 126 volunteers participated in the 11th "Healing the Bear" Bear River Cleanup. These volunteers cleaned 10.5 river miles and 21 road crossings of the Bear River and its tributaries, removing approximately 10 cubic yards of trash and recyclables. Volunteers were treated to breakfast, lunch, and t-shirts donated by local businesses in return for participation in the family-friendly event.

Support for this project was provided by Michigan Volunteer River, Stream and Creek Cleanup Program, Michigan Department of Environmental Quality, Great Lakes Commission, Petoskey Plastics, Meijer, BC Pizza of Petoskey, Plath's Meats, Emmet County Recycling Center, Rotary Club of Petoskey Sunrise, D&W Fresh Market, the Grain Train Natural Foods Market, McLaren Northern Michigan, City of Petoskey, Bearcub Outfitters, Michigan Maple Block, Northern Michigan RiverSweep, and Petoskey News-Review. Thank you to all for sponsoring last year's cleanup!

2015 FINANCIALS

After 36 years we are still going strong thanks to our members and financial supporters. Our strategic financial practices assure our partners that they are making a wise decision when investing in the Watershed Council. They know an investment in us is an investment in the future of our great water resources for generations to come. It is a privilege and honor that we do not take lightly.



REVENUE

Contributions	\$431,831
Grants	411,481
Contracts	20,633
Endowment Support	78,907
Asset Replacement Fund Inv.	(13,885)
Other	21,306

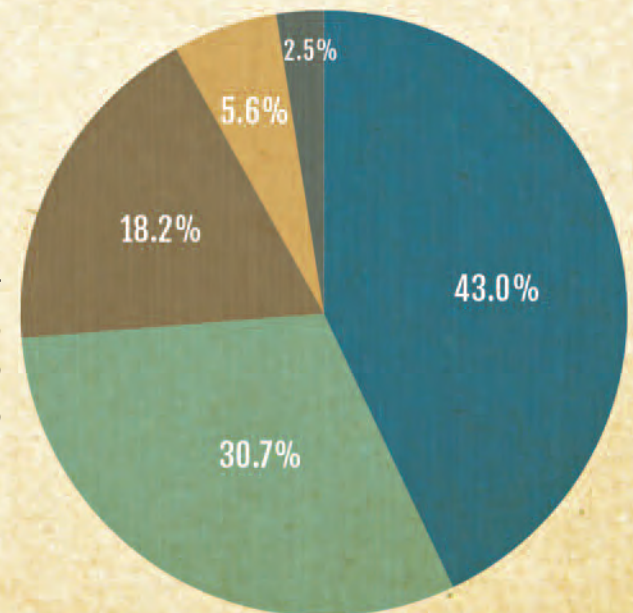
TOTAL **\$950,273**

Operating Fund Financials at a Glance

EXPENSES

Watershed Protection	\$417,487
Policy & Advocacy	298,644
Outreach & Education	176,673
Development	54,239
Management & General	24,479

TOTAL **\$971,521**



To view our audited financial statement go to
www.watershedcouncil.org/annual-reports

THANK YOU

To Our Membership and Supporters

If your name is not listed correctly in our annual report, please accept our apology and let us know about the error so we can update our records. Please call 231-347-1181. Thank you.

Benefactor

\$1,000 or more

Mrs. William O. Alden Jr.	Michael J. and Marjorie K. FitzSimons	Mr. and Mrs. Ernest H. Mainland	Ms. Ann Pringle
Mrs. Joanne Arbaugh	Ms. Susan S. Ford	Ed and Janet Mardigian	Steve and Brenda Ramsby
Mr. and Mrs. Ian Bund	Mr. and Mrs. Jeffrey S. Ford	Mr. and Mrs. Webb F. Martin	William H. Rudolph Jr.
Burt Lake Preservation Association	James W. and Laurie Ford	Mr. and Mrs. Michael McElroy	Ham and Barb Schirmer
Mr. Robert Bytwerk	Mr. Carroll J. Haas	Mr. and Mrs. H. Roemer McPhee III	Mrs. Roger B. Smith
Mr. Michael Cameron	Jack and Tucker Harris	Miller, Canfield, Paddock, & Stone, P.L.C.	Mr. Robert S. Troth
Mrs. Thomas H. Carruthers IV	Illinois Tool Works	Mr. and Mrs. David J. Neithercut	Mrs. Nancy Waldron
Mr. and Mrs. Thomas J. Carter	Thomas H. and Patricia L. Jeffs	Mr. and Mrs. Howard W. Newkirk	Walloon Lake Association
Charlevoix County Community Foundation	Cathy A. Kalahar	The Offield Family Foundation	Geer and Carrie Ellen Wilcox
Mr. and Mrs. David G. Crouse	Mr. and Mrs. Murray Kilgour	Mr. and Mrs. David P. Parker	Mr. John S. Wilson
Peter and Bonni Curran	Mr. Don Kopka	Mr. and Mrs. William A. Petzold	
Dole Family Foundation	Ms. Leslie Lee	Pickerel and Crooked Lakes Association	
Michael L. and Rhea A. Dow	Mr. and Mrs. Edward A. Lunt	Dr. and Mrs. Albert F. Polk Jr.	

Guardian

\$500 to \$999

Mr. and Mrs. Thomas S. Adams	Mr. and Mrs. Robert R. Frederick	Mr. and Mrs. Joseph W. Kimmell II	Marilyn and Dave Nichols	Mr. and Mrs. Thomas Snyder
American Spoon Foods, Inc.	Mr. and Mrs. Charles H. Gano	Mr. and Mrs. Edward Lapekas	Odawa Casino	Mr. and Mrs. Cliff Sorrell
Bank of America	Bill and Mardy Gast	Allen and Mary Ann Lassiter	Ms. Sally Olds	St. Mary's Cement, Inc.
Mr. and Mrs. Thomas G. Bickersteth	Kathleen S. Glass	John and Cleo Leppien	Mr. and Mrs. G. A. Olofsson Jr.	Mrs. Anne Symchych
Mr. and Mrs. Mark J. Bissell	Mr. and Mrs. John A. Griswold	Mr. and Mrs. Joseph Luther	Mr. and Mrs. Michael D. Parker	Dick Taylor
Mr. and Mrs. Robert W. Bleyaert	Rev. Debra Hansen	Marco, LLC	Ray and Lynn Pensinger	Mr. and Mrs. Howard A. Ternes
Mrs. Eleanor Bookwalter	Mr. and Mrs. Phillip T. Harrison	McBride Construction, Inc.	Mr. and Mrs. Gregory Peters	Mr. and Mrs. Paul D. Thomas
Mr. and Mrs. Norton L. Bretz	Mr. Thomas Heckert	Mr. Archibald McClure	R.E. Olds Foundation	Mr. and Mrs. Thomas Titcomb
Mr. and Mrs. Richard Bruening	Mr. and Mrs. Stephen A. Horn	Vaughn and Harriet McGraw DDS	Mr. and Mrs. Richard M Ricci	Torch Lake Protection Alliance
Mr. and Mrs. James A. Campbell	Dr. John and Joan Hutto	W. Sue McKinnon	Mr. and Mrs. Fred Rice III	Dr. Sarah Umar
Mr. Ralph R. Carruthers	Mr. and Mrs. David Irish	Mr. and Mrs. Patrick McNamara	Drs. N. Edward and Patricia Robinson	Jerry and Sharon VanKuiken
Gill and Patricia Clements	Greta Jacobsen	Mr. and Mrs. Ralph E. Miesel	Mr. and Mrs. Peter Schiff	Carolyn Workman and Kurt Wacker
Mr. and Mrs. William Crawford	Mr. and Mrs. Hamilton E. James	Jeff and Anne Miller Family Fund	Peter and Helen Schulze	Ward and Eis Gallery
Elk Skegemog Lakes Association	Edie and Fred Kaufmann	Mr. Thomas O. Mueller	Mr. and Mrs. Jeff Sinclair	Mr. and Mrs. Douglas A. Warner III
Mr. and Mrs. James H. Everest	Mr. and Mrs. James H. Keller	Patricia Saad and Andrew S. Muth	Mr. and Mrs. Thomas Smith Jr.	Dr. and Mrs. Philip Woolcott Jr.
Mr. and Mrs. Marc A. Files	The Kent Foundation	Mr. Mark E. Neithercut	Mr. and Mrs. Scott Smith	Mr. and Mrs. Floyd A. Wright

Our Membership and Supporters

Key Sponsor

\$300 - \$499

Linda and Steven Alexander
Mr. and Mrs. J.C. Anderson
Ann R Baruch
Bear Cove Marina, Inc.
Black Lake Association
Joseph and Paula Buckman
Mr. and Mrs. Scott Carbeck
Mr. and Mrs. Michael L. Carson
Mr. and Mrs. Steven Cheyne
Mr. and Mrs. Robert M. DeHaven
Jane and Cliff Denay
Jonathan and Wendy Dewys
Douglas Lake Improvement
Association
John and Janet Dunn
Earth Share of Michigan
East Burt Lake Association
East Mullett Lake Property
Owners Association
Judith Engelberg
Mr. Lloyd C. Fell
Geoffrey and Kathleen Fieger
Mrs. William A. Fisher II
Ms. Barbara J. Fisher
Mr. Joseph C. Fisher
Mr. and Mrs. Daniel P. French
Mr. and Mrs. Dean Ginther
Mr. and Mrs. James P. Gorter
Mr. and Mrs. Rusty Gowland
Barbara Shelton and John Hamman
Harbor Wear
Mr. and Mrs. Norm Harris
Kem and Mary Hawkins
Heritage Broadcasting Company
of Michigan
Barbara and Jerome Hoganson
Mr. and Mrs. William B. Holmes
Hugh and Joan Hoyt
Drs. Melanie S. Manary and
Charles Huebner
Mr. and Mrs. C. James Hyslop
Verne and Judy Istock

Kilwin's Quality Confections
Mr. and Mrs. Richard H. Kraft
Ms. Liz Krimendahl
Mr. William S. Laitner
L'Arbre Croche Club
Dr. Hal Lawrence
Mr. and Mrs. Richard A. Lent
Mr. and Mrs. Raoul LePage
Mr. and Mrs. James McMahon III
Mrs. Raenette McManus
Mr. and Mrs. Bo Miller
Marie and Bill Molnar
Cordelia W. Robinson and
Grant Morrow
Mr. Daniel T. Myers
Mr. Clas Nilstoft
Kevin J. O'Malley Family
Mr. William Osgood
Mr. and Mrs. William Owen
Mr. Mark W. Paddock
Perennial Garden Club
Mr. and Mrs. Michael Pettibone
Mr. and Mrs. Richard B. Pohl Jr.
Polly's Planting and Plucking
Ed and June Prein
Presque Isle Electric Co-op
Mary Reilly and Greg Putalik
Mr. and Mrs. Craig Rapin
Mr. and Mrs. J. David Reck
Kent and Mary Ann Reynolds
Mr. and Mrs. Jeffrey G. Ridings
Mr. and Mrs. Richard H. Sanderson
Mr. and Mrs. John Sant
Craig and Susan Sincock
Linda Stafford
Mr. and Mrs. Christopher J. Steffen
Susan and Gary Stewart
Mr. and Mrs. Robert D. Stillman
The Summers Foundation
University of Michigan Biological
Station
Mr. and Mrs. Michael VanLokeren
Mr. Roy A. Vincent
Dr. and Mrs. Thomas Volle
Mr. and Mrs. Brice Voran
Mr. and Mrs. Michael Wahl

Wentworth Builders
Ms. Jill Whelan
Van White
Michael and Kate Winnell
Dr. and Mrs. Brian Wittenberg
Mr. John G. Young

Friends

\$100 - \$299

4Front Credit Union
Mr. and Mrs. Anthony L. Abbattista
Dr. and Mrs. Gerald Aben
Thomas and Sheila Addison
Ms. Eliece Aiman
Mr. and Mrs. Bruce Alexander
Barb Mathes and Patrick Alguire
Dr. and Mrs. Daniel C. Allensworth
Darrell and Marty Amlin
Mr. and Mrs. Jim Anderson
Mr. Donald H. Anderson
Ms. Laurie Angell
William and Patricia Anton
Andrea Arends
Mr. Richard Arlen
Mrs. John M. Arnold
Les Arnold
Ms. Darcy J. Ashman
Jean L. Azar
Richard A. Bachhuber Jr.
Mr. Thomas C. Bailey
Dr. and Mrs. Jack D. Baker
Dann and Jeanne Balesky
Bank of Northern Michigan
Gary W. and Ann V. Barfknecht
Mr. and Mrs. Gerald R. Barnes
Gretchen Olsen and Steve Barney
Gerald and Kathy Batka
Frances Bauch
Dr. Arnold G. Bauer
Mr. and Mrs. Lowell B. Baughan
Mr. Walter P. Baughman III
Herwig and Vickie Baumann
Myra Baumes

Ms. Ruth Bay
Bay View Association
Ms. Bearcub Outfitters
Mr. and Mrs. Frank E. Beaver
Beaver Island Boat Company
Mr. and Mrs. Walter W. Becky II
Mr. Craig Bell
Lyn and John Bell
Mr. and Mrs. Norman J. Bennett
Mr. and Mrs. John S. Benson
David Hedrick and Mary Kay Berles
Dr. Mark D. Berman
Ms. Sara Berry
Dr. J G. Marc Bertrand
Dr. and Mrs. Charles E. Besaw
Kristy and Alan Beyer
Mr. and Mrs. Neil T. Bidwell
Patricia Bierlein
Mr. and Mrs. Michael Bierlein
Mr. and Mrs. George Biltz
Mr. and Mrs. William F. Binder
Mr. and Mrs. Jake Bishop
Mary Jo Larson and Jim Bizer
Mark and Jami Blaauw-Hara
Paul and Lisa Blanchard
Ron and Kathy Blank
Robert S. and Sara J. Blessing
Jan McNish and Alan Bliss
Mr. and Mrs. G. Peter Blom
Mr. and Mrs. Wayne Blomberg
Mr. and Mrs. Sigmund Blum
Mr. and Mrs. Greg Bodker
Ms. Kathy Bodzick
Mr. and Mrs. Manfred Bohlke
Dr. and Mrs. Bill Boike
Mrs. Lois A. Bolan
Catherine S. Bollinger
Jim and Marcia Bonahoom
Mr. and Mrs. Gordon B. Bonfield
Janet and Tim Borden
Mrs. Marie R. Bosca Baker
Lynn Bottum
Martha and Andrew Bowman
Boyne City Ace Hardware
Maureen Radke and Rick Brandi
Mr. and Mrs. Roland J. Brandt

William and Treva Breuch
Mr. and Mrs. Robert E. Britt
Mr. William R. Brooks
Mr. and Mrs. Richmond F. Brown
Mr. Willis E. Brown
Elaine and Bowden Brown
Mr. and Mrs. Michael G. Brunett
Mrs. Janet Buchanan
Dr. and Mrs. Art Budden
Mr. and Mrs. Noel Bufo
Lindy and Gary Buffington
Linda Burgert
Mr. Thomas J. Busch
Esther Buskirk
Mr. and Mrs. Joseph A. Butcko
Susanne B. Buxton
Mr. and Mrs. Raymond L. Campbell Jr.
Rae Chabot and Lawrence Campbell
Mrs. David P. Carlin
Sally and Phil Carlin
John and Nona Carr
Mr. Warren Carr
Mr. and Mrs. James C. Carroll
Frank and Eva Carswell
Mr. and Mrs. Jim Carter
Mr. and Mrs. Daniel J. CasaSanta
Mr. Albert D. Cash
Mr. and Mrs. Stephen Cassin
Charlevoix State Bank
John and Janice Cheney
Mr. and Mrs. John Cheney
Dr. and Mrs. James P. Chiavaras
John and Kristine Churchfield
Ms. Mary Jo Clark
Mr. Douglas G. Clark
Mr. and Mrs. Richard W. Clark
Mr. and Mrs. James R. Clarke
Jim and Patricia Clarke
Mr. and Mrs. Dale Claudepierre
Mr. and Mrs. Jack R. Clausnitzer
Michael and Mary Jane Clayton
Mr. and Mrs. Donald L. Cohen
Judge and Mrs. Avern Cohn
Mr. Elwin Coll
Mr. Brian Clay Collins
Mr. and Mrs. Dave Collins

If your name is not listed correctly in our annual report, please accept our apology and let us know about the error so we can update our records. Please call 231-347-1181. Thank you.

Our Membership and Supporters

If your name is not listed correctly in our annual report, please accept our apology and let us know about the error so we can update our records. Please call 231-347-1181. Thank you.

Mary Ida Compton
Mr. Gordon Converse
Ms. Wendy Conway
Mr. and Mrs. Bruce L. Cook
Mr. John Cook
Mr. and Mrs. Ernest S. Cornwell Jr.
Jim and Meg Costello
Murray and Julie Cotter
Bob Solt and Anne Couture
Morton and Mary Sue Cox Jr.
Dr. and Mrs. George A. Cripps
Mr. and Mrs. Robert M. Culbertson Jr.
Mr. and Mrs. Peter Cullman
Mr. and Mrs. Robert L. Currier Jr.
Ms. Diane Curtis
Mr. and Mrs. Roymo Dallavecchia Jr.
Dr. and Mrs. Allen D. Damschroder
Mr. and Mrs. Thomas F. Dansbury
Mr. and Mrs. Charles Datlen
Mr. Robert J. Dau
Mrs. Richard E. Dauch
Mr. William K. Davenport
Mr. and Mrs. David Deal
Maureen Dekruif
Mr. and Mrs. Paul Derwich
Dr. and Mrs. John Devor
Mr. and Mrs. William O. DeWitt Jr.
Mr. and Mrs. Richard E. Dexter
Mr. and Mrs. Ronald E. DeYoung
Steve and Judy Dobson
John and Sharon Dolton
Mr. and Mrs. John T. Donaldson Jr.
Mr. and Mrs. John Donnelly
Karen Strough and Michael Donnelly
Drs. James A. and Maureen Doull
Ms. Joanne F. Duff
Mr. Robert Dunn
Mr. and Mrs. Kent Dupont
Don and Kathy Duquette
Mr. Richard E. Durkin
Mr. and Mrs. Thomas Dworman
Mrs. Ruth Dyer
Mr. and Mrs. Ray A. Easton
Eaton Corporation
Katie Parker and Bert Ebbers
Mr. and Mrs. Morgan Edwards

Catherine and Kenneth Ehrenberger
Stephen H. and Nancy Eibling
Mr. and Mrs. Gordon B. Elliott
Bonnie and Jim Ellis
Gerald Ellman
Mrs. Joyce Elzerman
Emmet County Lakeshore Association
Mr. and Mrs. Douglas B. Enck
Mrs. John Erickson
Mr. and Mrs. Michael Esposito
Mr. and Mrs. Michael C. Etienne
Audrey and Clint Etienne
Mr. and Mrs. James Fabiano
Mr. and Mrs. John N. Failey
Mr. Thomas Fairbairn
Mr. and Mrs. Kevin Farrell
Michael and Kay Farrimond
Elizabeth and John Fergus-Jean
Fifth Third Bank
Mr. David Findlater
Mr. and Mrs. Michael Fischer
Ms. Nancy P. Fischer
Elise C. Billingsley and Michael Fleming
Flowers from Sky's the Limit
Ali Hill and Chris Ford
Mr. and Mrs. William D. Foren
Mr. and Mrs. Dan Francis
Dale and Bruce Frankel
Ms. Catherine T. Freebairn
Dr. and Mrs. Reed Freidinger
Twink Frey
Mr. and Mrs. Steven Frisbie
Mr. and Mrs. William Frost
Mr. and Mrs. Harry R. Fruehauf III
Mr. and Mrs. H. Richard Fruehauf Jr.
Dr. and Mrs. W. Randolph Frykberg
Martha Lancaster and Doug Fuller
Mr. and Mrs. Sam Gaither
Mr. and Mrs. Gardiner W. Garrard Jr.
Mr. Timothy A. Garry
Bill Webb and Jeanni Gaymer
Mr. Herbert Gedge
Mr. and Mrs. Otto K. Georgi Jr.
James and Lucy Gerlach
Mr. and Mrs. Douglas E. Gettel
Mr. and Mrs. Robert Gibson

Mr. Thor Gilbertson
Dr. and Mrs. Alan Gillespie
Scott and Tina Gleason
Dr. and Mrs. Charles J. Glueck
Mr. Michael Glusac
Mrs. Richard E. Goff
Goggle
Art and Marion Gold
Toni Felter and Ann Gorney
Mr. and Mrs. Roger Gowdy
Mr. and Mrs. James R. Grady
Mr. and Mrs. Ziba Graham Jr.
Graham Holdings Matching
Gifts Program
Uri and Patricia Grannis
Mr. and Mrs. Michael E. Grant
Great Lakes Lighthouse Keepers
Association
Betsy Green
Mr. and Mrs. Bruce D. Greer
Roy Griffiths Jr.
Mark and Sue Grimme
Mr. and Mrs. Robert C. Grove
Wil Cwikiel and Gail Gruenwald
Mr. Ronald Gurdak
Mr. and Mrs. Gary M. Gurizzian
Gurney's
Mr. and Mrs. Michael S. Guy
Mr. Mark Haddox
Marcia Haddox
Mr. and Mrs. James Hammond
Mrs. Robert Hampson
Mr. and Mrs. Wilbert Hamstra
Dr. and Mrs. Joseph Hance
Henry and Nancy Hanflik
Mr. and Mrs. William A. Hanley Jr.
Mr. Christopher L. Hanley
Dr. and Mrs. Steven V. Hansen
Mr. and Mrs. John Hardy
Mrs. Frank M. Harris
Mr. and Mrs. Robert Hartman
Mr. and Mrs. Gordon Hassing
Mr. and Mrs. John O. Hastings
Trudy Haussmann and Robert Haugan
Mr. and Mrs. James Haugh
Mr. and Mrs. Daniel T. Hayes

Dr. Claire and Mr. David Heidtke
Linda Heller
Mr. and Mrs. Michael Heroy
Dan and Karen Hess
Mr. and Mrs. Niles K. Hill
Mr. and Mrs. Scott Hill
Hill, Schroderus & Co.
Mr. John A. Hillenbrand II
Nancy Ann Hellman and
Glenn Hindbaugh
Mr. and Mrs. Robert Hingst
Nancy and Ed Hirschenberger
Art and Carol Hoadley
Mr. and Mrs. Donald C. Hodney
Mr. Roger Hodney
Mr. and Mrs. Paul Hoelderle Sr.
Mr. Dirk Hoffius
John and Barbara Hoffman
Mr. and Mrs. William Hofmann
Mr. and Mrs. Walter Holdan
Julie Fasone Holder and John
W. Holder
Mr. and Mrs. Sidney Holthaus
Mr. and Mrs. Stanley B. Holzhauer
Mrs. Kathleen Knox Hoogland
Mrs. Lewis E. Hopkins
Mr. and Mrs. Victor Horton
Mr. and Mrs. Frank Hoster
Pam and George Houk
Lt. Col. and Mrs. John B. Hubard
Mr. and Mrs. Bruce Hubble
Mr. and Mrs. Dillon R. Huder Jr.
Mr. and Mrs. Paul Huff
Mr. Nathaniel and Jake Huffman
Huffman Lake Property Owners
Association
Mr. Robert E. Humphrey
IBM Corporation
Indian River Marina
Mr. and Mrs. Thomas R. Irwin
Adrienne Osborne Ives
Mr. and Mrs. Kirk Jabara
Mr. and Mrs. Brian Jackman
Dr. and Mrs. Terry Jackson
Mac and Suzie Jacob
Mr. Edward C. Jacobi

Mr. and Mrs. Roger Jacobson
Mr. and Mrs. Henry Jallo
Mr. and Mrs. W. Joseph Jarecki
Mr. and Mrs. Dan Jarzabkowski
Ms. Lyn Jenks
Drs. Jerome D. and Sally Johnson
Linda Johnson
Mrs. Michael Johnson
Sylvia Johnson
Dr. and Mrs. John Paul Jones
Mr. and Mrs. V. Stewart Jose
Allison A. Townsend and Richard
E. Joseph
Mr. and Mrs. George Joseph
Mr. and Mrs. Richard E. Jositas
Mr. and Mrs. John F. Joslin
Mr. and Mrs. J. Terrill Judd
James and Gail Junod
Mr. and Mrs. George H. Jury
Just Give
Mr. Robert L. Kahn
The Kasamis Family
Mr. and Mrs. Terrence Keating
Mr. and Mrs. Robert E. Keedy
Mrs. M. David Keil
Joan Keller
Mr. and Mrs. Robert J. Kendell
Mr. J. Todd Kennedy
Tom and Julie Kennedy
Mr. and Mrs. Peter E. Kepic
William and Kathy Kern
Mr. and Mrs. William J. Kerscher III
Mr. and Mrs. Robert Kersey
Mr. and Mrs. Frank Kestler Sr.
Mr. and Mrs. David Kiefer
Mr. and Mrs. James A. Kight
Mr. and Mrs. Donald F. King Jr.
Mr. and Mrs. Robert J. Kingon
Mary Kinkle
Emily Meyerson and Harry Kitchen
Mr. and Mrs. Robert E. Klemmer
Mr. and Mrs. John C. Klepach
Mr. Donald L. Klopccic Sr.
Mr. and Mrs. Arnold G. Kluge
Mr. and Mrs. Christine N. Kneese
Mr. and Mrs. Tom Knox

Our Membership and Supporters

If your name is not listed correctly in our annual report, please accept our apology and let us know about the error so we can update our records. Please call 231-347-1181. Thank you.

Mr. and Mrs. Patrick Kociolek
Nancy Koehler
Jill Keefer and Mark Korkus
Korthase Flinn Insurance &
Financial Services
Mr. and Mrs. John Kowalczyk
Ms. Donna M. Krall
Ms. Martha Krimendahl
Mr. and Mrs. Elton E. Kruger
The Krums
Mrs. Gwendolyn Kuehn
Ms. Kathleen Kurtz
Russell and Suzanne LaBeau
Lake Louise Christian Community
Mr. Claude Lambert
Mr. and Mrs. Jim Larimer
Mr. and Mrs. James D. Lark
Allan and Cathy Larner
Mrs. Sheldon Laughlin
Dr. and Mrs. Christopher Lee
Jim and K.C. Leh
Dr. and Mrs. Jeff Leinicke
Tim and Robbi LeRoy
Robert and Margaret Levine
Shawn and Laura Lilley
Mr. and Mrs. Richard Lindberg
Mr. and Mrs. Ralph Lindgren
Mr. and Mrs. Wayne Lindstrom
Mr. and Mrs. Richard H. Lineback
Mr. and Mrs. Roy Link
Mr. Robert P. Linnenberg
John and Linda Linnenberg
Mr. and Mrs. William Little
Mr. and Mrs. James Little
Little Traverse Yacht Club
Gow Litzenburger
Long Lake Association Grand Traverse
Long Point Property Owners
Association
Catherine and John Loomis
Lower Shore Drive Property
Owners Association
Laura Lowrance
Mr. and Mrs. James R. Lozelle
Mr. and Mrs. Joseph E. Lunghamer Sr.
Mr. and Mrs. David Lurie

Mr. and Mrs. Peter M. Lyon
Mrs. Joseph Lyons
Mr. and Mrs. William R. MacKay
Mr. and Mrs. William D. MacPhee
Dr. and Mrs. Bruce Maguire
Mrs. Emma S. Makinen
Mr. and Mrs. Robert G. Maldegen
Mr. and Mrs. Terence S. Malone
Dr. and Mrs. Patrick M. Maloney
Mr. and Mrs. Larry Mann
Mr. and Mrs. Curtis Mann
Doug and Rachel Mantha
Dr. and Mrs. Kevin Markham
Mr. and Mrs. John W. Martin
Jamie Martin, Builder
Mr. and Mrs. Charles Marvin
Mr. and Mrs. Neil Marzella
John and Jennifer Mastenbrook
Mr. and Mrs. E. Curtis Matthews Jr.
Maureen Mayne
Ben and Lynn Mayne II
Tom and Carolyn McAnallen
Mr. Merrick F. McCarthy Jr.
Mr. George P. McDonnell
Mr. and Mrs. Dan McElroy
Mrs. John H. McFall
Mr. and Mrs. James C. McGill
Mr. John T. McKay
Mr. and Mrs. Ray K. McMullen
Dr. Richard J. McMurray
Dr. and Mrs. Mark McMurray
Ms. Diane R. McPharlin
Mrs. Anne Melvin
Mr. and Mrs. Kay R. Melvin
Mr. and Mrs. Paul Menke
Mr. and Mrs. Robert V. Messerly
Dr. and Mrs. Joshua Meyerson
Michigan Scientific Corporation
Phil and Peggy Millard
Dr. and Mrs. Michael J. Miller
Mr. and Mrs. Keith Miller
Mr. and Mrs. Victor J. Miller
Dan and Martha Mishler
Mr. and Mrs. Allen Moberly
Mr. and Mrs. Bradley D. Moffatt
Mr. and Mrs. Michael T. Monahan

Mr. and Mrs. David C. Monroe
Sheila T. Moore
Dr. and Mrs. Donald C. Moore
Dr. Julia Spalding and Mr.
Michael Moquin
Mrs. Carol A. Morris
Mr. and Mrs. Dennis Morse
Mr. and Mrs. Gregg A. Motter
Mr. and Mrs. Richard P. Mueller Jr.
Mr. and Mrs. David Muntz
Robert M. and Mildred L. Murdock
Mrs. Robert S. Murray
Loren and Paula J. Musilek
John C. Myers III
Thomas and Margaret Myers
Mr. and Mrs. Robert Nakoneczny
Mr. and Mrs. J. Anthony Naylor
Valerie B. Nelson
Mrs. Roy Nelson
Mr. and Mrs. Carl Nelson Jr.
Mr. and Mrs. William F. Newman
Mr. and Mrs. Gerald A. Nielsen
Ms. Irma K. Noel
Mr. and Mrs. Robert B. Noll
Mr. and Mrs. Thomas Noneman
Mr. and Mrs. William H. Norcross
Jeanie E. Norcross
Mr. and Mrs. Paul F. Nowak
Nub's Nob Ski Area
Mr. and Mrs. John Ochs
Renuka S. O'Connell
Dr. and Mrs. Gilbert M. O'Gawa
Michael and Katherine O'Rear
Charles and Jeffrey Otis
Mrs. Cynthia W. Ottaway
Dr. and Mrs. Douglas Otto
Mr. and Mrs. Norman C. Otto
Mr. and Mrs. Walter Owen
Mr. and Mrs. James J. Padilla
Mr. and Mrs. Leonard Page
Jim and Janet Parker
Mr. and Mrs. Richard M. Parker
Mr. and Mrs. John H. Parker
Mr. and Mrs. John Parker
Larry and Marnie Parrott
Mr. and Mrs. W. James Patterson

Mr. and Mrs. Dave Patterson
Mr. and Mrs. Christopher Payne
Larry and Sarah Peck
Dr. and Mrs. Owen Z. Perlman
Dr. and Mrs. Richard Persiani
Dr. and Mrs. Richard Persiani
Mr. B. Matthew Petcoff
Mr. and Mrs. Thomas T. Petzold
Mr. and Mrs. Dan Pfeiffer
Dr. and Mrs. Lawrence D. Piotrowski
Mrs. Ralph E. Piper
Mr. and Mrs. James H. Plagens
Frances Plawinski
Maud Granzow and Hank Plumer
Mr. and Mrs. Ken Polakowski
Ms. Lana Pollack
Mr. and Mrs. Mark Prendeville
Preservation Association of
Thayer Lake
Mr. and Mrs. Donald Priest
Ms. Lesley J. Pritchard
Ms. Elizabeth S. Proulx
Thomas and Kathleen Pustell
Mr. and Mrs. Mitch Quaine
Lauren Walsh and Steve Radecki
Kenneth Bloem and Royce Ragland
Dr. Dana L. Randall
Claire R. Rasmussen
Dr. and Mrs. John Rasmussen
Mr. and Mrs. Morris R. Rave
Raven Hill Discovery Center
Mr. and Mrs. Earl Raynal Jr.
Joann Condino and Gene Reck
Mr. and Mrs. John E. Regan
Ellen M. Strand and Dennis C. Regan
Mr. and Mrs. Borge Reimer
Mr. and Mrs. Neil Ressler
Dr. and Mrs. Art Rettig
Mr. John D. Rich
Dr. and Mrs. Tad J. Richards
Mr. and Mrs. James M. Richardson
Ms. Georgiana E. Richner
Nancy Rickard
Roast and Toast Cafe
Mr. Ross Roeder
Mr. John P. Rogers

John and Debbie Rohe
Martha Brownscombe and Jay Rosen
Mr. John S. Ross Jr.
Mrs. Walter L. Ross II
Mr. David J. Rossman
Mr. and Mrs. Dennis Roudi
Mrs. William G. Rupp
Randel E. Richner and Eric W. Russell
Mr. William Rutledge
Ryde Marine, Inc.
Mrs. Marvin L. Sackett
Ms. Nancy Salden
Mrs. Richard B. Salzer
Ms. Mary Jane Samberg
Mr. and Mrs. Robert W. Sandford Jr.
Mr. and Mrs. Michael Santi
Mr. and Mrs. Richard N. Sarns
David and Janet Scarrow
Mr. Robert Scarrow
Susan Scarrow
Mr. Michael Hamilton Schirmer
Mr. and Mrs. Mark Schirmer
Mr. and Mrs. Neill R. Schmeichel
Ms. Janet Schneider
Mr. and Mrs. Hans Schuler
Mrs. Evelyn M. Schulte
Dr. Michael Schulz
Ms. Suzanne Schulze
Mr. and Mrs. Erwin Schulze
Mr. and Mrs. William R. Schumann
Mr. and Mrs. Fred Schwier
Mr. and Mrs. Richard A. Scott
Mr. and Mrs. John R. Scott
Lee and Doris Scott
Mr. and Mrs. Ron Scriven
Mr. and Mrs. David C. Searles
Mr. and Mrs. Michael M. Sears
Misty Callies and William Secrest
Mr. Fred R. Secrest
Ms. Cheryl Sedestrom
Seedums Garden Club
Mr. and Mrs. Richard L. Segrist
Mr. Allen Segrist
Dr. and Ms. Corey J. Seitz
Mr. and Mrs. Stephen B. Selden
Mr. and Mrs. Robert B. Sellers

Our Membership and Supporters

If your name is not listed correctly in our annual report, please accept our apology and let us know about the error so we can update our records. Please call 231-347-1181. Thank you.

Gary and Cathy Semer
Mr. Milburn L. Shafer
Mr. and Mrs. James D. Shaheen
Mr. and Mrs. Kenneth W. Shaner
Mr. and Mrs. Sam Sharp
Dr. and Mrs. Gary Shaw
Mr. and Mrs. Dale Shaw
Timothy and Kathleen Shaw
Mr. and Mrs. Walter Shear III
Matt and Amy Sheldon
Dr. and Mrs. Jeffrey C. Shepard
Allyn Shepard
Mr. and Mrs. Robert Sherman
Dr. and Mrs. David Shneider
Mr. John R Shreves
Mr. Gary L. Sieb
Steve and Sue Sikkema
Silicon Valley Community Foundation
Hugh Melling and Denise Simon
Mr. and Mrs. Andy Siudara
Mr. and Mrs. Roy H. Sjoberg
Ms. Ellen Byerlein and Robert Sloan
Dr. and Mrs. Hugh Sloan Jr.
Mr. W. William Smith
Brice E. and Catherine Smith
Dr. and Mrs. Ronald D. Snyder
Linda M. Snyder
Mr. Howard Soldan II
Mr. and Mrs. David Southwell
Julie and Steve Spencer
Mrs. Michael D. Spreng
Mr. and Mrs. W. James Sprow
David Squibb
Paul and Marge St. Amour
Mr. and Mrs. Stephen Staich
Mr. and Mrs. Walter Stansbury
Mr. and Mrs. John Starkel
Kerry and Gregory Steck
Kerry and Gregory Steck
Mr. and Mrs. Floyd W. Steele
Mr. and Mrs. Gale Stephens
Mr. and Mrs. William A. Stetson
Mr. and Mrs. Mark Stevens
Sheila Stewart
Mr. and Mrs. John G. Stimpson
Bill and Jane Stone

Mr. and Mrs. Raymond M Stout
Stow Family Trust
Mrs. Richard Strickland
Rev. and Mrs. David T. Strong
Mr. and Mrs. William C. Stude Jr.
Mr. Rick Stuebing
Suzanna Stump
Mr. Theodore Styke
Mr. and Mrs. Hugh Sullivan
Mr. and Mrs. R. Stanley Sutton
Mr. and Mrs. Salomon Suwalsky
Mr. and Mrs. Kenneth Swadling
Sally and Bill Swanson
Mrs. Ann Swayze
Mr. and Mrs. Jerry R. Swift
Mark and Tammy Switow
Dr. and Mrs. John H. Tanton
Mr. and Mrs. Steele A. Taylor
Mrs. Place D. Tegland
Mr. and Mrs. Ralph E. Thayer
The Edward and Elyse Rogers
Family Foundation
Dr. and Mrs. Eugene Thompson
Mr. and Mrs. Philip Thornton
Dr. and Mrs. Joseph Thorpe
Three Lakes Association
TMF Limited Partnership
Mr. and Mrs. William E. Tomkinson
Mr. and Mrs. Steve Toth Jr.
Trailsend Bay Property Association
Mr. and Mrs. Peter Trantow
Dennis and Barb Travis
Mrs. David Treglown
Mr. and Mrs. Donald Trout
Mr. and Mrs. John Truckey
Mr. and Mrs. Jerry Trudell
Mr. William Twiddy
Twin Lakes Association
Mrs. H. Lansing Vail Jr.
Mr. and Mrs. Jerry Valka
Mr. and Mrs. Robert Vallee
Mr. and Mrs. William Valley
Mrs. William K. Van Allen
Kay and Kent Van Allen
Van Dam Custom Boats
Mr. and Mrs. Henry J. Van Dusen III

Susan and Gordon Van Wieren
Mr. and Mrs. Julian P. Van Winkle
Dr. and Mrs. Peter Vance
Dr. and Mrs. Ronald VandenBrink
Mr. and Mrs. William D. VanEvery
John and Liz Verhoeven
Dr. and Mrs. Thomas Vyerser
Mr. and Mrs. Ed Wagar
Mrs. Millicent G. Wallin
Bob and Lina Wallin
Walloon Lake Trust and Conservancy
Mr. and Mrs Jim Walter
Mr. and Mrs. John Warzecha
Mr. and Mrs. Roland J. Watts
Mrs. Elmira Weaver
Mr. and Mrs. Richard Weaver
Mr. and Mrs. R. Christopher Weber
Mr. and Mrs. John H. Webster
Dr. and Mr. Webster
Mr. and Mrs. Thomas P. Weinland
Mr. Edward T. Welcer
Mr. and Mrs. Philip R. Welch
Jeff and Candice Wendling
Wequetonsing Golf Club
Hilma and Elmer Whipple
Dr. and Mrs. A. Randle White
Mr. and Mrs. Michael P. Whitehead
Mr. and Mrs. Robert Whitesel
Mr. and Mrs. Larry Wiethorn
Dr. and Mrs. Timothy R. Wilcox
Wildtype Design, Native Plants
& Seeds
Mr. and Mrs. John Wilhelm
Dr. and Mrs. Harold J. Willens
Mr. and Mrs. Samuel H. Williamson
Mr. and Mrs. Gordon Wilson
Mr. and Mrs. James C. Wilson
Wineguys Restaurant Group
Mrs. James W. Wingate Sr.
Ms. Suzanne Wingate
Jennifer and Todd C. Winnell
Mr. and Mrs. John W. Wolf
Mr. and Mrs. Larry Wolski
Mrs. Stuart Wood
Mr. and Mrs. James Woodward Jr.
Warren and Linda Woolcott

Mr. and Mrs. William J. Wottowa
Stephen and Kelly Wright
Col. Ret. and Mrs. William A. Wyman
Mr. and Mrs. Boris Yakima
Veronica Yankoviak
Dr. Anna and Mr. John Young
Mr. and Mrs. Michael D. Young Sr.
Dr. and Mrs. Louis R. Zako
Mr. and Mrs. John Zapalowski
Mrs. Eleanor J. Zent
Mr. and Mrs. Robert L. Zielsdorf
Mr. and Mrs. Carl Zimmer
Mr. and Mrs. Scott Zimmerman

Supporters

\$50 - \$99

Dr. and Mrs. Thomas V. Abowd
Mr. and Mrs. Dwain Abramowski
Ms. Linda Adams
Mr. and Mrs. Frederick G. Ager
Mr. and Mrs. Patrick Ainslie
Mr. and Mrs. Danny R. Albert
Alden State Bank
Ms. Catherine Alfred
Mr. and Mrs. William Allen
Alumni Association of University
of Michigan
Amazon Smile Foundation
Rick and Sharon Anderson
Ms. Victoria L. Anderson
Mr. and Mrs. Barry Andrews
Mr. and Mrs. Chris Appleby
Mr. and Mrs. Lawrence Arnold
Mr. Robert Ashley
Dr. Catherine M. and Mr. Charles Baase
Mr. and Mrs. Mark B. Babich
Roger and Carole Baer
Major Dale L. Baird, USMC (Ret)
Dr. and Mrs. Steven J. Baker
Mr. and Mrs. Roger Baldwin
Mr. and Mrs. David J. Barrett
Deborah Durfee Barron
Mr. and Mrs. James R. Bartlett

Ms. Vivian Bates
Bayside Roofing, Inc.
Mrs. Hutch Bearce
Beaver Island Association
Drs. Margaret Brazones and
Howard Beck
Mr. and Mrs. Fred Becker
Carol Beebe
Mr. and Mrs. John S. Beechler
Tom and Marilyn Beerman
Ms. Ruth S. Bennett
Mr. Ronald Berg
Ralph and Marcia Bergemann
Howard and Roberta Bergman
Dr. Alan Berlin
Mr. Erwin P. Bettinghaus
Mr. and Mrs. John W. Betts
Mr. Ed Bezilla
Mr. and Mrs. Clifford D. Biddick
Steve and Kathy Biggs
Mr. Brendan Billingsley
Kyle Billingsley
Mr. and Mrs. Garfield Blight
Mr. Robert G. Bluhm Jr.
Dr. and Mrs. Herman Boatin Jr.
Mr. Doug Boehmer
Larry and Joanne Boerman
Mr. and Mrs. Joseph Bommarito
Mr. and Mrs. James Bone
Mrs. Robert M. Book
Mr. and Mrs. William V. Borland
Rud and Mary Ellen Boucher
Mr. and Mrs. Richard J. Bowman
Mrs. Jeanne Boyd
Mr. and Mrs. James C. Boylan
John D. and Janet Boyles
Ms. M. Carol Branch
Mr. and Mrs. William H. Bray
Charles Hoven and Margaret D. Bray
Dr. and Mrs. James I. Breckenfeld
Tom and Polly Bredt
Mr. and Mrs. Daniel Brennan
Douglas and Suzanne Brenton
Mr. and Mrs. William A. Briggs
Mr. and Mrs. Daniel Brockman
Tom Brown and Pepper Bromelmeier

Our Membership and Supporters

If your name is not listed correctly in our annual report, please accept our apology and let us know about the error so we can update our records. Please call 231-347-1181. Thank you.

Mr. and Mrs. Charles D. L. Brown
 Pamela O'Malley and Bruce Brown
 Judith Reddick and Ronald Brown
 John and Barbara Burgdorfer
 Ms. Sandra K. Burtch
 Mr. and Mrs. Michael Butcher
 Mr. and Mrs. Thomas Cadwalader Jr.
 Mr. and Mrs. Robert Cain
 Ms. Joan Caldwell
 Mr. and Mrs. Brian Callaghan
 Mr. and Mrs. Howard Canada
 Mr. and Mrs. James Cartwright
 Mr. and Mrs. Stuart Case
 Mr. and Mrs. J. Stewart Caulfield
 Mrs. Jan Cavanaugh
 Mr. and Mrs. Brian D. Champion
 Thomas and Deborah Chapman
 Dr. and Mrs. Leonard H Charchut
 Char-Em Appraisal
 Cheboygan Long Lake Area Association
 Judi and Pete Chimner
 Anne Morrow and Roger Chope
 Mr. and Mrs. Joseph A. Chrzanowski
 Mr. and Mrs. John N. Chuchman
 Judge and Mrs. James P. Churchill
 Mr. and Mrs. Jon Clapp
 Randal D. and Susan Page Clara
 Mr. and Mrs. Kevin Clarke
 Ms. Marlene Clemenshaw
 Mrs. Michael Cobb
 Richard and Marilyn Cobb
 Mr. and Mrs. David Cole
 Mr. and Mrs. John S. Coleman
 Columbus Beach Club
 Mr. and Mrs. Robert E. Combs
 Susan and Hugh Conklin
 Mr. and Mrs. Michael P. Conti
 Mr. Larry Cooley
 Greg and Janice Cooper
 Mr. and Mrs. Richard E. Copeland
 Mrs. Charlotte W. Corbett
 Gerald and Beth Coulter
 Mary Cousino
 Dr. and Mrs. Clifford Cox
 Mary Lou Cox
 Kevin Cronk

Mr. and Mrs. William J. Crothers
 Mrs. Sally Cudlip
 Mr. and Mrs. David M. Culver
 Richard L. and Catherine E. Cunningham
 Nancy J. Cunningham
 Mr. Arthur W. Curtis III
 Mr. and Mrs. Owen Curtis
 Ms. Kay Daly
 Mr. and Mrs. David L. Darnell
 Mr. Thomas B. Darnton
 David Skornia Contracting
 Mr. and Mrs. John R. Davies
 Mrs. Adriane De Windt
 Ms. JoAnn C. Dekleva
 Mr. and Mrs. Dale Dekraker
 Mrs. Hyrthol L. DeMeritt
 Jeffrey Taylor and Patricia Dennis
 Mr. and Mrs. Terence B. Desmond
 Mr. and Mrs. Archibald Dettman
 Ms. Amy T. Dickinson
 Richard A. and Janette F. Dilley
 Mr. John D. DiMartino
 Mr. and Mrs. Daniel DiPietro
 David and Elizabeth Domann
 Ms. Jean Z. Donaldson
 Mr. and Mrs. Gerald A. Donnelly
 Mr. and Mrs. A. Samuel Dorchen
 Marilyn and John Doty
 Douglas Lake Association - Johannesburg
 Mr. Bruce G. Douglass
 Mr. and Mrs. Douglas Drake
 Dr. and Mrs. John H. Duiven
 Teddis L. Dumbauld
 Bruce and Nancy Dunn
 Mrs. Lynn R. Duryea
 David and Anabel Dwyer
 East Jordan Garden Club
 Mr. Donald E. Eaton
 Mr. and Mrs. Glenn Eccleston
 Mr. and Mrs. John D. Edick
 Ms. Eugenia Edmiston
 Mr. and Mrs. Robert L. Edwards
 Mary Jordan and Ted Ehler
 Mr. and Mrs. Richard P. Eide Jr.

Elk Rapids Hydroelectric Power LLC
 Mr. Michael S. Elledge
 Mr. and Mrs. Stephen J. Enck
 Barbara Enders
 Mr. and Mrs. Mackenzie K. Endo
 David Spitzli and Maureen Engle
 Mr. and Mrs. Walter Enterline
 Mr. and Mrs. William Eppel
 Mr. and Mrs. James Erhart
 Daniel P. and Ann R. Ernst
 Ms. Helen G. Evenson
 Mr. and Mrs. J. M. Ewing
 Barry and Ellen Ewing
 Mr. and Mrs. John Faett III
 Mr. and Mrs. Charles R. Fain
 Gary Fedus
 Roger and Kathleen Fendt
 Mr. and Mrs. David Fenwick
 Mr. and Mrs. James Fergus
 Mr. and Mrs. John A. Ferrari
 Audrey Fick
 Mrs. Linda N. Findley
 Kerri Finlayson
 Mr. Christopher Finley
 Ms. Mary L. Fischer
 Mr. and Mrs. William P. Fisher
 Mrs. William B. Fitzgerald
 Mr. and Mrs. Robert L. Fleury
 Mr. and Mrs. William Fleury
 Mr. and Mrs. James J. Flom Jr.
 Mr. and Mrs. Ted Flynn
 Mary and Jerry Foote
 Mr. and Mrs. Charles Forsberg
 Mrs. Marshall Forsberg
 Mr. and Mrs. Robert B. Foster
 Mr. and Mrs. John Fowler
 Ms. Elke J. Frankenberg
 Mr. and Mrs. W. Kenneth Freeman
 Mr. and Mrs. Arthur E. Frentz
 Mr. John Friedly
 Mary Anne Rivers and Gordon Friesse
 Mr. . William Furtaw
 Dr. and Mrs. John E. Gannon
 Mrs. Virginia E. Gardner
 Carol Andreae and James Garland
 Mr. and Mrs. James Gartin

GE Foundation
 Tom Renkes and Christine Gebhard
 Richard and Holly Gedert
 Ms. Sue Gehrke
 Rosemary F. Geist
 Mr. and Mrs. Wallace Gemignani
 Bradley and Sherry Gerlach
 Ms. Betty Germain
 Mr. and Mrs. Robert L. Getts
 Mr. Howard Gilbertson
 Patricia A. Gildner
 Mr. and Mrs. Joseph R. Gilmore
 Mrs. Dale Gloer
 Kathleen Glynn
 Mr. and Mrs. Paul K. Godwin Jr.
 Tim and Lynne Goodwin
 Debra Bradshaw and Robert A. Gordon
 Ms. Elaine W. Gordon
 Em and Bob Green
 Green Lake and Duck Lake Assn
 Drs.. Sheila Gelman and David Greenblatt
 Ms. Gretchen Gregory
 Ms. Ann Petroskey and Ms. Betty Grover
 Mr. Tom Gschwind
 Mr. and Mrs. Donald Gschwind
 Mr. David Guanci
 Dr. Gordon Guyer
 Mr. and Mrs. George Haddad
 Mr. and Mrs. Ted Haddad
 Haggard's Inc.
 Mr. and Mrs. Michael Haley
 Rev. Ted Halsted
 Mr. and Mrs. Ted Hammond III
 Walter and Brigid Hansen
 The Michael Harrington Family
 Dr. Marilyn E Harris
 Nancy Harrison
 Mr. and Mrs. Charles R. Hartman III
 Mr. and Mrs. William C. Hartwig
 James W. and Jessica Haslock
 Mr. and Mrs. Thomas Hassett
 Mrs. Madge L. Hauser
 Mr. and Mrs. David Hauser

Mr. and Mrs. Carl W. Hawkins
 Dr. and Mrs. Kent R. Hay
 Mr. James W. Hayes
 William and Judith Heil
 Terri L. Hemmelgarn
 Mrs. Joseph P. Henley
 Mr. and Mrs. Brad Hersey
 Chick and Cyndy Hershberger
 Mr. and Mrs. William Hewett
 Mr. and Mrs. Wallace Hibbard
 Mr. Alan B. Hickman
 Higher Grounds Trading Co
 Mr. and Mrs. G. P. Johnson Hightower
 Bruce Davis and Heidi Hill
 Mr. and Mrs. Dennis Hilligan
 Mrs. Wanda Hilner
 Jane Hire
 Perry Irish and Rich Hodgson
 Mr. and Mrs. Eugene Hodulik
 Dr. and Mrs. Gene O. Hoerr
 Mr. Richard Hoffman
 Mr. and Mrs. Thomas Hogan
 Mrs. William Hoglund
 Mr. Norvin Holm
 Mr. and Mrs. David Hoster II
 Mr. and Mrs. Thomas C. Hoster
 Mr. and Mrs. John Houser
 Mr. and Mrs. Wesley Hovey
 Mr. and Mrs. James C. Howell
 Mrs. Gretchen Hoyt
 David R. and Patricia L. Hubbard
 Mrs. Walter G. Huber
 Mr. and Mrs. Stephen Huffman
 Mr. Robert Craig Hupp
 Mr. and Mrs. Scott Hymas
 Mr. Charles F. Iffland
 Intermediate Lake Association
 Mr. and Mrs. Gregory P Jackson
 Kim Kolb and Thomas Jaenicke
 William P. Jamnick
 Mary Louise Janes
 Mr. and Mrs. Paul Janness
 Amy and Christian Janssens
 Cynthia Jean
 Mr. and Mrs. Dennis Jesiek
 Judge and Mrs. Charles Johnson

Our Membership and Supporters

If your name is not listed correctly in our annual report, please accept our apology and let us know about the error so we can update our records. Please call 231-347-1181. Thank you.

Mr. and Mrs. Broc Johnson
Mrs. Max Johnson Jr.
Mr. and Mrs. David R. Johnson
Mr. and Mrs. Terry L. Johnston
Mr. and Mrs. Roy M. Johnston Jr.
Jim and Gail Juday
Mr. John Kafer
Kathy Karenko
Mr. and Mrs. John Kaser
Mr. and Mrs. Kevin Keane
Mr. and Mrs. Alonzo P. Keathley
Dr. Greg Keith
Mrs. Lawrence D. Kellogg Jr.
Patrick and Sue Kelly
Mr. and Mrs. John T. Kelly III
William and Kirsten Kelly
Mr. and Mrs. Roger Kemper
Robert and Sheryl Kendrick
Lynn K. Kerber
Ronald and Bonnie Kershner
Mr. and Mrs. Brad Kessel
Mr. and Mrs. Joseph F. Ketchum
Marjorie Ziefert and Chuck Kieffer
Mr. and Mrs. James P. King
Mrs. Connie M. Kiser
Mr. and Mrs. Frederick Klippert
Mr. and Mrs. Lee Knapp
Fred and Joyce Koehler
Steve and Kathleen Kopitz
Dr. and Mrs. J. Daniel Kutt
Lake Shore Beach Association
of Topinabee
Mr. and Mrs. Mike Lambert
Mr. Gordon F. Laramie III
Latitude 45 Bicycles and Fitness
and Ride 45 Boards/BM
Mr. Frederick A. Lavery Jr.
Mr. and Mrs. John E. Lawrence
Mr. and Mrs. Peter F. Lawson
Harold and Lois Leach
Ronald Wallin and Joann P. Leal
Dr. Timothy Lee
Mr. and Mrs. Robert C. Leland Jr.
Ms. Mary B. Letts
Mr. and Mrs. Martin Letts
Danute M. Leveckis

Ms. Mary C. Lewis
Mr. and Mrs. Donald C. Leyrer
Ms. Mary D. Liebner
Fred and Kathy Liederbach
Ms. Patricia J. Liesik
Lincoln Financial Foundation, Inc.
Walt and Jean Lindsay
Dr. Daniel Linnenberg
Mr. and Mrs. Robert Litzer
Mr. Robert Logee
Mr. and Mrs. Edward A. Loniewski
Evelyn Lott
Mrs. Jane Lund
Mr. and Mrs. William F. Luxton
Mr. and Mrs. James R. Mabee
Mr. and Mrs. Guy O. Mabry
Mr. and Mrs. Louis J. Mahoney
Dr. Kimberley Maise
Mr. Gary C. Malone
Dr. and Mrs. Michael L. Manchester
Ms. Janet M. Mancinelli
Mrs. Judith E. Manturuk
Ms. Teresa Marcy
Ron and Clara Marks
Mr. and Mrs. H. Clifford Martin Jr.
Mr. and Mrs. Dudley W. Marvin
Mr. and Mrs. Alex J. Mason
Mr. and Mrs. William T. Mate
Dr. and Mrs. Joseph Matievich
Lisa Marie Maxson
Dr. and Mrs. Robert G. May
Mary Ann Mc Cullough
Mr. Jeremy McBain
Mr. and Mrs. Richard S. McCaghy
Mike and Stephanie McDaniel
Janice McDiarmid
Ms. Jean McDonald
Mr. and Mrs. James F. McDonough
Mr. and Mrs. William J. McElroy
Mr. Charles L. McFarland
Mr. and Mrs. Charles E. McKinley
Mr. and Mrs. James K. McKinnon
Mr. and Mrs. John McKnight
Mr. and Mrs. Robert W. McLean
Mr. and Mrs. William McLean
McLean & Eakin Booksellers

Mr. and Mrs. John R. McNaughton III
Ms. Barbara Menear
Joseph and Catherine Merritt
Mrs. Connie Messner
Peggy Midener
Mr. and Mrs. Dennis Mikus
Dr. and Mrs. David M. Miller
Mr. and Mrs. Randolph J. Miller
Mr. and Mrs. William S. Mitchell
Marlin and Polly Corbin Mittag
Scott Monthei
Ron and Linda Moore
Ms. Diane Morand
Mr. and Mrs. Ayers Morison Jr.
Mr. Tim Morris
Mr. and Mrs. Thomas O. Morrow
Mr. and Mrs. William A. Morrow
Mr. and Mrs. Sidney Moss
Mr. and Mrs. James E. Mottern
Muller Electric, Inc.
Mr. and Mrs. Thomas F. Murasky
Mr. Edson W. Murray
Mrs. Audrey Murtland
Music Makers of Petoskey, Inc.
Ms. Rebecca Nadel
Mr. Arthur R. Nash Jr.
Mr. and Mrs. Thomas W. Neelands
Sherry Nelson
Dr. and Mrs. Phil Nelson
Mr. and Mrs. Daniel J. Nemes
Mr. and Mrs. Joseph F. Nerone
Ms. Barbara A. Netter
Mr. and Mrs. Phillip B. Newman III
Mr. and Mrs. James Kelley Newton
Mr. and Mrs. John C. Nichols II
Mr. and Mrs. Robert F. Nickodemus
Mr. and Mrs. James M. Nield
Rebecca Norris
Northern Michigan Master Gardener
Association
George and Susan Notarianni
Ms. Patty Nowak
Mr. James W. Ochs
Mr. and Mrs. Thomas C. Oelke
Mr. and Mrs. John H. Ogden
Mr. and Mrs. Donald K. Osborne

Dr. and Mrs. James J. Osetek
Mr. and Mrs. Verne H. Osterlund
Mr. William Ostler
Mr. and Mrs. Donald C. Owen
Maureen Owens
Dr. and Mrs. Gerard Ozanne
Mr. and Mrs. James Paczesny
Mr. and Mrs. Lloyd S. Paridee
Mrs. Gerald L. Park
Ed and Gerri Parks
Mr. and Mrs. Lee H. Parrish
Mr. and Mrs. Robert R. Pattengale
Dr. and Mrs. Richard D. Patterson Sr.
Mrs. Margretta Patterson-Kauffman
Laura Mate and Brent Pattison
Butch and Shelley Paulsen
John and Lorayn Perkins
Karyn and Tim Perry
Mr. and Mrs. Charles Pethtel
Ruth S. Petit
Mr. and Mrs. Charles A. Pettke
Mr. and Mrs. Henry Pfeifer
Mr. Henry Pfeifle Jr.
Mr. and Mrs. Darryl Pfister
Mrs. Dennis Pfleger
Ms. Sarah Philippon
Pickerel Lake Association - Botsford
Mr. and Mrs. Joseph J. Pietrangeli
Mr. Richard B. Platt
Mr. and Mrs. Edward Plawecki Jr.
Mr. Eugene T. Plite
Mr. and Mrs. Louis G. Pohl
Mr. and Mrs. Phil Porter
Dr. and Mrs. Jeff Porter
Mr. and Mrs. Michael Posner
Preston Feather Building Center
Terri Hodge and Judy Probert
Ira and Ann Purchis
Mr. and Mrs. Robert J. Pursel Jr.
Susan E. Pyke
Dr. and Mrs. Joseph Pysh
Mr. and Mrs. James M. Radabaugh
James and Beverly Ragland
Ms. Carol Raitzer
Mr. and Mrs. Henry M. Ramseur
Dr. Raymond Reck

Ms. Christine G. Redman
Ms. Marilyn L. Reed
Mr. and Mrs. Steve Reh
Susan McCraven and Robert Reider
Mr. and Mrs. George J. Reindel III
Mr. and Mrs. Jerry Reis
Mr. and Mrs. Conrad S. Reiter
Mr. and Mrs. William A. Renis
Mrs. Barbara E. Renton
Rex Terrace Association
Mr. and Mrs. Gilbert Richards
Drs. Robert and Nancy Rifenburg
Mr. Stephen Riley
Donald Molosky and Elizabeth Roach
Mrs. Joseph C. Robert
Richard and Brenda Roberts Sr.
Ms. Irene Roberts
Ms. Kathleen Robinson
Rockworks, Inc.
Barb and Carl Roehling
Mr. and Mrs. Adrian Rogier
Jacqueline Stubner and Bryan Rogne
Mr. and Mrs. Henry S. Ross
Ms. Marlene Ross
Patricia and Paul Roush
Audrey Rowe
Eric P. and Carol P. Roy
Sandra E. Ruffini
Ms. Phyllis M. Russell
Hugh and Nancy Ryan
Mr. and Mrs. Thomas Ryan
Penny Sage
Andrew and Jo Sahara
Mr. and Mrs. Gary Salowich
Mr. and Mrs. Don Sargent
Dr. and Mrs. Thomas Sarosi
Ms. Andrea J. Sarto
Mrs. Jean E. Sayre
Vicky Warner and Gary J. Schafer
Mr. and Mrs. Rex Schlaybaugh Jr.
Mr. and Mrs. George W. Schoene
Dr. Franziska Schoenfeld
Dr. and Mrs. Robert D. Schrock Jr.
Jack and Marsha Schulman
Mr. Donald J. Schwalm
Mr. and Mrs. Max W. Schwandt

Our Membership and Supporters

If your name is not listed correctly in our annual report, please accept our apology and let us know about the error so we can update our records. Please call 231-347-1181. Thank you.

Mr. and Mrs. James J. Scott
Mr. and Mrs. Stephen Secrest
Mr. and Mrs. Clifford J. Seeger
Mr. and Mrs. Paul J. Seehaver
Mr. and Mrs. Tom Seltenright
Neil and Ingrid Sendelbach
Mrs. Margaret Lie Seroppian
Chris and Michele Shafer
Mrs. Louise M. Shaheen
Mr. Larry Shepard
Dr. and Mrs. William M. Sherk
Mr. and Mrs. Andrew R. Sherwood
Nancy Monsour and Michael Shubeck
Mr. and Mrs. Sherman C. Shultz
Mrs. Betty M. Sims
Mr. Peter D. Sims
Mr. and Mrs. Dan Slanec
Mr. and Mrs. Russell L. Smith
Ms. Sara E. Smith
Jay and Mary Smith
Dr. and Mrs. Stanley R. Smith
Mr. and Mrs. Mark S. Smith
Carlin Smith
Margaret Child Smith and
David L. Smith
Mr. Jacob L. Snider
George and JoAnne Snyder
Mr. and Mrs. Stephen Snyder
Mrs. Robert Songe
Don and Gloria Sowle
Katherine Yih and John D. Spence Jr.
Mr. and Mrs. Gerard Spencer
Dr. and Mrs. Doug Springborn
Mr. and Mrs. Donald Spurr
Nancy Squires
Mr. and Mrs. Larry Sroka
Mr. and Mrs. Joseph A. Stafford
Gloria Stapp
Mr. and Mrs. Neil A. Starkey
Mr. Kenyon Stebbins
Scott and Christine Steensma
Janice Stephens
Sherri Stephens
Mrs. Deborah Stephens
Jane Diller and John G. Stevens

Mr. and Mrs. William E. Stewart
Mr. and Mrs. Leigh A. Stocking Jr.
Mr. and Mrs. David Stone
Mr. Richard Stone
Mr. and Mrs. Gary Street
Mr. and Mrs. Ed Strzelinski
Mr. and Mrs. R. Michael Supernault
Mr. Jerry F. Sura
Mr. Timothy V. Swanson
Mr. and Mrs. Ronald L. Sweers
Ms. Nancy Ann Swift
Mr. and Mrs. Royal J. Synwolt
Kristy Szczesny
Dr. Ward M. Taylor
Taylor Rental Center
Mr. David Templin
Mr. and Mrs. Richard W. Terrell
Mr. Alan Terry
Mr. and Mrs. Thomas M. Teske
Ron and Jane Theobald
Mr. and Mrs. Robert F. Thomas
Dave and Ruth Thompson
Deane and Deborah Tierney
Mr. and Mrs. James E. Tollar
Mrs. Martha Treiber
Christine Tremper
Mr. and Mrs. Bill Tripp
Mr. Edward Trowbridge Jr.
Jean Holther and Scott Trowbridge
Mr. Frederick J. Trudo
Martin and Suzanne Tuck
Mr. and Mrs. Paul Tuerck
Mr. Thomas L. Turcott
Mr. and Mrs. Michael L. Turnbull
Margaret Tvedten
Mr. Donald A. Van Suilichem
Mr. and Mrs. Douglas Vance
Ms. Roberta L. VanderBreggen
Dr. and Mrs. Frederik S. VanReeseema
Mrs. Paul J. Varga
Ms. Vicki N. Vassalo
Norman Veliquette
Carole Vial
Village Graphics, Inc.
Marcia Waara

Mrs. Robert Waldie
Charlotte and Joe Walker
Mr. and Mrs. Steven K Wang
Mr. and Mrs. John P. Ward
Mr. and Mrs. Richard J. Warns
Dr. and Mrs. R. Randolph Weast
Mr. John R. Webber
Ms. Pat Weber
Dr. and Mrs. Paul A. Weber
Dr. and Mrs. James Weber
Mr. and Mrs. Donald Weber
Mr. and Mrs. James R. Weeks Jr.
Mrs. Dolores Wehrenberg
Mr. and Mrs. William H. Weltyk
Mr. and Mrs. Stan Wencley
Wetland Training Institute, Inc.
Mr. and Mrs. Edson A. Whipple
Mr. and Mrs. Dennis V. Whitehead
Dr. Dorothy Whitmer
Mr. and Mrs. Ronald Whitmore
Mr. and Mrs. John W. Wickett
Dan and Joelle Wilcox
Jim and Ann Wilderom
Dr. Stephen P. Wilensky
Margaret Daniels and Rick A. Wiles
Mrs. Gussie Williams
Mr. and Mrs. Patrick R. Willnow
Mr. David R. Wilson
Mr. Steven B. Wilson
Joan Wilson
Mr. and Mrs. Steve Winchell
Carl and Jamie Winters
Mr. James T. Witherspoon
Mr. and Mrs. Paul Witting
Ms. Anne Woudenberg
Mr. and Mrs. Robert Woudstra
Mr. and Mrs. Stanley Yoder
Mr. Alan Young
Dr. Beverly Zelt
Virginia Zimmerman
Mr. and Mrs. Ronald L. Zimmerman
Mr. and Mrs. Douglas Zoerhoff
Mr. and Mrs. George Zuidema

Subscriber \$35 - \$49

Mr. and Mrs. James Adams
Mrs. Raechel Alberts
Mr. and Mrs. Lee Albrecht
Maribeth Foltz and Peter Allegrina
Mr. and Mrs. Richard E. Allen
Mary L. Johnson and Ken Allen
Mr. and Mrs. Alvin J. Amschler
Mr. and Mrs. Kurt Anderson
Ms. Elsa-Britt Andersson
Andrew Kan Travel Service, Inc.
Mr. and Mrs. C.G. Appleby
Sandra J. Arnold
Mr. and Mrs. Rod Arvin
Ms. Carol M. Ash
Ms. Susan Aspinall
Chuck and Lilo Atkinson
Sharon and Peter Bacon
Dr. and Mrs. Edward Bahr
Mr. and Mrs. John J. Baldwin
Julia Bandfield
Mrs. Evelyn Bare
Dr. and Mrs. Dale Bauer
Mr. and Mrs. Mark A. Baun
Mr. and Mrs. Roger E. Beaverson
Mr. and Mrs. Ronald Beitel
Mr. and Mrs. David Bellingham
Rose Bemben
Mr. and Mrs. Robert Bence
Mr. and Mrs. Steven Biewer
Mr. and Mrs. Howard E. Biglin
Mr. and Mrs. John C. Biliti
Dr. and Mrs. Leo J. Bingley Jr.
Ms. Sue Bissell
Gary and Gail Blaskowski
Patricia Bloom
Mr. and Mrs. Ed Boan
Mr. and Mrs. John R. Bodt
Mr. and Mrs. L.R. Boerma
Eric Borcharding
Ms. Donna M. Boris
Mr. and Mrs. William E. Boruta
Mr. and Mrs. Bill Boussum

Mr. and Mrs. Douglas Bouwense
Mr. John B. Bowers
Mr. and Mrs. W. James Bowers
James and Carmela Bownes
Mr. and Mrs. Ron Boynton
Mr. and Mrs. Juris Brants
Doug and Janet Brautigam
Mr. and Mrs. Donald Breed
Gerald and Karol Breen
Mr. Thomas S. Brinkman Sr.
Mr. and Mrs. David A. Brockman
Dr. and Mrs. Donald K. Bryan
Ms. Barbara Bryan Bergin
Mr. and Mrs. John Bubak
Mr. and Mrs. James Burdick
Mr. Terry Burge
Mr. and Mrs. Ray W. Burgess
Dr. Judee Burgoon
Ms. Nancy Burk
Mr. and Mrs. James Burke
Mr. and Mrs. Thomas H. Burks
Ms. Ann Joslyn Burrows
Mr. and Mrs. James E. Burt
Burt Lake Marina
Mr. and Mrs. Michael J. Buttigieg
Mrs. Elaine Couture Butts
Carol Calcaterra
Mr. and Mrs. Burke Campbell
Mr. and Mrs. John C. Campbell
Mr. and Mrs. Douglas E. Campbell
Ms. Gail Campbell-Ferguson
Mr. and Mrs. Martin Casey III
Mr. and Mrs. Russell Cecil
Mr. and Mrs. David A. Chambers
Ms. Laura Marie Chaney
Martha B. Cheney
Ms. Carla M. Chepy
Mr. and Mrs. Donald Chmielewski
Mr. and Mrs. David Churchill
Mrs. Goodwin Clark Jr.
Mr. and Mrs. Glen C. Clark
Mr. Michael Cleary
James and Carolyn Cloutier
Mr. and Mrs. Daniel M. Coleman
Nick and Virgina Colucci
Martha Condit

Our Membership and Supporters

If your name is not listed correctly in our annual report, please accept our apology and let us know about the error so we can update our records. Please call 231-347-1181. Thank you.

John E. and Patricia L. Courtney
Elizabeth Cowan
Ms. Elva O. Cowell
DeWayne and Joan Cox
Mr. and Mrs. Patrick J. Crahan
Ms. Agnes Cressy
Mr. and Mrs. William Crist
Mr. Thomas E. Crook
Mr. David R. Crothers
Mr. and Mrs. Ted Culver
Roger C. and Anette J. Cyr
Mr. and Mrs. J. Dewey Daane
Mr. and Mrs. Mark Daneff
Mr. and Mrs. Robert F. Davis
Ms. Olga Deak Trust
Mr. and Mrs. Carl Dean
Mr. and Mrs. Richard S DeVore
Joe and Mary Dickinson
Ms. Susan L. Dickow
Mr. Thomas Diesing
Mr. Joseph C. Dilger
Mr. Victor Dinsmoore
Ms. Sandi Disante
Mr. and Mrs. Arthur R. Disbrow
Mrs. Richard D. Dombrowski
Mr. Robert Dorst
Mr. and Mrs. Gary L. Doty
Mr. and Mrs. David E. Droste
Mr. and Mrs. Richard Dueweke
Mr. and Mrs. Kelly D. Duff
Paula R. Dukat
Ms. Ann Durbin
James Eberle
Mr. and Mrs. Walter R. Ebling
Mr. and Mrs. J. Chester Ebling
Mr. and Mrs. James R. Elliott
Mr. and Mrs. Jack Engledow
Erv and Marshon Erickson
Mr. and Mrs. Francis Esch
Mr. and Mrs. Mark Eustis
Mr. Robert W. Evans
Mr. and Mrs. Lynn Evans
Mrs. Virgeleen Fairbanks
Sasha Davis and Jeff Fancher
Mr. and Mrs. Wilfred C. Farner
Mr. and Mrs. Jon M. Fast

Mr. and Mrs. Dennis Fear
Mr. and Mrs. Neil Ferguson
Mr. and Mrs. Jerry Fettig
Jim and Judy Flanagan
Mr. and Mrs. Robert C. Ford II
Mr. and Mrs. Leo Forster
Mr. and Mrs. Anthony A. Foust
Mr. and Mrs. Leonard R. Franseen
Mr. and Mrs. William H. Frey
Geoffrey and Gail Frey
The Friends of the Boyne River
George and Maiga Friess
Mr. and Mrs. Doug Fry
Mr. and Mrs. Robert Frye
Jane Schneider and Dennis Fulbright
Mary Ellen Furseth
Mr. Joseph T. Galanek
Dr. and Mrs. James B. Gallagher
Mr. and Mrs. Dennis P. Gallagher
Mr. Ronald L. Gamble
Mr. and Mrs. William Garrock
Dan and Kathleen Gasper
Mr. and Mrs. Kurt Gearhiser
Jennifer Buchanan Gelb
Gingerbread House
Mr. William Glass
Mr. and Mrs. Don Glowicki
Mr. and Mrs. Richard Goldstein
Mrs. Mary B. Gonne
Mr. and Mrs. Robert Grabowski
Lois Graham
Drs. Donna and Jeffrey Green
Mr. and Mrs. Robert Greene
Mr. and Mrs. William E. Greenwalt
Mr. and Mrs. Michael W. Grimm
Mr. William F. Grubb
Mr. and Mrs. Joe Guild
Mr. and Mrs. Richard M. Gulau
Charles and Susan Gustafson
Donald E. and Grace A. Guthrie
Mr. and Mrs. Charles Hagen
Mr. and Mrs. Randall Hagerman
Mr. Clarence Hagerman
Mr. and Mrs. Fred H. Hall
Mr. and Mrs. Kevin O. Hall
Mr. and Mrs. Robert Hall

Ms. Mary Hammond
Mr. and Mrs. G. Richard Hancock
Mr. and Mrs. Hord Hardin II
Mr. John M. Harrington
Mr. and Mrs. William Harris
Ms. Jacqueline S. Harrison
Mr. John A. Hay
Mr. and Mrs. Daniel Hayes
Dr. Hubert Hayes
Ms. Loretta Hefka
Dr. and Mrs. Roger Heimbuch
Mr. and Mrs. William M. Henne
Mrs. Laura Higgins
Dr. and Mrs. Hashem M. Hilal
Hills of Walloon Association
Dr. and Mrs. Dale R. Hines
Mr. and Mrs. Stephen Hoadley
Mr. and Mrs. Kurt Hochstein
Mr. and Mrs. Herbert L. Hodge
Jim Hoffman
Mr. and Mrs. Andrew W. Hogarth
Mrs. Betty L. Holen
Mr. and Mrs. Benton B. Holt III
Bonnie Miller and Donald Homan
Richard Hopkins
Mr. Vern Edward Horn
Mrs. James H. Howe III
Mr. and Mrs. William J. Howell III
Ms. Heather Huffstutler
Mr. and Mrs. John Iaconi
Mr. and Mrs. Michael Jablonski
Richard and Lynnet Johnson
Mr. and Mrs. Rick Johnson
Suzanne Jontz
Mrs. Marian Jurries
Mr. and Mrs. Don L. Kaegi
Mr. and Mrs. John J. Karkosak
Mr. and Mrs. Thomas Kehn
Ms. Courtland T. Kelley
Mr. and Mrs. Richard Kellogg
Mr. and Mrs. David Kidd
Mr. and Mrs. Donald A. Kieliszewski
Mr. and Mrs. Charles R. Kinnaird
Mr. and Mrs. John S. Kirby
Matt and Karen Kirsch
Patricia Kishigo

Stewart and Susan Kissinger
Ms. Anne Klapheke
Mr. Robert J. Klein
Mr. and Mrs. John Klenczar
Ms. Mary Knickmeyer
Mr. and Mrs. John W. Knoppe
Mr. and Mrs. Robert G. Koffman
Mr. James A. Kozicki
Ms. Sandra Schoene Krahulik
Dr. and Mrs. Michael Kramer
Drs. David B. and Linda S. Krill
Mr. and Mrs. Frederick Kruger
Mr. and Mrs. Jerry J. Kulka
Mr. and Mrs. James D. Laarman
Mrs. William Labadie
Mr. and Mrs. John Lake
Lake Charlevoix Association
Lawrence Gardner Associates
Mr. William Ledeen
Mrs. David Lee
Minette Lefkiades
Neil and Carolyn Leighton
Helen Leitz
Ms. Lucille Lercel
Mr. and Mrs. Larry Levengood
Mr. and Mrs. Robert J. Lewis
Mr. and Mrs. James Likins
Mr. and Mrs. Hall B. Liles Jr.
Matt and Tonia Lindsay Jr.
Mr. and Mrs. Charles Lindsey
Ms. Mary Lirones
Mr. and Mrs. Douglas A. Lockhart
Ms. Stephanie Lockman
Mr. and Mrs. Richard E. Loeding
Mr. and Mrs. William R. Lovelace
Dr. and Mrs. Carl Luepnitz
Mr. Charles Lundstrom
Mr. and Mrs. Gunnar Lundteigen
Ms. Karen S. Lunquist
Mr. and Mrs. Richard Lynch
Ms. Jill Lynch
Jack and Vickie Lyon
Mr. and Mrs. Charles M. Mabley
Mr. and Mrs. Robert A. Mackay
Mark and Carolyn Malaski
Susan Malone

Mr. John W. Marshall
Ms. Sylvia Martin
Dr. and Mrs. John T. Martsoff
Mr. and Mrs. Duane C. Maxwell
Mr. and Mrs. Patrick K. May
Jim and Judy Mayo
Mr. and Mrs. Norman C. Mayrand
Lucy McArtor
Isabelle McCarthy
Mr. and Mrs. John E. McCarthy
Mr. and Mrs. Richard McLaughry Jr.
Mr. Robert McClean
Mr. and Mrs. Edward McClutchey
Todd Figgins and R.J. McKay
Mrs. Lewis McLouth
Mr. and Mrs. Richard McMillan
Dr. Fred McMurray
Mr. and Mrs. Derek I. Meier
Mr. and Mrs. Michael Meredith
Mr. and Mrs. Harold Merten Jr.
Ken and Mary Michelsen
Mr. and Mrs. Ken Miller
Mr. and Mrs. Robert Milne
Henry and Margaret Moczul
Mrs. Donna Moll
Mr. and Mrs. Christopher Monk
Mr. and Mrs. Peter Moran
Chris and Liisa Morley
Dr. Lloyd L. Mrstik
Ms. Deborah Nagel
Ms. Ginger Nash
Mr. and Mrs. Gerald C. Nelson
Mr. and Mrs. Franz Neubrecht
Mr. and Mrs. Bendt C. Nielsen
Mr. and Mrs. James W. Nihls
Mrs. Bob Nolan
Mr. and Mrs. Dick Nordin
Mr. and Mrs. Douglas Nouse
Kim Nowack
Mr. and Mrs. Jay Nowell
Ms. Theresa O'Brien
Ms. Karin Offield
Thomas and Mary O'Hare
Ms. Jean M. Ohlson
Carol A. O'Keefe
Jack and Margaret O'Malley

Our Membership and Supporters

If your name is not listed correctly in our annual report, please accept our apology and let us know about the error so we can update our records. Please call 231-347-1181. Thank you.

Mr. Woodard D. Openo
Mr. Gerhard F. Osterbeck
Mr. and Mrs. James Ott
Mrs. Robert J. Otto
Mr. and Mrs. Ed Overmyer
Mrs. Joseph Paczesny
Maureen Parker
Jan and Frank Parkinson
Dr. and Mrs. Charles Paschall III
Mrs. Mary Patenge
Mr. Kenneth Patterson
Mr. and Mrs. John Roy Peak III
Mr. and Mrs. Henry Peet
Mr. and Mrs. James Petcoff
Ms. Eliza Peterman
Mr. David O. Peters
Thomas and Kathryn Petz
Mr. and Mrs. Ronald Pigott
Mr. and Mrs. Robert Piotraczk
Ms. Kathleen S. Pistono
Sandra R. Planisek
Mr. and Mrs. Daniel Plasencia
Mr. and Mrs. Keith H. Podob
Mr. and Mrs. Stanley N. Pontius
Kevin and Dianna Prediger
Mr. Marty P. Prokopy
Ms. Elizabeth E. Proulx
Mr. Frank Proulx
Mr. and Mrs. Max R. Putters
Mr. and Mrs. Paul Quenneville
Rev. and Mrs. Richard C. Quinlan
Dr. and Mrs. Michael G. Raab
Ms. Patricia Randolph
Rasmussen, Teller, O'Neil & Christman
Mr. and Mrs. Gareth Reed
Mr. and Mrs. Donald E. Reh
Gary and Marty Reid
Mrs. Doris Richard
Ms. Mary Richards
Mrs. William P. Richards
Mr. and Mrs. James Ries
Dr. L. J. Gysel and Capt. C. M. Rigsbee
Mr. George G. Rinder
Mr. and Mrs. Richard E. Rinker
Mr. Jack L. Ripstra
Mr. and Mrs. Stephen L. Ritter

Kent and Alana Robbins
Mr. and Mrs. Larry Rochon
Mr. and Mrs. Leo Rolfes Jr.
Dr. and Mrs. Jay T. Rorick Jr.
Mr. and Mrs. Robert A. Ross
Dan and Alice Ross
Mr. and Mrs. Robert E. Rowlands
Mr. and Mrs. Sherman F. Rubert
Mr. and Mrs. Paul R. Runyan
Mrs. James E. Ryan
Mr. and Mrs. Lawrence Rychlick
Paul and Lori Sak
Mr. and Mrs. Louis Sanford
Mr. and Mrs. John N. Santeiu Jr.
Mr. and Mrs. Gerald Saxton
Ms. Harriette Schach
Mr. Chuck Schafer
Emily and Jeff Schoeny
Mr. and Mrs. Stefan Scholl
Carson Wright and Sandy Schreck
Dr. Daniel G. Schultze
Mr. and Mrs. Darrell Schwalm
Mr. Heinz Schwartz
Mr. and Mrs. J. Mark Scriber
Mr. and Mrs. Brett A. Seabury
Mr. Steven W. Seely
Erik and Carol Serr
Andrea and Ronald Shafer
Ms. Betty Shaver
Mr. Michael D. Sheean
Mr. and Mrs. William Shelton
Mr. and Mrs. Ronald D. Shepherd
Mr. and Mrs. Thomas R. Sheppard
Louis and Dorothy Simon
Mr. and Mrs. John Sims
Mr. Mark H. Sinclair
Margo and David Skaggs
Mr. Frank Skvarce
Mr. and Mrs. Bernie Slotnick
Mrs. Jane Smith
Ms. Carol Jean Smith
Mr. and Mrs. Melvyn L. Smith
Mr. and Mrs. Stephen W. Smith
Mr. and Mrs. Robert Smith
Scott Smith Carpentry Service
Mrs. Carolyn Snyder

Ms. Emily Gibson Soelter
Jon R. and Susan L. Stahl
Mr. and Mrs. Paul L. Staley
Mr. and Mrs. Thomas E. Stanley
Mr. and Mrs. Kendall Stanley
Mrs. Patricia Stanton
Mr. and Mrs. George M. Stefanos
Sue and Tony Stempky
Dr. David Stevens
George and Jan Stewart
Mr. and Mrs. Gig Stewart
Margot Stoehr
Mr. and Mrs. Gregory Stout
Ms. Marilyn Strader
Ms. Elizabeth Strawbridge
Ms. Esther W.P. Summers
Mr. and Mrs. Ronald Svatora
Mr. and Mrs. Joseph Swager
Nancy Sweet
Marti Swiger
Mr. and Mrs. David R. Tanski
Roy and Carol Tassava
Ms. Catherine Ann Taylor
Mr. David H. Templin
David and Jeanne Tennent
Mr. and Mrs. Momcilo Teodosic
Ms. Lauren D. Tepper
Mr. and Mrs. Lawrence R. Ternan
Mr. and Mrs. C. Thomas Terry
Dr. and Mrs. Edward Thomas Jr.
Mr. Richard E. Tindall
Mr. and Mrs. Richard C. Tipton
Mr. and Mrs. J.R. Tobin
Mr. and Mrs. Mark Tompkins
Ms. Geraldine M. Tracy
Mr. James Trimpe Sr.
Mr. and Mrs. Ronald H. Tschudy
Dr. and Mrs. Donald L. Tuckey
Donna Perla and Daniel L. Tuttle II
Mr. and Mrs. Norlin W. Tymes
Roman and Caroline Tykiewicz
Mr. and Mrs. Gregory R. Ulmer
Mrs. Marjorie Upton
Mr. and Mrs. Roger Vaughan Jr.
Mr. Leon Vercruysse
Steve and Becky Voice

Mr. Michael Volkman
Keith and Mandy Vreeland
John and Susan Vrondran
Mr. R. J. Waddell
Sally and Larry Wagle
Mr. and Mrs. Timothy C. Wallace
Margaret and Sara Jo Ward
Mr. and Mrs. Donald Warren
Ms. Barbara G. Weber
Mr. Steve D. Webster
Drs. Susan and Mark Weiss
Mr. and Mrs. Dell J. Weitzel
Mr. and Mrs. Daniel G. Wells
Mrs. Erma Wells
Ms. Paula L. Welmers
Ms. Mary Lou Wickowski
Mrs. William Wieland
Wildwood Property Owners and Club
Dr. and Mrs. Alan J. Wilhere
Mr. and Mrs. Dick Williams
Bob Williams
Mrs. Millicent M. Wilson
Mr. and Mrs. Roger W. Winslow
Mr. Alfred W. Wishart Jr.
Mr. Roman C. Wojtowicz
Mr. and Mrs. Robert Wolf
Mrs. Diana Woodbridge
Mr. and Mrs. James A. Wortley
Ms. Joan F. Wright
Mr. and Mrs. Steve Yauch
Dr. and Mrs. Daniel Zaroff
Dr. and Mrs. Lonny Zietz
Mr. and Mrs. John H. Zobus

Mrs. Ronald A. Black
Ms. Judith Blackburn
Mr. and Mrs. William P. Brennan
Ms. Mary J. Buhr
Mr. and Mrs. Van W. Burmeister
Mrs. Eunice L. Burns
Mr. and Mrs. Guy J. Busch
Dr. Mary L. Butterfield
Mrs. William J. Cameron
Mr. and Mrs. Shepherd S. Campbell
Mr. and Mrs. Will Campbell
Ms. Bethe Carpenter
Charlevoix Area Garden Club
Mr. and Mrs. Robert C. Charlton
John and Patricia Cieluch
Mr. Dennis Coan
Mrs. Ann McKee Coffin
Mr. and Mrs. Dan Cowan
Mr. and Mrs. Tim Craine
Mr. and Mrs. Ronald G. Creed
Ms. Wanda Cronenwett
Ms. Barbara L. Cullman
Mr. and Mrs. Robert Decker
Dr. and Mrs. Lester Dragstedt II
Dee and Madeline Drake
Dr. and Mrs. Frank K. Duiven
Mr. and Mrs. Richard Duke
Mr. and Mrs. Stephen E. Duncan
Mr. and Mrs. Graham Edwards
Mr. and Mrs. Charles Ellinwood
Fred and Jeannine Elliot
Mr. Richard Emrich
Carl J. Strebel and Fred Farage, Jr.
Mr. and Mrs. Eugene Ferries
Mary J. Firestone
Mr. and Mrs. Frederick J. Flavell
Mrs. Janet Forgione
Mr. and Mrs. John E. Fought
Jim and Sally Fraser
Mr. James W. Freeman
Ed and Rita Furdak
Dr. and Mr. Bernard Gallin
Mr. and Mrs. John Gosnell
Roger and Kathleen Gowell
Mr. and Mrs. Gary Green
Mr. and Mrs. Joseph L. Hardig Jr.

Sustainer \$1 - \$34

Mr. John Ambrus Jr.
Kate and Jen Andrews van Horne
Thomas and Genevieve Arnold
Ms. Deanna L. Arntson
Mr. and Mrs. Daryl Barbe
Mrs. Charles E. Bayless
Mr. and Mrs. Jerry R. Beehler
Ms. Nancy Berger

Our Membership and Supporters

If your name is not listed correctly in our annual report, please accept our apology and let us know about the error so we can update our records. Please call 231-347-1181. Thank you.

Ms. Lucy Hartlove
Ms. Sarah Hartman
Mr. and Mrs. Lawrence J. Hipschen
Mr. and Mrs. Robert Hocken
Mr. and Mrs. Charles K. Hooper
Mary Ellen Hughes
Katherine Melby and Bret Huntman
Mr. Thomas Isaia
Mrs. Dorothy Johnson
Mr. and Mrs. James M. Johnston
Ms. Paula A. Jonas
Mr. and Mrs. Bradley L. Jones
Mr. and Mrs. Terry Kasiborski Jr.
Mr. and Mrs. Gerald S. Kaspyk
Sheri Rhoads and Adam A. Kennedy
Ms. Janet Killian
Dr. and Mrs. Michael W. Koskus
Susan Mohr and Ken Krentz
Mr. and Mrs. Quinton L. Kuebler

Mrs. Dolores Lang
Mr. and Mrs. Bill Larsen
Mr. John J. Lawrey
Mr. and Mrs. Mark J. Lefevre
Ms. Joan Leonall
Mr. and Mrs. Jeremiah Mahoney
Mary K. and Dennis L. Martin
Mr. and Mrs. Daniel May
Mr. and Mrs. Jack Mayer
David McVicker
Mr. Robert L. Metzger
Dr. and Mrs. Fred V. Minkow
Mr. Ralph L. Moore
Mr. Adolph J. Neeme
Dr. and Mrs. Harold E. Nelson
Dr. and Mrs. Edward E. Newcomb
Col. and Mrs. David Nichols
Mr. John Pawelek
Mrs. Sedate Phillips
Mr. and Mrs. John L. Picton

Mr. and Mrs. Alexander I. Pirie
Mr. and Mrs. Dean Pollard
Mr. and Mrs. Robert O. Pritchard Jr.
Carl and Lorraine Rauen
Mr. Clark Richardson
Meredith E. Richter
Mr. and Mrs. Edmund C. Risdon III
Mr. Morris Rochlin
Mrs. Carl Rockwell
Mr. and Mrs. Michael J. Root
James and Jo Ellen Rudolph
Mr. and Mrs. Ken Rule
Mr. and Mrs. Daniel R. Rupp
Mr. John T. Santinga
Mr. and Mrs. John Schams
Mr. Richard H. Schiffer
Mrs. Carol A. Schmier
Mr. and Mrs. John Secrest
Mrs. Norman Shanahan
Mr. and Mrs. Charles L. Shearer

Ms. Marie Sheets
Mr. Jericho Simon
Mr. and Mrs. Daniel M. Sinclair
Mr. and Mrs. Garry M. Singel
Ms. Anna M. Skoglund
Mr. Clyde L. Slutz
Mr. and Mrs. Darrel Smith
Mr. and Mrs. William L. Snedden Jr.
Barbara Snyder
Ms. Carolyn Corbin and David Stebbins
Win Stebbins
Ms. Olga Stott
Mr. and Mrs. Todd Strauss
Mrs. Mary Ann Strickland
Mr. Michael C. Studer
Mr. and Mrs. James N. Sutherin
Mr. and Mrs. Robert S. Swanson
Mr. and Mrs. Richard M. Tanghe
Mrs. Eleanor Templin

Dr. Grenetta Thomassey
Dr. and Mrs. Richard Torchia
Mr. and Mrs. H. Jordan Truman
Ms. Dana Vannoy
Paula Vaughan
Walloon Writers Review
Mr. and Mrs. Josef Wandeler
Mr. and Mrs. Gregory C. Warner
Mr. and Mrs. Steve Watson
Jerry and Joyce Watters
Mr. and Mrs. Greg Webster
Mr. William G. Westrick
Mr. Thomas G. Whittingham
Mr. and Mrs. Joseph S. Wildberg
Mr. and Mrs. Todd Wiseley
Mr. Louis K. Wood
Mr. and Mrs. Frank L. Wright

Gifts in Honor of...

Honor of Joellen and Rod Rogers
Maureen Owens
Honor of Linda Badalucco
Linda Heller
Honor of Linda Heller
Rebecca Nadel
Honor of Milhizer Family
Kate and Jen Andrews Van Horne
Honor of Mr. and Mrs. A.W. Hallett
Charles Forsberg
Honor of Mrs Ronald Kauper
Charles Forsberg
Honor of Nancy and Brian Nowitzke
Linda Heller
Honor of Sally Wilson
Linda Heller
Honor of Tom and Wendy Feusse
Wallace Hibbard

Gifts in Memory of...

Memory of Alexander Taggart IV
Bruce Davis and Heidi Hill
Memory of Betty Finley
Christopher Finley
Memory of Carol Kromer
Birchwood Association of Mullett Lake
Memory of Charles Drouillard
Charles W. Drouillard
Memory of Chuck Bayless
Wayne Blomberg
Memory of Dorothy Aufranc
Birchwood Association of Mullett Lake
Memory of Dorothy Schwalm
Jack P Morris
Adger Thomann
Memory of Irene Phelps
Charles A Bentley
Bill Larsen

Memory of Jack Young

John Kafer
Mark Robinson
Carol Jean Smith
Peter S Sheldon

Memory of Joseph Lyons

Joseph Lyons

Earth Week Plus Donors

Earth Week Plus Donors
Steven and Susan Baker
Dr Roger F. Benter
Frank and Kathryn Bricker
Judi Chimner
Judi and Pete Chimner
Citizens National Bank
Terry and Mary Clayton
Fraternal Order of Eagles
Family Fare
Brad and Sharon Gerlach
R.E. Gouine - General Construction
Sue Ellen Jones
Judicial Mgmt Systems, Inc

John Kirby
Marilee Lillee
Cheboygan Lions Club
Little Traverse Conservancy, Inc
Gary and Patricia MaClake
Denny and Karen Martin
Robert J. Merrick, O.D.
Allen R and Jean Moberly
Lisa and Mike Readmond
Lisa Readmond
Rotary Club of Cheboygan
Seedums Garden Club
Robert H. Smith
Top of Michigan Trails Council
U.S. Inc.

Gifts in Kind

Bank of Northern Michigan
BC Pizza
Bearcub Outfitters
Cheboygan Tribune
D&W Fresh Market
Emmet County
Fifth Third Bank

Five Elements
Grain Train
Inland Route FlyFishing
Irish Boat Shop
Johan's Bakery
McLaren Northern Michigan Hospital, Petoskey
Meijers
Mighty Fine Pizza
Michigan Maple Block Co.
Oleson's Market
Petoskey-News Review
Petoskey Plastics
Pickerel-Crooked Lakes Associaion
Plath's Meats
Roast & Toast
Ryde Marina
Stafford's Hospitality
Straitsland Resorter
Sunrise Rotary Club
Tom's Mom's Cookies
Walloon Writer's Review
WalMart

Foundation Gifts



Tip of the Mitt Watershed Council Fund 1-1-2015 through 12-31-2015

A.L. Westhoven Rentals
Neil and Liz Ahrens
Jason and Suzanne Allen
Clyde and Nancy Allison
Linda and Alec Amstutz III
Anonymous
Joanne Arbaugh
Les Arnold
Bill and Maxine Aten
Phil and Lynn Baker
Jay and Kris Balasz
Tom and Pam Barnes
Nicholas J. and Jill M. Barnum
Ann Baughman
Scott and Kaye Beatty
Bradley and Dana Bensinger
Bergmann Marine Company
Mary Biagini
Paul and Lisa Blanchard
Terry and Arlene Blissett
Russ and Sue Bolt
Jason and Jennifer Booher
Mary Senger and Paul Brendtro
James and Denise Brown
Richard and Stephanie Brown
Gary and Lynn Buffington
Builders North, Inc.
Julie Burgess
Mike and Pat Carland
Glen and Gwen Catt
Challenge Mountain of
Walloon Hills, Inc
Sherman Chamberlain Jr.
Charlevoix Country Club
Charlevoix Education Association
Charlevoix Lions Club
Charlevoix Public Library
Board of Trustees
Charlevoix State Bank

Chicago Summer Resort Company
Child & Family Services of
NW Michigan, Inc.
Kristina G. Clark
Thomas and Glenda Conlan
Annmarie Conway
Rod and Michelle Cortright
Art Curtis III
Gail Gruenwald and Wil Cwikiel
Charles and Kathy DiMaria
Kirby and Jacqueline Dipert
Sandra A. Disante
Mike and Rhea Dow
Dolores Doyle
Raphael and Sherry Dwyer
Michael and Debbie Esposito
Mary Faculak
Gary and Karen Denise Fate
John E. and Glenda Ferguson
Barbara Frantz
Freshwater Future
Frey Foundation
Friends of the Charlevoix Public Library
Jack and Judy Gallagher
Livia Gill
Bill and Pam Gnodtke
Good Samaritan Family Services
Roger J. and Kathy Gowell
Grand Traverse Regional
Community Foundation
Tom and Ann Hanna
Chip and Laura Hansen
Hilary Harrington
Heather Harrod
Laura Heintzelman
Don and Kay Heise
Bruce and Joyce Herbert
Tom and Diane Hess
Jack and Gaye Hodge
Joe and Ann Hollis
Mark and Nancy Hollis
Jim and Evelyn Howell
Mark and Katherine Hramiec
Katherine Melby and Bret Huntman
Irish Boat Shop
Paul and Judith Ivan

Valerie Meyerson and
Thomas Johnson
Emmaline Weidman and
Daniel L. Kantor
Marjory Cohen and Melvin Kaufman
Bob and Mary Keedy
Anne Kelly
Gena Cross King
Carolyn L. Klooster
Chuck and Alida Klooster
Vinnie and Conrad L. Klooster, Jr.
Nathan and Joylene Klooster
Chris Krajewski
Alex Kuiper and Family
Luther and Mary Kurtz
Dennis and Nancy LaCroix
Mary Anne Griffin and Tom Lagerstrom
Amelia Lalewicz
Martha Lancaster and Doug Fuller
Kent and Linda Larsen
Leadership Charlevoix County
Frank and Carol Leonard
David and Carolyn Leusink
Larry and Gayle Levengood
Dianne Litzenburger
Peter and Sandy LoDico
Bruce MacArthur
Carol and Herm Madison Jr.
Fred and Barb Malpass
Jan Mancinelli
Chris and Sarah Matye
John and Susan McCloskey
Skip McDonough
David S. and Debra McKeon
Heath and Lori Meeder
Roy and Patricia A. Messink
William H. and Jane Millar
Mrs. and Mr. Ayers Morison Jr.
Susan J. Murchie
Daniel Myers
Thomas H. and Margaret L. Myers
Mark and Michelle Nichols
Maureen Nicholson
North Central Michigan College
Northern Community Mediation
Marilyn Novak

Amy Parker
Rebecca Parker
Bea Parton
Carol Paxton
Petoskey-Harbor Springs Area
Community Foundation
John and C. Jill Picha
Jack and Danielle Poindexter
Jeffrey and Nancy Porter
Prein & Newhof
Judy Przyblski
Jeff and Sue Pulaski
Max R. and Mary A. Putters
Mike and Kate Radke
Craig J. and Mary E. Rapin
Tim and Joy Reade
Bruce and Mary Ringey
Gary and Mary Ann Roberts
Joel and Melissa Robinson
Jeff and Suzanne Rogers
Mason and Lynne Rosenthal
James M. and Jo Ellen Rudolph
Gordon and Sharon Russell
Bill and Madelyn Ryan
Andrew and Jo Sahara
Jim Schumann
T. and M. Shattuck
Jim and Cindy Shea
Shinners & Cook, P.C.
Rob and Mishelle Shooks
Logan Smith
Scott and Dibby Smith
Stanley R. and Marilynn L. Smith
Mark and Valerie Snyder
Vikki Sobleski
Vince and Jackie Spagnuolo
Gary and Sharlene Spencley
Marell Staffel
Rob and Rose Straebel
Elizabeth Strawbridge
Jeff and Sheryl Sweeney
Rocky and Rachel Swiss
Paul and Diane Swoboda
Bob and Gretchen Tambellini
Mary Lou Tanton
Tip of the Mitt Watershed Council

Daniel and Mary Tomasek
Ben and Erika Van Dam
Stephen R. and Jean A. Van Dam
Van Dusen Family Charitable Fund
Steven Voci
John and Sue Vrondran
Brent and Sara Ward
Ron and Terri Warnos
Mary Margaret Welch
Tanya M. Whitley
Paul H. and Joan D. Witting
Connie Wojan
Trish Woolcott
Barbara Wotila
Alice Wright
John and Linda Yaroeh
Joe and Kendra Zielinski

Maura Brandi MSU Internship Fund 1-1-2015 through 12-31-2015

ACE Hardware - Charlevoix
Dave and Linda Atkins
Pamela Blough
Maureen Radke and Rick Brandi
John W. and Mary Lee Campbell
Bruce G. and Jannet Douglass
Michael Dul
David and Katherine Frederick
Reed and Janet Freidinger
Dennis and Marlene Golovich
Wendy Graham
Lee and Susan Haddix
George and Shirley Haggard
Robert L. Hickey
Alfred and Alison Hubbard
Clark R. and Katherine Hull
William Jamnick
Anne Kelly
Marlin and Polly Mittag
Jean Musilek
Tim and Tricia Petrosky
Polakowski Fund
Tim and Joy Reade
Lorie Degrazia and James Schlappi
Site Planning Development, Inc.
Bob and Gretchen Tambellini

If your name is not listed correctly in our annual report, please accept our apology and let us know about the error so we can update our records. Please call 231-347-1181. Thank you.



**Tip of the Mitt
Watershed Council
Water Quality Fund**

Steve & Kathy Boeckman
Bob & Letty Fawcett
Eric Grandstaff/Alexis Kaczynski
Gail Gruenwald/Wil Cwikiel
Mr. and Mrs. Jim Helmer
Mr. and Mrs. Patrick Hylant
Drs. Andris and Irene Kazmers
Loyd Family Fund (PHSACF)
Mark Paddock
Eric Rasmussen/Kate
McVicker
James Schroeder
Shattuck Family

Volunteers

Whale of a Sale Volunteers

Althea Arnold
Wayne Bloomberg
Michael Esposito
Dylan Hayes
Kate Laramie
Alexis Schefka

Watershed Academy Volunteers

David Cummings
Kira Davis
Lauren Dey
Paul Drevnick
Doug Fuller
Melissa Hansen
Heather Huffstutler
Caroline Keeson
Adam Kennedy
Sarah Mayhew
Peg and Tom Myers
Heidi Shaffer
Teresa Sherwood
Derek Shiels
Ed and Diane Strzelinski

Special Projects Volunteers

Sharon Brown
Roger Drinkall
Ed Strzelinski
Larry Levgood
Snowapple Landscapes
Sarah Wolf
Sophia Cinnamon
Brittney Rohrer
David Spieser

RSVP Volunteers

Sharon Brown
Gretchen Peck

AmeriCorps Volunteer

Mackenzie Dix

Summer Interns

Althea Arnold
Dylan Hayes
Kate Laramie
Alexis Schefka

University of Michigan School of Natural Resources and Environment Interns

Brandon List
Stephanie Miller
Elliot Nelson
Kevin Peterson
Lauren Silver

POD Collection Days Volunteers

Ed Strzelinski

Students Experience Lake Charlevoix Volunteers

Kristy Beyer
Justin Bragg
Linda Burgert
Michael Buttigieg
Dave Clapp
Kevin Cronk
Kate Cwikiel
Suzie Dickow
Ralph Dietz
Kristen Grote
Nancy Hill
Dylan Hayes
Chris Heroy
Caroline Keeson
Matt Kleitch
Kate Laramie
Jim Leh
Larry Levgood

Julie Lowe
Bill Oeming
Cassidy Peebles-Marfuta
Bob Pursel
Sherry Pursel
Alexis Shefka
United States Coast Guard
(last names): Adams, Ruffin,
LaBorde, Vega, Martin, and Lamb

Bear River Cleanup Volunteers

Picnic Aumnoyphanwilai
Eric Baldwin
Gus Baldwin
Stephanie Baldwin
Joe Barbercheck
Libby Barbercheck
Nancy Barker
Kristy Beyer
Darlene Boatin
Herm Boatin
Elisabeth Braendle
Katie Braendle
Micah Braendle
Linda Brant
Dave Brines
Tracy Brines
Matt Claucherty
Ruth Clausen
Fred Clinton
Mary Clinton
Kate Cwikiel
Wil Cwikiel
Alexis Daniel
Cheryl Dix
Mackenzie Dix
Pete Dix
Anne Donakowski
Roger Drinkall
Heidi Dumas
Jack Dumas
Kelly Dumas
Denise Dundon
Henry Dundon
Ellie Dyer

Gavin Dyer
Larry Dyer
Brian Eckerle
Ethan Eckerle
Lynn Eckerle
Brendon Egolf
Regine Egolf
Louis Fantini
Brad Foster
Nicholas Foster
Rick Fowler
Sue Fowler
Megan Feeley
Christine Gebhard
Jen Buchanan
Gail Gruenwald
Brett Hannon
Andy Hayes
Cindy Hayes
Steve Hayes
Chris Hinriats
Steve Hize
David Horton
Heather Huffstutler
Seth Izzard
Doreen Jagodnik
Annie Jankowski
Henry Jankowski
Kathy Karenko
Dave Kiefer
Kathy Kittleson
Russ Kittleson
Paul Krecke
Fred Liederbach
Kathy Liederbach
Sarah Liederbach
Jonathan Luckhardt
Mike Malleis
Sheila Malleis
Nick Maragioglio
James McConnell
Kathryn McConnell
Jennifer McKay
Don Moore
Thea Murray
Dan Myers

Drew Nicholas
Diane Nichols
Lee Phillips
Jan Quaine
Tom Renkes
Judy Reynolds
Wally Reynolds
Margaret Ritchie
Thomas E Ritchie
George Robson
Mary Rose
Ray Rose
Joyce Seymour
Truman W Seymour
Teresa Sherwood
Sherman Shultz
Amber Simon
Craig Simmons
Elizabeth Simmons
Betty Simon
Brenden Smith
Scott Smith
Heidi Snell
George Snyder
JoAnne Snyder
Cathy Solms
Nancy Stewart
Emil Suarez
Mindy Taylor
Tom Taylor
Grenetta Thomassey
Breanna Thompson
Chucky Thompson
Joel VanRoekel
Sally Wagle
Bill Wehrenberg
Dolores Wehrenberg
Jane Wehrenberg
Alan White
Allison White
Paul Witting
Isaac Winnell
Jen Winnell
Todd Winnell
Hap Wright
Nathaniel Wurster

If your name is not listed correctly in our annual report, please accept our apology and let us know about the error so we can update our records. Please call 231-347-1181. Thank you.

Volunteers

Volunteer Stream Monitors

Victoria Anderson
Carrie Beemon
James Benzing
Darlene Boatin
Herm Boatin
Blaze Budd
William Cabana
Dave Clapp
Dylan Clapp
Ian Clapp
Matt Claucherty
Nancy Cunningham
Mackenzie Dix
Ellie Dyer
Gavin Dyer
Larry Dyer
Josh Epperly
Jim Ford
Laurie Ford
Laurie Gaetano
Kathy Germain
Janie Guiliani
Mike Grant
Bob Haack
Sheridan Haack
Susan Hannah
Dylan Hayes
Bekki Heckman
Joe Jarecki
Judi Jarecki
Richard Jenkins
Sally Johnson
John Kafer
Adam Kennedy
Jim King

Kate Laramie
Jill Lynch
Chrystal Marihugh
Jack Marlette
Rick Meisterheim
MaryAnn Moore
Connie Morgan
John Morgan
Hannah Muladore
Jennifer Muladore
Thea Murray
Patty Nowell
Tom Ochs
Gary Olsaver
Darryl Parish
Sandy Planisek
Annette Pulford
Steve Reh
Sheri Rhoads
Nancy Rucinski
Ralph Rucinski
Steve Sawyer
Eric Schupbach
Darrell Schwalm
Ann Scott
Chris Searles
Marie Sheets
Karie Slavik
Christine Steensma
Jerry Swift
Diane Strzelinski
Ed Strzelinski
Jack Talcott
Roy Tassava
John Teesdale
Lee Tegland
Sharyn Thompson

Chuck Thurston
David Trigg
Sarah Trigg
Barbara Upton
Beth Varty
Sally Wagle
Jill Whelan
Charles Wilson
Mike Winnell
Tip of the Mitt Watershed
Academy Students
Troy Athens AP Biology Students
Anne Zukowski

Volunteer Lake Monitors

AmeriCorps Volunteers
Jerry Beehler
Cliff Biddick
Dr. Art Budden
Jim Burke
Dimitri Capers
Nancy Capers
Jan Christian
Dave Clapp
Dylan Clapp
Ian Clapp
Dale Claudepierre
Elwin Coll
Tom Darnton
Dale DeKraker
Dick Elliot
Ted Ewald
Jacob Fedrigon
John Fowler
Dean Ginther
Sam Gaither
Tom Gschwind

John Hamman
Steve Hansen
Kelly Hogan
Gordon Hollaway
Liz Hollaway
Art Jackson
Cathy Jackson
Jim Jackson
Tim Kohr
Ken Krentz
Fabian LaVigne
Nancy LaVigne
Jill Lynch
Jeff Malak
Paula Malak
Judy Meredith
Tom Myers
Tony Naylor
Joseph Nerone
Mary Anne Newman
Dick Nordin
Dean Pollard
Kevin Prediger
Steve Reh
Barbara Ressler
John Ressler
Jim Schneider
Caitlin Scroggins
Dick Segrist
Barbara Shelton
Daniel Sinclair
William Stetson
Bill Stone
Daphne Stone
Luke Stone
Jane Stone
Jim Stone

Don Venburg
Bob Williams
Kay Winslow
Roger Winslow
Austin Wolfgram
Beverly Zelt

Volunteer Avian Botulism Monitors

Nancy Barnhart
Randy Barnhart
Gary Batka
Kathy Batka
Sue Bissel
Tec Cummings
Kimberly Dowd
Kady Elkins
Dana Fields
Rick Fowler
Jacque LaFrenier
Harry Lennick
Linda Moore
Ron Moore
Tom Myers
John Porter
Mary Rose
Ray Rose
Gary Thurston
Judy Thurston
Carole Vial

If your name is not listed correctly in our annual report, please accept our apology and let us know about the error so we can update our records. Please call 231-347-1181. Thank you.



Left to Right, Top Row: Kristy Beyer, Lindy Buffington, Dylan Hayes, Matt Claucherty, Gail Gruenwald, Jennifer Buchanan, Sandy Schreck, and Debbie Esposito. **Center Row:** Althea Arnold, Kate Cwikiel, Mackenzie Dix, Jennifer McKay, Alexis Schefka. **Front Row:** Kevin Cronk, Dan Myers, and Kate Laramie.