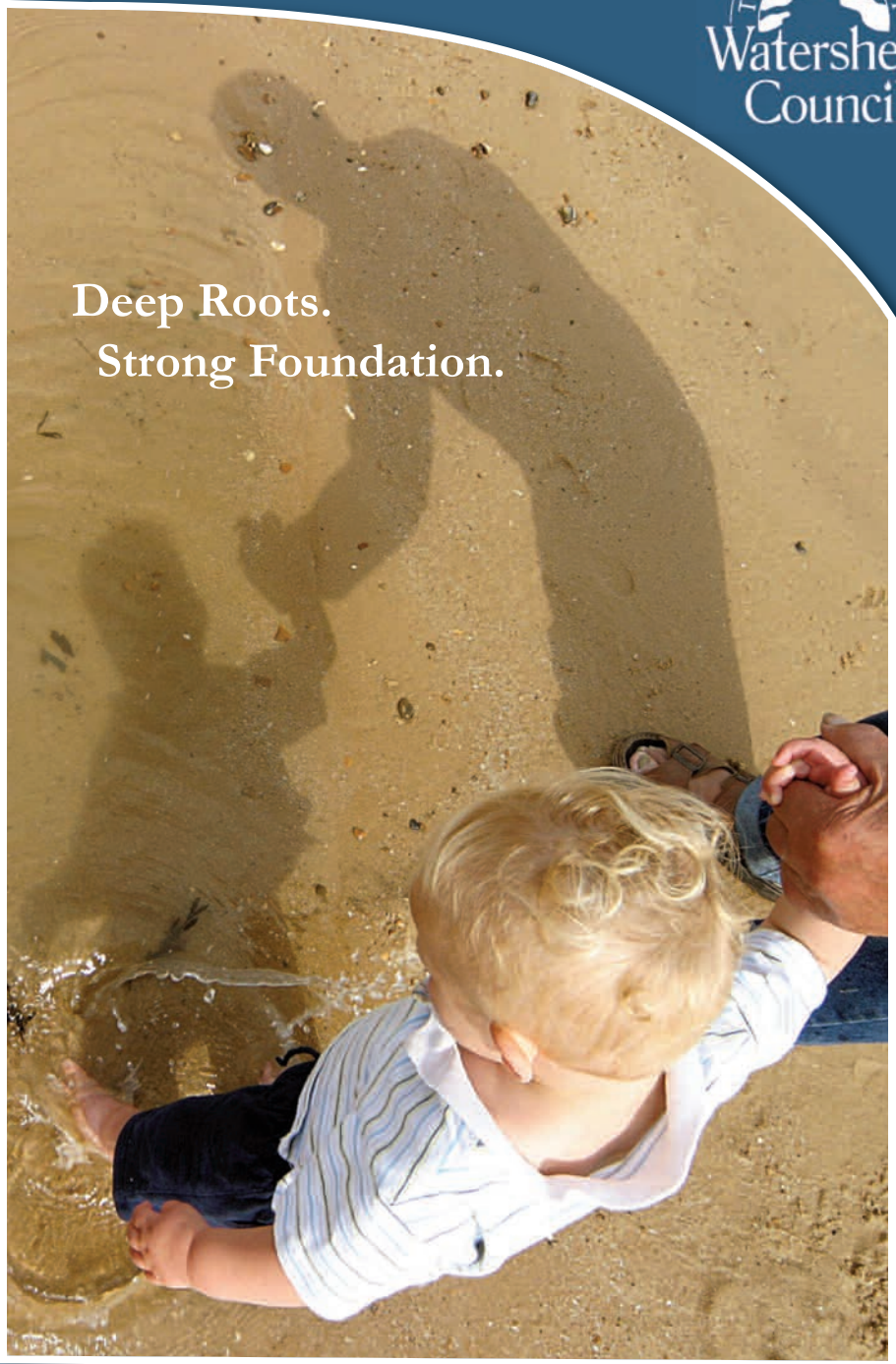




Deep Roots.
Strong Foundation.



2009 Annual Report

Deep roots are not reached by frost.

- J.R.R. Tolkien



Left: David Crouse,
President

Right: Gail Gruenwald,
Executive Director

2009 Board of Directors

David Crouse, *President*
Michael Esposito, *Vice President*
Tony Naylor, *Treasurer*
Connie Vorenkamp, *Secretary*
Wayne Blomberg

Norton Bretz
Sue Costa
Peter N. DiMercurio
Tom Kennedy
Howard Newkirk

Kent Reynolds
Bill Stetson
Trish Woollcott

Dear Friends,

This year Tip of the Mitt Watershed Council celebrates 30 years of lasting results. All along the way we have stayed true to our mission: to maintain the environmental integrity and economic and aesthetic values of lakes, streams, wetlands, and ground water in Northern Michigan, as well as statewide and throughout the Great Lakes Basin. Our deep roots extend throughout Northern Michigan and are woven into the rich relationships that have developed into a strong foundation for our organization over the past thirty years.

This Annual Report reflects some of the Watershed Council's most significant accomplishments of 2009, which would not have been possible without the hard work of our dedicated staff and countless local, state, tribal, and federal partners. For your enjoyment, along the bottom of the report, we have included a timeline of our most significant accomplishments from the past thirty years. While we have much to celebrate, many challenges lie ahead.

In the coming years we will rely on our deep roots and strong foundation to continue our efforts to clean up and restore impaired waters, protect healthy watersheds, and address very complex environmental issues such as the threat of Asian carp in the Great Lakes, hydro-fracturing, and more. We will continue to make advances in our water quality monitoring programs that help us better measure environmental progress as well as guide our future management decisions. We will also need to be innovative and explore ways to leverage the great works of our organization.

This is a personal milestone for me: after seven years as a board member, the past three as President, I am now leaving the board. On behalf of the Board of Directors, I commend Gail Gruenwald, our Executive Director who celebrated her 25th anniversary with the Watershed Council in 2009, and the entire staff, who I have become personal friends with, for the many accomplishments achieved during the past year. I also extend my sincere appreciation to the committee members, community volunteers, and businesses that have assisted the Watershed Council time and again. It has been wonderful getting to know many of you. I would also like to take this opportunity to thank the Board for allowing me the opportunity to serve as their President. I have enjoyed being part of the Tip of the Mitt Watershed Council's legacy ~ creating deep roots and a strong foundation of water resource protection.

Sincerely,



David G. Crouse



Celebrating 30 Years of protecting
Northern Michigan's water resources.

Pictures from the 2009 Annual Meeting.



1975

First organizational meeting
in Mark Paddock's cabin at
University of Michigan
Biological Station (UMBS)
on Douglas Lake

1979

Kick-off meeting
for Tip of the Mitt
Watershed Council,
hosted by Art Gold

1980

Articles of Incorporation
filed with State of Michigan

In the year 2009, Tip of the Mitt Watershed Council celebrated its 30th anniversary. In this report we look back at the highlights of our work over the years and reflect on the accomplishments of 2009.

Policy & Advocacy

- **Federal issues** addressed and legislation that passed with the assistance of the Watershed Council's Policy and Advocacy team:
 - As members of the Steering Committee of the Healing Our Waters Coalition, we worked to pass historic federal legislation to address urgent threats to the Great Lakes. The Great Lakes Restoration Initiative (GLRI) received \$475 million dollars as part of the Interior and Environment Appropriations Act of 2010.
 - We also helped secure over a billion dollars from the Economic Stimulus package to repair aging sewers and accomplish habitat restoration across the Great Lakes Basin.
 - In November of 2009, DNA monitoring tested positive for the presence of Asian carp beyond the electronic barrier meant to keep them out, 6 miles from Lake Michigan. For many years prior to this incident, we worked to prevent these invasive fish from entering Lake Michigan. This continues to be a high priority as we advocate for the hydrological separation of the Great Lakes from the Mississippi River Basin.
- **State Issues** addressed and legislation that passed with the assistance of the Watershed Council's Policy and Advocacy team:
 - Thanks to our leadership, and after a long, arduous eight month battle, a bill to save Michigan's Wetland Protection Program passed the state legislature. The bill also created a Wetland Advisory Council and we were appointed to serve.
 - A state law passed making it illegal to launch a boat into the waters of the state with an aquatic plant on it, attempting to prevent the spread of aquatic invasive species.
 - The marina operating permit bill was successfully passed with our recommended changes.
 - A ban on phosphorus in dishwashing cleaning products passed upon the recommendation of the state Phosphorus Task Force, on which we served.

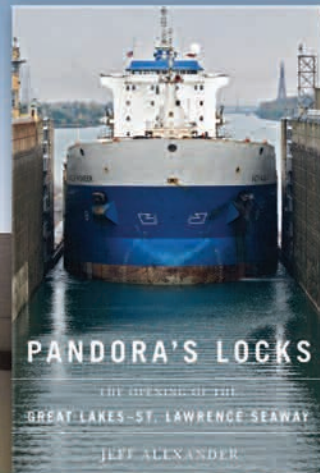
1982

First office set up
on Lake Street
in Petoskey

Issues: Wetland fill on Round Lake, National Wild and Scenic River designation for Pigeon River, Emmet County Sanitary Code, Cheboygan Zoning, Alanson Locks



The Lake Association Summit and Lake Michigan Summit were a huge success in 2009.



1983

Membership grows to 141 individuals, families and organizations

1984

Volunteer Lake Monitoring program starts on 10 lakes

Staff expands to include a Science Advisor, Legal Consultant, and Membership and Communications Coordinator

Policy & Advocacy *(continued)*

- **Local Issues** addressed by the Watershed Council Policy and Advocacy Team:
 - Helped organize and participated in four local pharmaceutical collection events in Emmet County to prevent those substances from entering our waters.
 - Reviewed and commented on local Master Plan work: Blueprint Petoskey and the Charlevoix County Future Land Use Plan.
 - Assisted in the formation of, and participated in, the Bay Harbor Regional Stakeholder Group.
 - Participated in the five-year review of the PMC Groundwater Superfund site in Petoskey.
 - Fundamental research for the Local Ordinance Gaps Analysis was completed. The goal is to evaluate all existing water-related ordinances Cheboygan, Emmet, Charlevoix, and Antrim counties. The analysis is being done at the county, city, and township levels to determine if existing water-related zoning is sufficient.
 - The 5th Annual Lake Association Summit was held in June of 2009. This meeting allows Lake Associations to network with others to learn how to advocate effectively using today's technology, participate in partnerships to battle invasive species, and explore potential partnerships for future water resource protection. This year featured a special guest speaker, Jeff Alexander, the author of "Pandora's Locks."
 - The Lake Michigan Summit was expanded to two locations, Harbor Springs and Charlevoix. The 2009 Summits featured presentations and discussion by Watershed Council staff and other organizations on the current health of Lake Michigan and Little Traverse Bay, and how we can work together to restore and protect our magnificent waters.

1985

First Annual Lake Expo
draws 200 people

Reviewed 200 dredge
and fill applications

1986

Developed first comprehensive
management plan on Burt Lake
along with Northeast Michigan
Council of Governments



1987

Comprehensive Water
Quality Monitoring
Program began

1988

Initiated Ground Water Protection
and Education Program

Piloted Adopt-A-Stream program to
provide protection for rivers and
streams in the region

Watershed Protection and Education

- In 2009 we launched an updated website creating a more user-friendly platform to provide detailed information about our services and the water bodies in our service area.
- Initiated the “Ice Breaker” Education Series. This brown bag lunch discussion group was launched in January 2009. Topics included the new Water Withdrawal Assessment Tool, Volunteer Monitoring Programs, Policy Priorities, Northern Michigan Rivers, and Native Plants.
- With funding from a private individual, the Bay Harbor Foundation, and a grant from the BoatUS Foundation the Watershed Council was able to produce 5000 Boater Bundles to help build awareness of good boating practices, clean water, and current issues affecting the waters in our Northern Michigan recreational boating community.
- In an effort to raise additional funds and educate the community about the importance of using native plants in their landscaping, the Watershed Council hosted a Native Plant Sale. Over 180 plant kits were sold during the event.
- Tip of the Mitt Watershed Council and the Lake Charlevoix Association hosted the 16th annual “Experience Lake Charlevoix” event. The hands-on program is designed to teach sixth grade students from Boyne City, East Jordan, Charlevoix, Concord Academy-Boyne, St. Mary’s, and Northwest Academy about Lake Charlevoix and its watershed, including water quality, ecology, and safety.
- The Watershed Council hosted six aquatic tours as part of their “Wednesdays on the Water” series. The series included group paddles on Wilson Lake, Susan Lake, and the Black River, plus a pontoon tour of Paradise Lake, an aquatic invasive species driving tour, and a Little Traverse Bay bike tour.

1989

Tested 1,265 private wells
for nitrate contamination

Formed Great Lakes Wetlands
Policy Consortium

1990

Added the watersheds of Antrim
County to service area

Adopt-A-Stream
expanded



1990

1991

1992

Formed the Michigan
Wetlands Action Coalition

Dissolved oxygen studies on Lake
Charlevoix and Elk-Skegemog Lakes

Hosted first
Little Traverse Bay
Beach Clean-up

Zebra mussel
study conducted
to monitor spread

Watershed Protection and Education (continued)

- The Watershed Council completed two projects for the “Treasure Lake Charlevoix” (TLC) program with funding provided by the Charlevoix County Community Foundation and the Frey Foundation.

- The first project was the design of a personalized storm drain curb inlet hood and a round storm drain cover developed by the East Jordan Iron Works that have a pollution prevention message that will be used in Charlevoix, Boyne City, and East Jordan.



Custom designed
storm drain cover

- The Watershed Council staff also worked with the City of Charlevoix to develop a plan containing stormwater management recommendations and streetscape design guidelines for the drainage basin surrounding Park Avenue in downtown Charlevoix.

- The Watershed Council partnered with the Lake Charlevoix Association to develop and install aquatic invasive species awareness signs at five boat launch locations on Lake Charlevoix. This project was funded by the Buhr Foundation, the Lake Charlevoix Association, and the Charlevoix County Community Foundation.

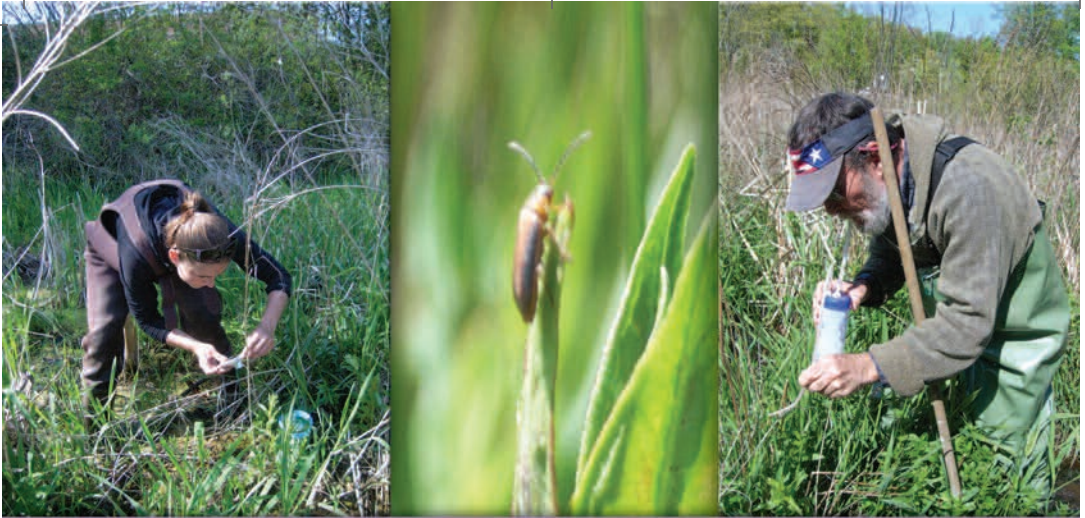
- During the 7th Bear River Cleanup, volunteers and staff members removed approximately 52 bags of trash and several large items from the Bear River spanning approximately four miles before it enters Little Traverse Bay. The 2009 cleanup was sponsored by Petoskey Plastics and the Clannad Foundations.

1993

Conducted shoreline
pollution survey on
Six Mile Lake

Awarded White Pine Award from
Michigan Senate Republicans
for outstanding achievement
in watershed protection
and education

First television public
service announcements
produced and aired



Purple Loosestrife Beetle Collection:

*Transplanting *Galerucella* beetles for biological control of purple loosestrife.*



1994

Shoreline erosion control program begins; 23 property owners receive consultations

Clean Waters Award from Michigan Outdoor Writers Association

1995

"Experience Lake Charlevoix" school-aged education program created

33 Lakes included in Comprehensive Water Quality Monitoring Program

Watershed Protection and Education (continued)

- In early June, two Purple Loosestrife beetle collections days were held. Participants included members of the Pickerel-Crooked Lake Association, Twin Lakes Association, Friends of the Jordan, Little Traverse Bay Bands of Odawa Indians, and US Fish and Wildlife Service.
- Our summer fundraiser entitled “A Whale of a Sale” - A Huge Sale for Water Recreation Lovers - generated lots of fun and netted nearly \$10,000 for our programming.



Restoration Projects

- As part of the two-year, multifaceted *Cheboygan River Watershed Restoration Initiative*, staff performed shoreline and streambank erosion assessments in the Watershed. Two severely-eroding shorelines were stabilized using bioengineering methods, bringing the National Fish and Wildlife Foundation-funded project total to over 700 restored linear feet (including 5 shoreline and streambank projects).
- Bear River Watershed and disc golf course maps, along with wet land-sensitive trail matting, were installed in partnership with the City of Petoskey at the River Road Sports Park. The Petoskey-Harbor Springs Community Foundation-funded project continued the Watershed Council's ongoing Healing the Bear efforts.

1996

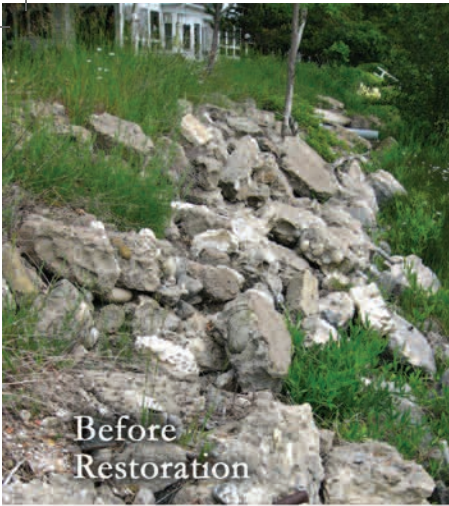
Watershed Council
goes online

910 feet of shoreline erosion
corrected and 600 trees and
shrubs planted for erosion control

1997

Initiated aquatic field trips led
by staff and volunteers

350 permits reviewed
for projects that could
effect wetlands, lakes
and streams



Just one of the **MANY** restoration projects completed in 2009.

The Evangeline Township Park on Lake Charlevoix, Glenwood Beach Drive.



1998

Watershed Council
launches Michigan
River Network

Shoreline survey
conducted on
Walloon Lake

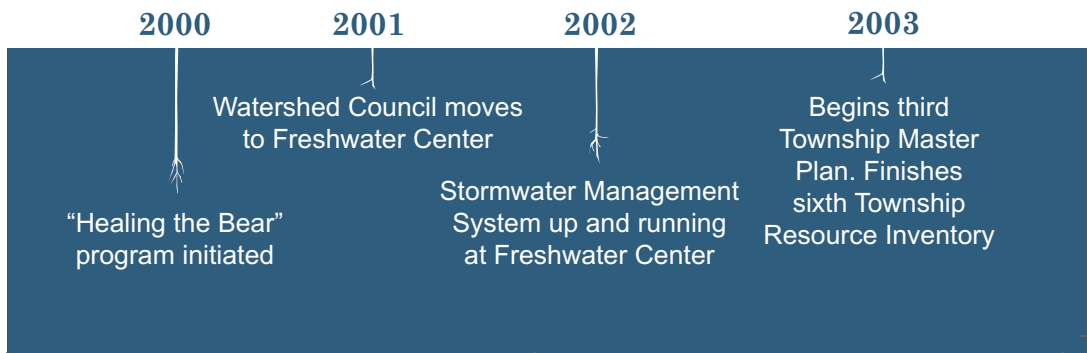
1999

Conservation
Planning and Design
program initiated

Watershed Council helps
to form Michigan
Environmental
Law Center

Restoration Projects *(continued)*

- As part of the US Fish and Wildlife Service-funded Restoring Stover: Rehabilitation of a Community Creek, staff identified and assisted with restoration of two severely eroding streambank sites on Stover Creek within Charlevoix's Brookside Cemetery. The two-year effort stabilized a total of approximately 160 linear feet (including 3 projects) with bioengineering methods. In addition, removal of several large log jams and other debris improved stream flow conditions.
- Obtained funding to complete removal of Chandler Dam, located on the Upper Black River within the Pigeon River Country State Forest. Removal will take place in 2010.
- Designed and assisted with installation of a shoreline enhancement and demonstration greenbelt project at Evangeline Township's Glenwood Beach Park. The project included stabilizing the shoreline with more lake- and user-friendly fieldstone, incorporating planting pockets within the fieldstone revetment, adding a stairway for recreational access, and a native plant greenbelt including boulder seating.
- Designed and assisted with installation of a residential shoreline stabilization project on Elk Lake.
- Performed reviews and provided comments on countless project proposals, including site plans and stormwater projects, for local governments, lake associations, businesses and other organizations.
- Participated in the development of the Michigan Natural Shoreline Partnership (MNSP) which promotes natural shoreline landscaping and management. The MNSP objectives include contractor training, riparian property owner education, research, and the promotion of local and state policies which support natural shorelines.





Protecting and monitoring our waters all year long.



2004

Little Traverse
Bay Watershed
Protection Plan
completed

2005

Held First
Bear River
Bio Blitz

Launched
Algae Rapid
Response
System

2006

Volunteer
Purple Corps
initiated to
identify and
control Purple
Loosestrife

Hosted public
forum on the
cleanup at
Bay Harbor

Monitoring and Research

- A comprehensive shoreline survey was conducted on Burt Lake to document nutrient pollution, erosion, greenbelt health and more.
- A Quagga mussel survey was conducted in the major lakes and rivers of the Cheboygan River watershed. There were no Quagga mussels found during the survey.
- During the summer of 2009, the Watershed Council and West Traverse Township collaborated to survey all shoreline properties in Little Traverse Bay from Nine Mile Point at the southern boundary to Seven Mile Point at the northern end for the invasive plant *Phragmites*. A total of 112 *Phragmites* stands were found along the Bay's shoreline, all but one being of the invasive type.
- Tip of the Mitt Watershed Council staff and interns assisted the Lake Charlevoix Association with their *Phragmites* management efforts.
- Watershed Council staff developed education tools and provided technical assistance to help property owners identify *Phragmites*.
- Continued intensive water quality monitoring of Elk and Skegemog Lakes. The additional water quality monitoring is sponsored by the Elk-Skegemog Lakes Association.
- Completed our 14th consecutive year of springtime water quality monitoring on Walloon Lake with the support of the Walloon Lake Association.
- The Tip of the Mitt Watershed Council celebrated over 25 years of coordinating the Volunteer Lake Monitoring program and over five years of the Volunteer Stream Monitoring program.

2007

Installed two
raingardens in
Lake Charlevoix
watershed

Initiated Boater
Outreach program
to promote
clean boating
practices

2008

Led effort to adopt
the Great Lakes
Compact in Michigan
and nationwide

2009

Watershed Council
celebrates 30th Year

Gail Gruenwald
celebrates 25th year
with the organization

Tip of the Mitt Watershed Council is financially sound as is evident by the following figures from the 2009 independent audit. These financial highlights are a condensed portion of the audit for your information.

Our Endowment Fund investments are now valued at \$901,560. We also have Endowment investments at local Community Foundations valued at \$311,325. These assets provide significant income for our operations each year. At the end of 2009 we had a sizable amount of 'temporarily restricted net assets' which will serve as working capital for 2010 programs and grant projects.

STATEMENT OF FINANCIAL POSITION

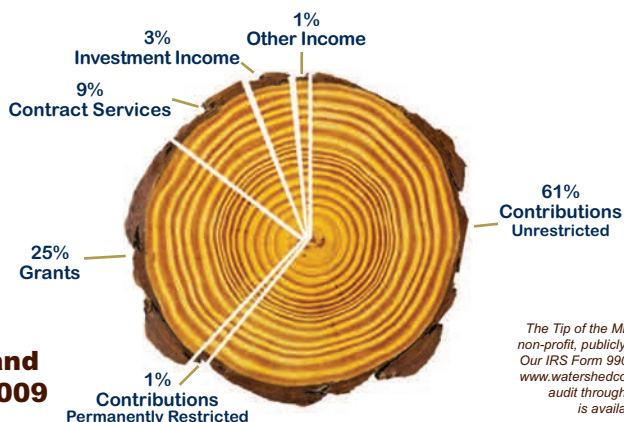
December 31, 2009

Assets

Cash in bank	\$	88,517
Grants and Accounts Receivable		19,911
Inventory		6,591
Prepaid Expenses		17,559
Net Property and Equipment		928,031
Investments at market		901,560
Net assets invested in community foundations		311,325
Total assets	\$	2,271,494

Liabilities and Net Assets

Accounts Payable	\$	6,456
Accrued Expenses		21,510
Funds held as agency endowments		311,325
Total liabilities		339,291
Unrestricted net assets		1,297,467
Temporarily restricted net assets		74,159
Permanently restricted net assets		560,577
Total net assets		1,932,203
Total liabilities and net assets	\$	2,271,494



Revenue and Support 2009

The Tip of the Mitt Watershed Council is a non-profit, publicly accountable organization. Our IRS Form 990 is posted on our website, www.watershedcouncil.org, and a complete, audit through December 31, 2009, is available at our office.

Our net assets grew by \$123,889 this year due to increased support in all income categories. We reduced our management and general and fundraising expenses significantly this year, providing more dollars for our effort to protect our water resources for now and future generations.

We look forward to a very successful 2010 due to conservative budgeting and planning. Thank you for your support of our mission – we couldn't do it without you!

STATEMENT OF ACTIVITIES

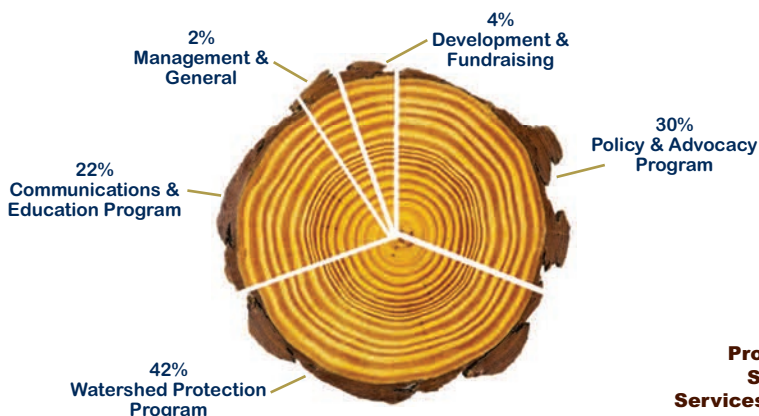
Year ended December 31, 2009

Revenue and support

Contributions – unrestricted	\$	387,230
Contributions – permanently restricted		4,725
Grants		154,451
Contract services		54,413
Investment income		18,285
Other		7,779
Net realized and unrealized gains		134,213
Total revenue and support	\$	761,096

Program and Support Services Expenses

Policy and Advocacy Program	188,178
Watershed Protection Program	263,460
Communications and Education Program	143,295
Management and General	13,922
Development and Fundraising	28,352
Total Expenses	637,207
Increase (decrease) in net assets	123,889
Net Assets, January 1, 2009	1,808,314
Net Assets, December 31, 2009	\$ 1,932,203



**Program and
Supporting
Services Expense
Categories 2009**

Thank you Members and Contributors

We would like to thank our members and contributors for their continued support. 63 Members have given to the Watershed Council for 25 years or more. 411 Members have given to the Watershed Council for 20-24 years and 1,533 members have given for 10-19 years. That's an amazing commitment and we thank you all for your trust and generosity!

Benefactor \$1,000 and up

Mrs. Beulah H. Appleton
The Bank of Northern Michigan
Mrs. Joanne Baruch
Mr. and Mrs. R.E. Benson
Mr. and Mrs. Sigmund Blum
Mr. and Mrs. Norton L. Bretz
Burt Lake Preservation Association
Mr. and Mrs. Thomas H. Carruthers, IV
Mr. and Mrs. David G. Crouse
Peter and Bonni Curran
Michael L. and Rhea A. Dow
Earth Share of Michigan
James W. and Laurie Ford
Ms. Susan S. Ford
Kathleen S. Glass
Jack and Tucker Harris
Dr. John and Joan Hutto
Mrs. John C. Jansing
Mr. and Mrs. Stephen D. Jeffrey
Thomas H. and Patricia L. Jeffs, II
Mr. and Mrs. Murray Kilgour
Don and Jan Kopka
Ed and Janet Mardigian
Mr. and Mrs. Webb F. Martin
Mr. and Mrs. H. Roemer McPhee, III
Marilyn Nichols
The Offield Family Foundation
Mrs. R. E. Olds - Anderson
Mr. and Mrs. Bill Parfet
Mr. and Mrs. David P. Parker
Mr. and Mrs. William A. Petzold
Dr. and Mrs. Albert F. Polk, Jr.
Ms. Ann Pringle
Steve and Brenda Ramsby

Mrs. Thomas A. Reynolds, Jr.
Mr. William H. Rudolph, Jr.
Mr. R. Hamilton Schirmer
Mrs. William F. Souder
Mr. Robert S. Troth
Steve and Connie Vorenkamp
Dr. Edward G. Voss
John and Nancy Waldron
Walloon Lake Association
Geer and Carrie Ellen Wilcox
William A. Fisher, II Family Foundation
Mr. John S. Wilson

Guardian \$500 - \$999

American Spoon Foods, Inc.
Mr. and Mrs. Mark J. Bissell
Dr. and Mrs. Rudrick E. Boucher
Marilyn and Daniel Bower
Mr. William M. Brewster
Mr. and Mrs. Richard Bruening
Michael Cameron
Ralph R. Carruthers
Clannad Foundation
Dole Family Foundation
Elk-Skegemog Lakes Association
Michael J. and Marjorie K. FitzSimons
Mr. Frederick S. Ford, Jr.
Mr. and Mrs. Jeffrey S. Ford

Dr. David M. Gates
Mr. and Mrs. Rusty Gowland
Mr. and Mrs. Richard Gross
Dr. Richard L. Hayes
Mr. and Mrs. Thomas H. Horner
Mr. and Mrs. Hamilton E. James
The Kent Foundation
Ms. Liz Krimendahl
Mr. and Mrs. Edward A. Lunt
Marco, LLC
Mr. and Mrs. Archibald McClure
Vaughn and Harriet McGraw, DDS
Mr. and Mrs. Patrick McNamara
Mullett Lake Area Preservation Society
Mr. and Mrs. Howard W. Newkirk
Mr. and Mrs. G. A. Olofsson, Jr.
Mr. and Mrs. Mark W. Paddock
Mr. and Mrs. Michael D. Parker
Mr. and Mrs. Gregory Peters
Ms. Ruth H. Petzold
Pickerel & Crooked Lakes Association
Dr. G. Michael Pierce
Mr. and Mrs. Fred Rice, III
Ms. Linda S. Robertson
Drs. N. Edward and Patricia Robinson
Mrs. Elizabeth M. Ross
Mr. and Mrs. Peter Schiff
Mr. and Mrs. David Schulingkamp
Mr. William L. Slutz
Dr. Kelley D. Smith
Mr. and Mrs. Thomas Snyder
Mr. and Mrs. Howard A. Ternes
Ward and Eis Gallery
Mr. and Mrs. Douglas A. Warner, III
Dr. and Mrs. Philip Woolcott, Jr.

Our Mission

Tip of the Mitt Watershed Council is the voice for Northern Michigan's waters. We are dedicated to protecting our lakes, streams, wetlands, and ground water through respected advocacy, innovative education, technically sound water quality monitoring, and thorough research. We achieve our mission by empowering others and we believe in the capacity to make a positive difference. We work locally, regionally, and throughout the Great Lakes Basin to achieve our goals.

Key Sponsor**\$300 - \$499**

Dr. and Mrs. Patrick Alguire
 Mike and Holly Anglieri
 Dr. Mark D. Bernan
 Mr. and Mrs. John Bissell
 Mr. and Mrs. H. Hewett Brown
 Joseph and Paula Buckman
 Mr. and Mrs. Noel Bufe
 Mr. and Mrs. David Buzzelli
 Mr. and Mrs. Michael L. Carson
 Mr. and Mrs. Steven Cheyne
 Circuit Controls Corporation
 Mr. and Mrs. Ronald DeYoung
 East Mullett Lake Property Owners Association
 Mr. and Mrs. James H. Everest
 Mr. Robert A. Files
 Mrs. Andrea Fisher, II
 Mr. and Mrs. Daniel P. French
 Dean and Sharon Ginther
 Mr. and Mrs. James P. Gorter
 Wil Cwikiel and Gail Gruenwald
 Harbor Wear
 Mr. Thomas H. Hartzell
 Mr. John O. Hastings
 Mrs. Beverly S. Hoglund
 Mr. and Mrs. William B. Holmes
 Hugh and Joan Hoyt
 Drs. Melanie S. Manary
 and Charles Huebner
 Mr. and Mrs. Patrick R. Hylant, Sr.
 Irish Boat Shop
 Verne and Judy Istock
 Greta Jacobsen
 Mr. Richard J. Jacobson
 Tom and Julie Kennedy
 Mr. and Mrs. Chuck Kneese
 L'Arbre Croche Club
 Edward and Dana Lapekas
 Dr. and Mrs. Hal Lawrence
 John and Cleo Leppien
 Mr. and Mrs. James A. Magnuson
 Mr. and Mrs. Bo Miller
 Joy Kincart and John C. Myers, III
 Nub's Nob Ski Area
 Mr. Kevin J. O'Malley
 Mr. and Mrs. Kent Reynolds
 Mr. and Mrs. Richard M. Ricci
 Mr. and Mrs. Jeffrey G. Ridings
 Mrs. Edward A. Schirmer
 Mrs. Mary M. Schubert
 Dr. and Mrs. Jeffrey C. Shepard
 Craig and Susan Sincock
 Mr. David J. Sparrow
 Mrs. John B. Stafford
 Mr. and Mrs. Christopher J. Steffen
 Mrs. Diane Svigals
 Mrs. Anne G. Symchych
 Linda and Dick Taylor
 Mr. and Mrs. Thomas Titcomb
 Dr. Sarah Umar
 University of Michigan Biological Station
 Michael and Mary Ann Van Lokeren
 Dr. and Mrs. Thomas N. Volle
 The Wege Foundation
 Ms. Jill Whelan
 Evangeline White
 Mr. and Mrs. Samuel H. Williamson
 Mrs. James W. Wingate, Sr.
 Mr. and Mrs. John Winn
 Mrs. Charles S. and Joan Winston, Jr.
 Mr. and Mrs. Thomas W. Wood

Friend**\$100 - \$299**

Dr. and Mrs. Gerald Aben
 Mr. and Mrs. Thomas C. Adamson, Jr.
 Mr. Daniel C. Adler
 Ms. Eliece B. Aiman
 Mrs. William O. Alden, Jr.
 Mr. and Mrs. Bruce Alexander
 Steven and Linda Alexander
 Mr. William R. Allen
 Darrell and Marty Amlin
 Mr. and Mrs. Jack Ammons
 Mr. and Mrs. J.C. Anderson
 Mr. and Mrs. James Anderson
 Richard and Alice Arlen
 Mr. and Mrs. John M. Arnold
 Les and Lori Arnold
 AT & T
 Dr. and Mrs. Jack D Baker
 Dann and Jeanne Balesky
 Mrs. William Barnes, III
 Gretchen Olsen and Steve Barney
 Ms. Katherine L. Barnhart
 Ms. Ann R. Baruch
 Mr. and Mrs. Lowell B. Baughan
 Mr. Walter P. Baughman, III
 Mrs. Hudson Baumes
 Bay View Association
 Bay Winds Federal Credit Union
 Bearcub Outfitters
 Beaver Island Boat Company
 Mr. and Mrs. Dennis Bell
 Mr. Harry Craig Bell
 Mrs. Sylvia A. Bellairs
 Rev. and Mrs. Howard C. Benson
 Mr. and Mrs. John S. Benson
 Dr. and Mrs. Charles E. Besaw
 Kristy and Alan Beyer
 Mr. Frank C. Bielman
 Mr. and Mrs. Michael Bierlein
 Patricia Bierlein
 Mr. and Mrs. George Biltz
 Birchwood Association of Mullett Lake
 Birchwood Construction Company
 Mary Jo Larson and James Bizer
 Black Lake Association
 Mrs. John A. Blanchard, III
 Ron and Kathy Blank
 Mr. and Mrs. L. Douglas Blatt
 Robert S. and Sara J. Blessing
 Jan McNish and Alan Bliss
 Mr. and Mrs. Wayne Blomberg
 Mr. and Mrs. Manfred Bohlke
 Dr. and Mrs. Wilbur J. Boike
 Jim and Marcia Bonahoom
 Mr. Samuel A. Bowman
 Boyne City Ace Hardware
 Boyne Valley Garden Club
 Mr. and Mrs. Brian Brady
 Maureen Radke and Rick Brandi
 William and Treva Breuch
 Hans W. Brieden
 Mr. and Mrs. William R. Brooks
 Mr. and Mrs. Richard Brown, Jr.
 Mr. and Mrs. Richmond F. Brown
 Mr. and Mrs. Willard A. Brown, Jr.
 Mr. and Mrs. Hans W. Bruehl
 Mr. and Mrs. Michael G. Brunett
 Dr. and Mrs. Art Budden
 Mr. and Mrs. William Bugera, Jr.
 Mr. Thomas A. Buhr
 Ian and Sally Bund
 Dan and Leslie Burk
 Mr. and Mrs. Robert F. Burns
 Mr. Thomas J. Busch
 Esther Buskirk
 Mr. and Mrs. James Butcko
 Mr. and Mrs. Joseph A. Butcko
 Susanne B. Buxton

Mr. Robert Bytwerk
 Michelle Palmer and Margaret Cadieux
 Mr. and Mrs. Raymond L. Campbell, Jr.
 Mr. and Mrs. Shepherd S. Campbell
 Mr. and Mrs. Robert J. Cardinal
 Mr. and Mrs. David P. Carlin
 Mrs. Boyd A. Carlson
 Dr. and Mrs. Charles O. Carothers
 Mr. and Mrs. James C. Carroll
 Mr. and Mrs. James Carter
 Mr. and Mrs. Thomas J. Carter
 Mr. and Mrs. Edward Castleberry
 Mr. and Mrs. John Cheney
 John and Janice Cheney
 Mr. William A. Cheney
 Mr. and Mrs. James P. Chiavaras
 John and Kris Churchfield
 City Park Grill
 Mr. and Mrs. James R. Clarke
 Mr. and Mrs. Dale Claudepiere
 Michael and Mary Jane Clayton
 Mr. and Mrs. Terry Clayton
 Mr. and Mrs. William S. Cline
 Mr. Michael Cobb
 Mr. and Mrs. Donald L. Cohen
 Judge and Mrs. Avem Cohn
 Mr. and Mrs. Richard Collie
 Mr. Brian Clay Collins
 Mr. and Mrs. Dave Collins
 Bill and Sue Conner
 Mr. and Mrs. Bruce L. Cook
 Dr. Robert Cooke
 Mr. and Mrs. Ernest S. Cornwell, Jr.
 Morton and Mary Sue Cox, Jr.
 Mr. and Mrs. C. Howard Crane, II
 Dr. and Mrs. George A. Cripps
 Michael and Joanne Cromley
 Mr. and Mrs. J. Richard Crout
 Mrs. Mary Rita Cuddohy
 Mr. and Mrs. Robert M. Culbertson, Jr.
 Mr. and Mrs. Robert Currier, Jr.
 Dr. and Mrs. Allen D. Damschroder
 John and Barbara Danly
 Mr. William K. Davenport
 Mr. and Mrs. Robert M. DeHaven
 Ms. JoAnn C. Dekleva
 Maureen Dekruif
 Mr. and Mrs. Dennis T. Delaney
 Ms. Patricia Dennis
 Mr. and Mrs. William O. DeWitt, Jr.
 Mr. and Mrs. Richard E. Dexter
 Richard A. and Janette F. Dilley
 John and Sharon Dolton
 Drs. James A. and Maureen Doull
 Mr. and Mrs. Kenneth Dowd
 Julie Martinson and Johnna Driscoll
 John and Janet Dunn
 East Burt Lake Association
 Stephen H. and Nancy Eibling
 Ms. Jean E. Elder
 Elk Rapids Garden Club
 Mr. and Mrs. Gordon B. Elliott
 Mr. and Mrs. N. Richard Elliott
 Gerald and Diane Ellman
 Emmet County Lakeshore Association
 Mr. Douglas B. Enck
 Mr. David L. Ericks
 Mr. and Mrs. Michael Esposito
 Mr. and Mrs. Clint Etienne
 Michael C. and Marcia L. Etienne
 Mr. and Mrs. James Fabiano
 Mr. and Mrs. John N. Failey
 Carl J. Strebel and Fred Farage, Jr.
 Mr. and Mrs. James D. Farley
 Ms. Anne Marie Farrell
 Mr. and Mrs. Kevin Farrell
 Michael and Kay Farrimond
 Mr. David L. Findlater
 Mrs. Richard Fink
 Mrs. Barbara J. Fisher

Elise C. Billingsley and Michael Fleming
 Flowers from Sky's the Limit
 Mr. and Mrs. John B. Ford, III
 Janis and Marshall Forsberg
 Mr. and Mrs. Dan Francis
 Ms. Gloria J. Frank
 Mr. and Mrs. Robert R. Frederick
 Dr. and Mrs. Reed K. Freidinger
 Mrs. Lynn Friendly
 Mr. and Mrs. Steven Frisbie
 Mr. and Mrs. William P. Froling
 Martha Lancaster and Doug Fuller
 Mr. and Mrs. Charles H. Gano
 Garden Club of Michigan
 Mr. and Mrs. Gardiner W. Garrard, Jr.
 Mr. Timothy A. Garry
 Bill and Mardy Gast
 Mr. Herbert Gedge
 Mr. and Mrs. James Gerlach
 Mr. and Mrs. Robert Gibson
 Mrs. Zelda Gilman
 Mr. and Mrs. Dale Gloer
 Dr. and Mrs. Charles J. Glueck
 Mr. and Mrs. Richard E. Goff
 Tim and Lynne Goodwin
 Ms. Elaine W. Gordon
 Toni Felter and Ann Gorney
 Mr. and Mrs. Roger Gowdy
 Mr. and Mrs. Ziba Graham, Jr.
 Grain Train Natural Foods Cooperative
 Grandview Beach Association
 Ms. Jane L. Grant
 Mr. and Mrs. Michael E. Grant
 Mrs. Barbara S. Graves
 Great Lakes Lighthouse
 Keepers Association
 Mr. Bruce D. Greer
 Mark and Sue Grimme
 Ms. Barbara S. Grossbauer
 Dr. and Mrs. James A. Gunn
 Ronald and Louise Gurdak
 Charles and Susan Gustafson
 Mr. and Mrs. Michael S. Guy
 Mr. Arthur A. Habel
 Mr. and Mrs. Peter C. Haensel
 Mr. and Mrs. Nelda Hagaman
 Mr. Jeffress B. Haliland
 Mr. and Mrs. Charles R. Hall
 Mrs. L. Lindsey Halstead
 Barbara Shelton and John Hamman
 Mrs. Robert Hampson
 Dr. and Mrs. Steven V. Hansen
 Harbor Springs Excavating
 Mr. and Mrs. Frank M. Harris
 Mr. and Mrs. Norman Harris, III
 Bill and Nancy Harrison
 Mr. Phillip T. Harrison
 Trudy Haussmann and Robert Haugan
 Kem and Mary Hawkins
 Mr. and Mrs. Daniel T. Hayes
 Clare and David Heidtke
 Capt. Walter Herbst
 Heather Hewett
 Hidden Valley Shores Association
 Mrs. Margaret Hiles
 Mr. and Mrs. Niles K. Hill
 Hill, Schroderus & Co.
 Mr. and Mrs. John A. Hillenbrand, II
 Mr. and Mrs. Robert Hingst
 Mrs. Phyllis Hire
 Nancy and Ed Hirschenberger
 Mr. Roger Hodney
 Mr. and Mrs. Paul Hoelderle
 Mr. and Mrs. Dirk Hoffius
 Barbara and Jerome L. Hoganson
 Mr. John W. Holder
 Mr. Charles Hollerith, Jr.
 Mrs. Kathleen Knox Hoogland
 Mrs. Lewis E. Hopkins

Mr. and Mrs. Stephen A. Horn
 Mr. and Mrs. Victor Horton
 Mr. John E. Hoshaw
 Mr. and Mrs. Frank Hoster
 James and Jane Hotchkiss
 Pam Houk
 Mr. and Mrs. Michael D. Huard
 Mr. and Mrs. Clarence W. Hubbell
 Mr. and Mrs. Dillon R. Huder, Jr.
 Mr. and Mrs. Paul Huff
 Huffman Lake Property Owners Association
 Mr. Edward Hulefield
 Mrs. Mary Louise Hunter
 Mr. and Mrs. David Irish
 Mr. and Mrs. Thomas R. Irwin
 Mrs. Timothy R. Ives
 J.P. Morgan Chase Foundation
 Mr. Kirk Jabara
 Mr. and Mrs. Brian Jackman
 Mr. Edward C. Jacobl
 Mr. and Mrs. Henry Jallo
 Mr. and Mrs. W. Joseph Jarecki
 Mrs. Edie S. Johnson
 Mr. Richard Alan Johnson
 Cynthia Jones
 Mr. and Mrs. V. Stewart Jose
 Mrs. David J. Joseph, Jr.
 Mr. and Mrs. Richard E. Jositas
 Karen and Dennis Joy
 Mr. and Mrs. J. Terrill Judd
 Mr. and Mrs. Frederick D. Kaufmann
 Mr. and Mrs. Dennis Kautzmann
 Mr. and Mrs. Terrence Keating
 Mr. and Mrs. M. David Keil
 Joan D. Keller
 Mr. and Mrs. Robert Kersey
 Mr. and Mrs. Robert Kessler
 Mr. and Mrs. Frank Kestler
 Dr. and Mrs. William J. Kibbey
 Mr. and Mrs. Donald F. King, Jr.
 Mr. Charles E. Kirsch
 Mr. and Mrs. Robert P. Knight
 Mr. and Mrs. Thomas Knox
 Mrs. Anne Koontz
 Korthase Flinn Insurance
 & Financial Services
 Mr. and Mrs. John A. Kozacki
 Mr. and Mrs. Richard H. Kraft
 Mrs. Marion E. Krausse
 Ms. Martha Krimendahl
 Ms. Marjorie Kroeger
 Mr. and Mrs. Gregory P. Krueger
 Mr. and Mrs. Elton E. Kruger
 Mrs. Robert J. Kuehn
 Ms. Kathleen F. Kurtz
 Mr. and Mrs. Robert H. Kushler
 Dr. and Mrs. Russell F. LaBeau
 Ms. Karen Rae Lacasse
 Mr. and Mrs. Polk Laffoon, IV
 Mr. and Mrs. James M. LaFleur
 Mr. and Mrs. William S. Laitner
 Dr. John H. Landon
 Mrs. Laurence C. Lang
 Scott and Cynthia Langton
 Mr. and Mrs. Jim Larimer
 Mr. and Mrs. James D. Lark
 Mrs. Ted Lauber
 Mr. Paul Lazar
 Jim and K.C. Leh
 Mr. and Mrs. Jeff Leland
 Mr. and Mrs. Richard A. Lent
 Mr. and Mrs. Raoul LePage
 Mr. and Mrs. Richard D. Lepman
 Shawn and Laura Lilley
 Mr. and Mrs. Rich Lindberg
 Mr. and Mrs. Wayne Lindstrom
 Susan K. Linna
 John and Linda Linnenberg
 Mr. Robert P. Linnenberg

Little Traverse Yacht Club
 Long Point Property Owners Association
 Alan and Christine Loudermilk
 Dr. and Mrs. Benjamin F. Lounsbury, Jr.
 Lower Shore Drive Property
 Owners Association
 Laurie Lowrance
 Mr. and Mrs. Peter M. Lyon
 Mr. and Mrs. Guy O. Mabry
 Mr. and Mrs. William R. MacKay
 Bruce and Barbara Mackey
 Mr. and Mrs. William D. MacPhee
 Jane G. Maddox
 Mrs. Deborah Magennis
 Mr. and Mrs. Chester A. Mahan
 Mr. and Mrs. Ernest H. Mainland
 Mr. and Mrs. Robert G. Maldegen
 Mr. and Mrs. Terence S. Malone
 Mr. and Mrs. Lawrence J. Maltby
 Mr. and Mrs. Curtis Mann
 Mr. and Mrs. Larry Mann
 Dr. and Mrs. Kevin Markham
 Mr. and Mrs. Arthur R. Marshall
 Mr. Bartholomew Martin
 Mr. and Mrs. John W. Martin
 Mr. Neil Marzella
 Mr. and Mrs. Randolph Mateer
 Dr. and Mrs. Eugene Mauch
 Ms. Marjorie E. May
 Mr. and Mrs. Ben R. Mayne, II
 Mr. and Mrs. Edward F. Mayne, Jr.
 Mr. Merrick F. McCarthy, Jr.
 Mr. George P. McDonnell
 Mrs. John H. McFall
 Mr. and Mrs. James C. McGill
 Mr. John T. McKay
 Mr. John W. McKay
 Twink Frey and Jim McKay
 Mr. and Mrs. James K. McKinnon
 Mr. and Mrs. William J. McKinstry
 Mr. and Mrs. John McKnight
 Mr. and Mrs. Michael McManus, Jr.
 Dr. and Mrs. Richard J. McMurray
 Ms. Diane R. McPharlin
 Mrs. Harry W. Mellen
 Mr. and Mrs. Robert V. Messerly
 Mr. and Mrs. Cornelius Meyer
 Mr. and Mrs. Joshua Meyerson
 Peggy Midener
 Mr. and Mrs. Ralph E. Miesel
 Phil and Peggy Millard
 Mrs. Anne W. Miller
 Dr. and Mrs. Michael J. Miller
 Mr. and Mrs. Roger B. Miller
 Mitchell Graphics Inc.
 Mr. and Mrs. Bradley D. Moffatt
 Mary J. Montgomery
 Mrs. Charles W. Morris
 James and Christina Morris
 Cordelia W. Robinson and Grant Morrow
 Kathryn L. Mosier
 Mr. Richard P. Mueller, Jr.
 Mr. and Mrs. William S. Mullen
 Mullett Lake Woods Civic Association
 Mrs. Robert S. Murray
 Loren and Paula J. Musilek
 Patricia Saad and Andrew S. Muth
 Mr. and Mrs. Robert Nakoneczny
 Mr. and Mrs. J. Anthony Naylor
 Mr. and Mrs. David J. Neithercut
 Mr. and Mrs. Carl Nelson, Jr.
 Mrs. Willis J. Nelson
 Mr. and Mrs. William F. Newman
 Mr. and Mrs. Roy J. Nichols
 Mrs. Maxine B. Noll
 Mr. and Mrs. Robert B. Noll
 Mr. and Mrs. Thomas Noneman
 Mr. and Mrs. Rick Norcross, Jr.
 Mrs. Harold D. North, Jr.

George and Susan Notarianni
Mr. and Mrs. Paul F. Nowak
Mr. George M. Nymman
Dr. and Mrs. Gilbert M. O'Gawa
Mr. and Mrs. John F. Ochs
Ms. Karin Offield
Mrs. Betty H. Ostler
Mrs. Cynthia W. Ottaway
Dr. and Mrs. Douglas Otto
The Outfitter of Harbor Springs
Mrs. Donald R. Owen
Mr. Walter I. Owen
Mr. and Mrs. William R. Owen
Mr. and Mrs. Leonard Page
Jim and Barbara Papazian
Paradise Lake Association
Mr. and Mrs. Gerald L. Park
Jim and Janet Parker
Mr. and Mrs. Richard M. Parker
Dave and Jill Patterson
Ray and Lynn Pensinger
Mr. B. Matthew Petcoff
Ms. Janet E. Peters
Karen A. Peters
Mr. and Mrs. Henry Pfeifer
Mr. and Mrs. Scott D. Pickelhaup
Mr. and Mrs. James F. Pierce
Mrs. Ralph E. Piper
Mr. and Mrs. Leonard Pittaway
Mr. and Mrs. James H. Plagens
Ms. Lana Pollack
Polly's Planting and Plucking
Preservation Association of Thayer Lake
Mr. and Mrs. Donald Priest
Mr. and Mrs. Frank Pritchard
Mr. and Mrs. Robert J. Pursel, Jr.
Mr. Paul A. Ransford
Mr. and Mrs. Craig Rapin
Mrs. Margaret Rashid
Claire R. Rasmussen
Raven Hill Discovery Center
Joann Condino and Gene Reck
Ms. Lois Ann Reed
Mr. and Mrs. Borge R. Reimer
Mr. and Mrs. Neil Ressler
Art and Bonnie Rettig
Dr. and Mrs. Craig Reynolds
Dr. and Mrs. Tad J. Richards
Mr. and Mrs. James M. Richardson
Ms. Georgiana E. Richner
Mr. and Mrs. David Roche, III
John and Nancy Rohde
John and Debbie Rohe
Mr. David L. Root
Ms. D. Elaine Rose
Ms. Laura Love Rose
Martha Brownscombe and Jay Rosen
Mr. and Mrs. John S. Ross, Jr.
Mr. and Mrs. John L. Roy
Peter Rubino
Mr. and Mrs. Andries Ruijsenaars
Mrs. Elizabeth T. Russell
Ryde Marine, Inc.
Mrs. Marvin L. Sackett
Ms. Constance Saltonstall
Mr. and Mrs. Robert W. Sandford, Jr.
Mr. and Mrs. John Sant
Mr. and Mrs. Richard N. Sarns
David and Janet Scarrow
Dr. Michael Schulz
Mr. and Mrs. Erwin Schulze
Peter and Helen Schulze
Ms. Suzanne Schulze
Mr. and Mrs. John R. Scott
Mr. and Mrs. David C. Searles
Mr. and Mrs. Mike Sears
Mr. and Mrs. Fred G. Secrest
Ms. Cheryl Sedestrom
Allen and Donna Segrist

Mr. and Mrs. Robert B. Sellers
Gary and Cathy Semer
Mr. Chris A. Shafer
Mr. and Mrs. James Shaheen
Mr. Robert J. Sharer
Mr. and Mrs. Sam Sharp
Mr. and Mrs. George A. Sharpe
Dr. and Mrs. Gary Shaw
Mr. and Mrs. Walter J. Shear, III
Matt and Amy Sheldon
Mr. and Mrs. Lawrence S. Shepard
Dr. and Mrs. William M. Sherk
Mr. and Mrs. Timothy E. Shields
Mrs. Robert L. Shifrin
Dr. and Mrs. David Shneider
Mr. John Shreves
Nancy Monsour and Michael Shubeck
Mr. and Mrs. Richard Shuster
Mr. and Mrs. George A. Shwab, III
Mr. and Mrs. Albert Sickinger
Steve and Sue Sikkema
Hugh Melling and Denise Simon
Six Mile Lake Association
Mr. and Mrs. Hugh Sloan, Jr.
Mr. and Mrs. Ben S. Smith, Jr.
Brice E. and Catherine Smith
Mr. and Mrs. David W. Smith
Dick and Carrie Smith
Mr. and Mrs. George B. Smith
Mr. and Mrs. Roger B. Smith
Mr. and Mrs. Scott Smith
Dr. and Mrs. Stanley R. Smith
Mr. and Mrs. Stephen J. Smith
Mr. W. William Smith
Dr. and Mrs. Ronald D. Snyder
Mr. and Mrs. L. Thomas Soblesky
Mr. and Mrs. William J. Somerville
Julie and Steve Spencer
Dr. and Mrs. Michael D. Spreng
Mrs. George R. Squibb
Paul and Margaret St. Amour
Mr. and Mrs. Stephen Staich
Mr. and Mrs. Thomas E. Stanley
Sally & Kenyon Stebbins
Mr. and Mrs. Floyd W. Steele
David and Linda Steenstra
Mr. and Mrs. Robert A. Stephanoff
Mr. and Mrs. Gale Stephens
Mr. and Mrs. William A. Stetson
Mr. and Mrs. Glenn R. Stevens
Mr. and Mrs. Peter Stewart
Jim and Margot Stoehr
Mr. and Mrs. Donald H. Streett
Mrs. Richard Strickland
Rev. and Mrs. David T. Strong
Mr. and Mrs. William C. Stude, Jr.
Mr. Richard K. Stuebing
Mr. Theodore Styke
Mrs. Ann Swayze
Ms. Nancy Ann Swift
Mrs. Mary S. Tanke
Taylor Rental Center
Mrs. Place D. Tegland
Mr. and Mrs. Richard W. Terrell
Mrs. Jane Thomas
Dr. Eugene Thompson
Mr. and Mrs. Philip R. Thornton
Mr. and Mrs. Joseph Thorpe
Three Lakes Association
Mr. and Mrs. Robert Timyan
Mr. and Mrs. William E. Tomkinson
Mr. and Mrs. David Travis
Dennis and Barb Travis
Mr. and Mrs. David Treglown
Mr. and Mrs. Donald Trout
Mr. and Mrs. John Truckey
Mr. and Mrs. David F. Tuthill
Margaret Tvedten
Amy Tweeten

Rob & Kate Upton
Mr. and Mrs. Jerry Valka
Mr. and Mrs. William Valley
Mr. James R. Valrance
Kay and Kent Van Allen
Mr. and Mrs. William K. Van Allen
Van Dam Custom Boats
Mr. Jerry E. Van Kuiken
Mr. Donald A. Van Suilichem
Mr. Howard VanAntwerp, III
Dr. and Mrs. Ronald VandenBrink
John and Liz Verhoeven
Mr. Roy A. Vincent
Mr. and Mrs. Greg Voelker
Mr. and Mrs. Brice Voran
W. W. Fairbairn and Sons, Inc.
Mr. and Mrs. Clune J. Walsh, III
Mr. Jim Walter
Mr. and Mrs. John Washbush
Mrs. Elmira Weaver
Mr. Richard Weaver
Drs. Jean A. Gaymer and William R. Webb
Dr. and Mrs. James L. Weber
Dr. Joan and Richard Webster
Mr. and Mrs. James R. Weeks, Jr.
Mr. and Mrs. Thomas P. Weinland
Dr. and Mrs. William G. Weiss, Jr.
Mr. and Mrs. Philip R. Welch
Mr. and Mrs. William A. Wenger
Wentworth Builders
Wequetonsing Golf Club
Shirle N. Westwater
Dr. and Mrs. A. Randle White
Mr. and Mrs. Nicholas White
Mr. and Mrs. Michael P. Whitehead
Mrs. Julie C. Whitman
Ms. Dorothy Irene Whitmer
Mr. and Mrs. Larry Wiethorn
Dr. and Mrs. Timothy R. Wilcox
Wildtype Design, Native Plants & Seeds
Mr. and Mrs. John R. Wilhelm
Dr. and Mrs. Harold J. Willens
Mrs. Gussie Williams
Mr. Larry Willis
Mr. and Mrs. James C. Wilson
Jane and David Wilson
Mr. and Mrs. Michael H. Winnell
Mr. and Mrs. John W. Wolf
Mike and Colleen Wolfe
Mr. John B. Woodward
Warren and Linda Woolcott
Col. and Mrs. William A. Wyman
Mr. Boris Yakima
Anna and John Young
Mr. John G. Young
Mr. and Mrs. Frederick D. Ziegel
Mr. and Mrs. Robert L. Zielsdorf

Supporter

\$50 - \$99

Ms. Elizabeth J. Ainsworth
Alden State Bank
Ms. Catherine Alfred
Mr. and Mrs. Donald H. Anderson
Mr. and Mrs. Barry Andrews
Ms. Marion C. Appleby
Mr. and Mrs. Lawrence Arnold
Chuck and Lilo Atkinson
Dr. Catherine M. Baase
Mr. and Mrs. Mark B. Babich
Richard A. Bachhuber, Jr.
Mr. Dale L. Baird
Mr. and Mrs. Richard Baker
Dr. and Mrs. Steven J. Baker
Mr. and Mrs. Roger Baldwin
Mrs. Ruth M. Bandlow
Gary W. and Ann V. Barfknecht
Mr. and Mrs. Gerald R. Barnes

Mr. Josh T. Barnes
 Mrs. Mary Barr
 Mr. and Mrs. David J. Barrett
 Mr. and Mrs. Gregory J. Barrett
 Deborah Durfee Barron
 Mr. and Mrs. James R. Bartlett
 Ms. Vivian Bates
 Gerald and Kathy Batka
 Ms. Vickie Baumann
 Mrs. Hutch Bearce
 Mr. Steven Beard
 Drs. Margaret Brazones and Howard Beck
 Mr. and Mrs. James Beebe
 Mr. and Mrs. John S. Beechler
 Ms. Ruth S. Bennett
 Mr. and Mrs. William S. Bennett
 Mr. and Mrs. Ronald G. Berg
 Mr. and Mrs. Ralph Bergemann
 Mr. and Mrs. David Berles
 Mr. and Mrs. James Berles
 Ms. Sara Berry
 Mr. and Mrs. Erwin P. Bettinghaus
 Mr. and Mrs. Neil T. Bidwell
 Ms. Kathy Biggs
 Mark and Jami Blaauw-Hara
 Lisa and Paul Blanchard
 Ms. Ruth Blanchard
 Mr. and Mrs. Garfield P. Blight
 Mr. and Mrs. Greg Bodker
 Ms. Kathy Bodzick
 Mr. Douglas Boehmer
 Mr. and Mrs. Dennis D. Boettner
 Mr. and Mrs. Joseph Bommarito
 Mr. Eric J. Borcharding
 Mr. and Mrs. W. James Bowers
 Mr. Richard J. Bowman
 Mr. Walker H. Bowman
 Mr. and Mrs. John D. Boyles
 Mrs. Mary E. Boynton
 Mr. Charles J. Brady
 Ms. M. Carol Branch
 Mr. and Mrs. Juris Brants
 Mr. and Mrs. William A. Briggs
 Patricia K. Bristol
 Mr. Michael T. Brode
 Tom Brown and Pepper Bromelmeier
 Mr. Gerald E. Bronson
 Mr. Willis E. Brown
 Mr. Roy T. Browning
 Lindy and Gary Buffington
 Dr. and Mrs. Tim Burandt
 Mr. and Mrs. George Burns
 Mr. and Mrs. Michael J. Buttigieg
 Ms. Joan L. Caldwell
 Mr. and Mrs. Brian Callaghan
 Mr. Lawrence Campbell
 Mr. and Mrs. Howard Canada
 Mr. John W. Carpenter, Jr.
 Mr. and Mrs. Russell Carpenter
 Frank and Eva Carswell
 Mr. and Mrs. James Cartwright
 Mr. and Mrs. Daniel J. CasaSanta
 Mr. and Mrs. Stuart Case
 Mr. and Mrs. Thomas R. Cassel
 Mr. Robert E. Chadwell
 Mr. and Mrs. Scott A. Chamberlin
 Char-Em Appraisal
 Charlevoix Area Garden Club
 Ms. Ann Chastain
 Mr. and Mrs. David Chaveriat
 Cheboygan Long Lake Area Association
 Ms. Diane Cheklich
 Martha B. Cheney
 Russell L. and Ann T. Chevillot
 Anne Morrow and Roger A. Chope
 Ms. Carolyn T. Christy
 Mr. and Mrs. Joseph A. Chrzanoski
 Judge and Mrs. James P. Churchill
 Mr. and Mrs. Randy Clara
 Mr. and Mrs. Goodwin Clark, Jr.
 Mr. and Mrs. Jack R. Clausnitzer
 Richard and Marilyn Cobb
 Mr. and Mrs. Daniel M. Coleman
 Mr. and Mrs. John S. Coleman
 Mr. and Mrs. Elwin Coll
 Columbus Beach Club
 Mr. and Mrs. Robert E. Combs
 Dave and Pamela Comer
 Marshall and Mary Ida Compton
 Mr. and Mrs. W. Dale Compton
 Mr. and Mrs. Kenneth L. Conn
 Mr. John B. Cook
 Greg and Janice Cooper
 Mrs. Charlotte W. Corbett
 Mr. and Mrs. Richard F. Corrington
 Bob Stolt and Anne Couture
 Elizabeth Cowan
 Mr. and Mrs. Randy B. Crim
 Cross Village Shores Association
 Alex Crouse
 Mrs. Virginia Crouse
 Mrs. J.M. Cudlip
 Mr. and Mrs. Peter Cullman
 Mr. and Mrs. Ted Culver
 Mr. and Mrs. Richard E. Cunningham
 D & G Nature's Way Lawn Care
 Mrs. Peter P. Darrow
 Mr. and Mrs. Robert J. Dau
 Mr. and Mrs. William De Roo
 Mr. and Mrs. David H. Deal
 James E. Dearing
 James Schlappi and Lorie DeGrazia
 Mrs. Hyrthol L. DeMeritt
 Mrs. Ann W. Denison
 Mr. and Mrs. Archibald Dettman
 Mr. and Mrs. John F. Dexter, III
 Mr. Stanley Dickinson
 Mr. and Mrs. Ralph S. Dietz
 Mr. and Mrs. John D. DiMartino
 Mrs. Marjory C. Dinwiddie
 Mr. and Mrs. Daniel DiPietro
 Mr. James M. Dixon
 Ms. Jean Z. Donaldson
 Mr. Robert H. Dorst
 Douglas Lake Association - Johannesburg
 Mr. and Mrs. Douglas Drake
 Mary Lee & Mike Duff
 Dr. and Mrs. John H. Duiven
 Ms. Joyce P. Duke
 Mr. and Mrs. Thomas A. Duke
 Mr. and Mrs. Richard Dunning
 Ms. Virginia A. Durand
 Mr. and Mrs. Lynn R. Duryea
 East Jordan Garden Club
 Mr. and Mrs. John D. Edick
 Ms. Eugenia Edmiston
 Mr. and Mrs. Daniel Edson
 Mr. and Mrs. Morgan H. Edwards
 Mr. Robert L. Edwards
 Capt. & Mrs. Alex Ehrlich
 Mr. and Mrs. Richard P. Eide, Jr.
 Mr. Michael S. Elledge
 Mr. and Mrs. James R. Elliott
 Emmet County MSU Extension
 Judith Engelberg
 Ms. Elaine Engelhart
 Randal E. Richner and Eric W. Russell
 Ery and Marshon Erickson
 Mr. and Mrs. James Ernst
 Mr. and Mrs. Charles E. Ervin
 Ms. Helen Evenson
 Mr. Thomas Fairbairn, Sr.
 Carol Farquhar
 Mr. and Mrs. C. Robert Fay
 Suzanne Felt
 Roger and Kathleen Fendt
 Mr. and Mrs. Ward Fenstermaker
 Mr. and Mrs. Patrick Fenton
 Mr. and Mrs. David Fenwick
 Mr. and Mrs. James M. Fergus
 Mr. and Mrs. David Fernelius
 Mr. and Mrs. John A. Ferrari
 Jerome and Bonnie Field
 Mrs. Linda N. Findley
 Mr. and Mrs. Peter Fitzsimons
 Patricia Bernstein and Ray Ford
 Mr. and Mrs. William D. Foren
 Mr. and Mrs. Charles Forsberg
 Jay and Elsie Fort, III
 Ms. Elke J. Frankenberg
 Geoffrey and Gail Frey
 Mr. John Friedly
 Dr. and Mrs. Arthur C. Frock, Jr.
 Mr. and Mrs. William E. Frost
 Mr. and Mrs. Sam Gaither
 Mrs. Virginia E. Gardner
 Arthur and Julia Garipey
 Carol Andreea and James Garland
 Mr. and Mrs. John Garr
 Ms. Sue Gehrke
 Mrs. Wood M. Geist
 Jennifer and Brian Gelb
 Bradley and Sherry Gerlach
 Ms. Elizabeth Gertz-Looze
 Mr. and Mrs. Robert L. Getts
 Howard and Margaret Gilbertson
 Dr. and Mrs. Alan Gillespie
 Austin and Lois Gleason
 Mr. and Mrs. Michael Glusac
 Mr. and Mrs. John L. Goble
 Mr. and Mrs. James R. Grady
 Dr. and Mrs. Rodney J. Grambeau, Jr.
 Grand Traverse Regional
 Community Foundation
 Uri and Patricia Grannis
 Mr. and Mrs. Chester Grant
 Green Lake/Betsie River Association
 Mr. and Mrs. Raymond Greubel
 Roy Griffiths, Jr.
 Ann Petroskey and Betty Grover
 Mr. Darst F. Grund
 Constance J. Grzanka
 Mr. and Mrs. Donald Gschwind
 E. Wray and Kathleen Haack
 Mr. and Mrs. Douglas Hail
 Kathleen Mcadaragh and Paul Hain
 Rev. A. Theodore Halsted
 Mr. and Mrs. James Hammond
 Mr. and Mrs. Thomas F. Hampshire
 Mr. and Mrs. Michael Hanahan
 Henry and Nancy Hanflik
 Ms. Debra Hansen
 Mr. and Mrs. Walter R. Hansen
 Mr. John M. Harrington
 Michael Harrington Family
 Ms. Lucy Hartlove
 Mrs. George Hartman
 James W. and Jessica Haslock
 Mr. and Mrs. Thomas Hassett
 Mr. and Mrs. David Hauser
 Mr. and Mrs. Carl W. Hawkins
 Elise and Rip Hayes
 Ms. Patricia M. Heenan
 Mr. and Mrs. William Heil
 Clyde and Dona Herring
 Mr. and Mrs. Brad Hersey
 Mr. Guy W. Hershberger
 Mr. Mark Hickey
 Dr. Elizabeth M. Holtz Hicks
 Mr. and Mrs. G. P. Johnson Hightower
 Mr. and Mrs. Homer R. Hilner
 Mr. and Mrs. Herbert L. Hodge
 Mr. and Mrs. Gene Hodulik
 Dr. and Mrs. Gene O. Hoerr
 Mrs. Mary Elizabeth Hoff
 Mr. and Mrs. John E. Hoffman
 Mr. Richard Hoffman

Mr. and Mrs. Sidney Holthaus
 Mr. and Mrs. Stanley B. Holzhauer
 Mr. and Mrs. David Hoster, II
 Mr. and Mrs. Thomas C. Hoster
 Mr. and Mrs. James H. Howe, III
 Mr. William Howell
 Mr. and Mrs. John C. Hoyt
 David R. and Patricia L. Hubbard
 Mr. and Mrs. Stephen Huffman
 Mr. R. Craig Hupp
 Ms. Miriam T. Hyde
 IBM Corporation
 Mr. and Mrs. Charles F. Iffland
 Mr. and Mrs. George W. James
 William P. Jamnick
 Cynthia Jean
 Mr. and Mrs. Dennis Jesiek
 Judge and Mrs. Charles Johnson
 Mr. and Mrs. David R. Johnson
 Mr. and Mrs. Roy M. Johnston, Jr.
 Ms. Mary B. Jolliffe
 Dr. and Mrs. John Paul Jones
 Suzanne Jontz
 Mr. and Mrs. John D. Jorgensen
 Jim and Gail Juday
 Mr. and Mrs. Steve Juday
 Mr. James D. Jung
 John and Mary Kafer
 Mr. and Mrs. Robert L. Kahn
 Kathy Karenko
 Mr. and Mrs. John Kaser
 Mr. and Mrs. Alonzo P. Keathley
 Mr. and Mrs. Greg Keith
 Mr. and Mrs. Lawrence D. Kellogg, Jr.
 Mr. and Mrs. Roger Kemper
 Mr. and Mrs. Robert Kendrick
 Mr. and Mrs. J. Todd Kennedy
 Ms. Priscilla Kennedy
 Ronald and Bonnie Kershner
 Brad Kessel
 Marjorie Ziefert and Chuck Kieffer
 Mr. and Mrs. Donald A. Kieliszewski
 Mr. and Mrs. James A. Kight
 Mr. and Mrs. James King
 Mr. and Mrs. Robert J. Kingon
 Emily Meyerson and Harry Kitchen
 Ms. Carolyn Klender
 Mr. James D. Kline
 Jack, Laura and Kateley Klingbeil
 Jane and Arnaldo Kluczkowski
 Mr. and Mrs. Arnold G. Kluge
 Fred and Joyce Koehler
 Mr. John C. Kohler
 Mrs. Euphemia Kondal
 Steve and Kathleen Kopitz
 Mr. and Mrs. Charles Kraegel
 Ms. Donna M. Krall
 Mr. and Mrs. John C. Kromer
 Mr. and Mrs. Richard D. Kudner
 Dr. and Mrs. Paul Kuhlman
 Dr. and Mrs. J. Daniel Kutt
 Lakeshore Beach Association of Topinabee
 Mr. Frank D. Lambert
 Donnie Lancaster
 Mr. J. Jeffrey Lane
 Hertha L. and Claudia Laupmanis
 Mr. and Mrs. Frederick A. Lavery, Jr.
 Mr. and Mrs. Peter F. Lawson
 Mr. and Mrs. Harold A. Leach
 Mr. and Mrs. Patrick J. Ledwidge
 Dr. Timothy Lee
 Mr. and Mrs. Gary Lefkiades
 Mr. and Mrs. Robert C. Leland, Jr.
 Ms. Lucille Lerel
 Mr. Frederick Lesh
 Mr. and Mrs. Martin Letts
 Robert and Margaret Levine
 Ms. Mary C. Lewis
 Mr. and Mrs. Donald C. Leyrer

Ms. Mary D. Liebner
 Ms. Patricia J. Liesik
 Mr. and Mrs. Hall B. Liles, Jr.
 Ms. Barbara Mahar Lincoln
 Walt and Jean Lindsay
 Mr. and Mrs. Charles Lindsey
 Mr. and Mrs. Roy Link
 Barbara Votila and Stephen Little
 Litzenburger Landscape Ltd.
 Dr. and Mrs. Thomas Lloyd, III
 Mr. and Mrs. Gordon Lockyer
 Mr. and Mrs. Richard E. Loeding
 Dr. and Mrs. Edward A. Loniewski
 Ms. Catherine and John Loomis
 Mr. and Mrs. William R. Lovelace
 Ray and Nancy Ludwa
 Ms. Karen S. Lunquist
 Mr. and Mrs. William R. Lynn
 Mr. Robert Lyon
 Mr. and Mrs. Joseph A. Lyons
 Dr. and Mrs. Jack A. Ma Cris
 Mr. and Mrs. James R. Mabee
 Glenda Shepard and Harold J. Macks
 Mr. and Mrs. James S. MacMillan
 Mr. Roland E. Magee
 Mr. and Mrs. Louis J. Mahoney
 Kimberley Maize
 Mr. and Mrs. William M. Makinen
 Ms. Laura Malicki
 Mrs. Marie Maloney
 Dr. and Mrs. Patrick M. Maloney
 Dr. and Mrs. Michael L. Manchester
 Ms. Janet M. Mancinelli
 Mr. and Mrs. Jaan Mannik
 Ms. Laurie Manor
 Ms. Teresa Marcy
 Ron and Clara Marks
 Mr. Tom Marsh
 Mr. Charles Marvin
 Mr. and Mrs. Raymond L. Marx
 Mr. and Mrs. John Mastenbrook
 Mr. Richard T. Masters
 Dr. and Ms. Robert G. May
 Mike and Stephanie McDaniel
 Janice McDiarmid
 Mr. James McDonald
 Jennifer McKay
 Mr. and Mrs. William McLean
 McLean & Eakin Booksellers
 Mr. and Mrs. Noel Melvin
 Mr. and Mrs. Joseph Merritt
 Eva Mesh
 Mrs. Connie Messner
 Mrs. David N. Mikhail
 Mr. and Mrs. Dennis Mikus
 Mrs. Elizabeth H. Miller
 Mr. and Mrs. Randolph J. Miller
 Mrs. Yvonne Miller
 Mr. and Mrs. William S. Mitchell
 Mr. and Mrs. Allen Moberly
 Mr. and Mrs. David C. Monroe
 Mr. and Mrs. Peter Moran
 Mr. and Mrs. Dennis Morse
 Mr. and Mrs. Gregg A. Motter
 Mr. and Mrs. James E. Mottern
 Richard and Virginia Mouch
 Mr. Thomas O. Mueller
 Mr. and Mrs. Thomas F. Murasky
 Robert M. and Mildred L. Murdock
 Mr. and Mrs. Edson W. Murray
 Mrs. Audrey Murland
 Music Makers of Petoskey, Inc.
 Mr. and Mrs. Larry Muzzo
 Mrs. Ray Nelson
 Mr. and Mrs. Daniel J. Nemes
 Mr. and Mrs. Phillip B. Newman, III
 Lisa Nicol
 Mr. and Mrs. James M. Nield
 Mr. and Mrs. James E. North

Thomas and Mary O'Hare
 Michael and Katherine O'Rear
 Mr. and Mrs. John H. Ogden
 Mr. James B. Oliver
 Ms. Marta Olson
 Dr. and Mrs. James J. Osetek
 Mr. and Mrs. Verne H. Osterlund
 Charles Otis
 Mr. and Mrs. Robert J. Otto
 Mr. and Mrs. Donald C. Owen
 Dr. and Mrs. Ted Pall, Jr.
 John and Mary Beth Panganiban
 Ed and Gerri Parks
 Mr. and Mrs. Graham F. Paton
 Dr. and Mrs. Richard D. Patterson, Sr.
 Mrs. Margaretta N. Patterson-Kauffman
 Mr. John D. Paul
 Ms. Virginia S. Peery
 Perennial Garden Club
 Mr. and Mrs. Harry S. Peterson, Jr.
 Mr. and Mrs. Michael Pettibone
 Mr. and Mrs. Charles A. Pettke
 Henry and Dolores Pfeifle, Jr.
 Mr. and Mrs. Joseph J. Pietrangeli
 Mr. Richard B. Platt
 Maud and Hank Plumer
 Mr. and Mrs. Louis G. Pohl
 Point Nipigon Resort Club
 Ken and Shirley Polakowski
 Mr. Alex Pomnichowski
 Mrs. Harry C. Porter
 Ms. Lesley J. Pritchard
 Norm and Judy Probert
 Ms. Elizabeth S. Proulx
 Ira and Ann Purchis
 Dr. and Mrs. Joseph Pysch
 Mr. and Mrs. Robert E. Rankin
 Dr. and Mrs. John Rasmussen
 Mr. and Mrs. Morris R. Rave
 Mr. and Mrs. Gareth Reed
 Ms. Marilyn L. Reed
 Mr. and Mrs. Steve Reh
 Patricia and Russell Reid
 Mr. and Mrs. George J. Reindel, III
 Dr. and Mrs. Robert O. Reisig
 Rex Terrace Association
 Mr. and Mrs. James A. Rice
 Mr. John D. Rich
 Mr. and Mrs. Gilbert Richards
 James and Loretta Richards
 Clifford M. Rigsbee
 Ms. Leanne Rinnac
 Roast & Toast Cafe
 Ms. Irene Roberts
 Ms. Kathleen Robinson
 Rockworks, Inc.
 Joe and Michelle Rohr
 Henry S. and Carol A. Ross
 Marlene Ross
 Mrs. Walter L. Ross, II
 Mr. and Mrs. David J. Rossman
 Patricia and Paul Roush
 Sandra E. Ruffini
 Mrs. Connie Ruggles
 Mr. and Mrs. Joseph Ruicci
 Mr. and Mrs. William G. Rupp
 Mr. William Rutledge
 Hugh and Nancy Ryan
 Lori Lind and Jill Ryan
 Mr. and Mrs. Thomas Ryan
 Penny Sage
 Dr. and Mrs. Richard B. Salzer
 Ms. Mary Jane Samberg
 Dr. and Mrs. Thomas Sarosi
 Mrs. Jean E. Sayre
 Mr. Rob Scarrow
 Drs. Robert Schoenfeld
 Mrs. Barbara Schowalter
 Mr. and Mrs. Edward T. Schreiber

Jack and Marsha Schulman
 Mrs. Evelyn M. Schulte
 Dr. Daniel G. Schultze
 Ms. Joanne Schutz
 Mr. Richard O. Schwab
 Darrell Schwalm
 Mr. and Mrs. Donald J. Schwalm
 Mr. Fred R. Secrest
 Mr. and Mrs. Stephen Secrest
 Mr. William Secrest
 Mr. and Mrs. Paul J. Seehaver
 Mr. and Mrs. Richard L. Segrist
 Neil and Ingrid Sendelbach
 Mr. Milburn L. Shafer
 Dan Shaheen
 Mr. and Mrs. Norman K. Shanahan
 Timothy and Kathleen Shaw
 Michael D. and Kathleen Sheean
 Mr. and Mrs. Ronald D. Shepherd
 Mr. and Mrs. Andrew R. Sherwood
 Mr. and Mrs. Michael C. Sherwood
 Dr. and Mrs. Fred Shipley
 Mr. and Mrs. Sherman C. Shultz
 Dr. and Mrs. Henry L. Singer
 Mr. and Mrs. Andy Siudara
 Dan and Saliann Siwulec
 Mr. and Mrs. Roy H. Sjoberg
 Ms. Sara E. Smith
 Mr. and Mrs. Watson Smith
 Mr. Jacob L. Snider
 Ms. JoAnne Snyder
 Mr. and Mrs. Tom Soelter
 Louise Somes
 Mrs. Robert Songe
 Mrs. Donald P. Spalding
 Mr. and Mrs. William F. Spengler
 Mr. and Mrs. W. James Sprow
 Nancy Squires
 Mr. and Mrs. Larry Sroka
 Mr. and Mrs. Joseph A. Stafford
 Mr. and Mrs. John D. Starkel
 Mr. Winston L. Stebbins
 Ms. Elaine Burr Stienon
 Mr. and Mrs. Leigh A. Stocking, Jr.
 Mr. and Mrs. David Stone
 Mr. and Mrs. Gary Street
 Mr. and Mrs. Thomas Streeter
 Mr. and Mrs. Daniel W. Sturt
 Superior Groundcover, Inc.
 Mr. and Mrs. R. Michael Supernault
 Mr. and Mrs. James N. Sutherland
 Mr. and Mrs. Kenneth Swadling
 Sally and Bill Swanson
 Mr. and Mrs. Royal J. Synwolt
 Kristy Szczesny
 Mr. and Mrs. Lawrence R. Terman
 Mr. and Mrs. Thomas M. Teske
 Mr. and Mrs. Robert F. Thomas
 Mr. and Mrs. James E. Tollar
 Ms. Marana Tost
 Mr. and Mrs. Bill Tripp
 Mr. and Mrs. J. Jordan Truman
 Mr. and Mrs. Gregg Tulley
 Mr. and Mrs. Michael L. Turnbull
 Mr. and Mrs. Ralph W. Turner
 Mr. and Mrs. David Turowski
 Twin Lakes Association
 Mr. and Mrs. Henry J. Van Dusen, III
 Mr. and Mrs. Archie A. Van Elslander
 Ms. Ruth Van Lanen
 Mr. and Mrs. Douglas P. Vance
 Ms. Roberta L. VanderBreggen
 Dr. and Mrs. Frederik S. VanReesema
 Dr. and Mrs. Daniel J. Verbung
 Village Graphics, Inc.
 Mr. Richard & Lynn Vincent
 Mr. Denise Plakmeyer and Jack Vliet
 Mr. and Mrs. Ronald Voigt
 Mr. and Mrs. Thomas L. Walenta

Kent and Suzanne Walker
 Mr. William T. Walker
 Mr. and Mrs. George Wanhainen
 Mr. and Mrs. John P. Ward
 Mr. and Mrs. Ronald L. Warrs
 Hal Washburn, Jr.
 Mr. and Mrs. James R. Waterson
 Jerry and Joyce Watters
 Dr. and Mrs. R. Randolph Weast
 Mr. and Mrs. Donald Weber
 Dr. and Mrs. Paul A. Weber
 Mrs. Dolores Wehrenberg
 Mr. and Mrs. Daniel G. Wells
 Mr. and Mrs. William H. Weltyk
 Jeff and Candice Wendling
 Mr. and Mrs. Byron L. West
 Mr. and Mrs. Edson A. Whipple
 Mr. and Mrs. Robert Whitesel
 Mr. and Mrs. Mark Wibel
 Mr. and Mrs. John W. Wickett
 Mr. and Mrs. Chris Widmar
 Mrs. William Wieland
 Margaret Daniels and Rick A. Wiles
 Mr. and Mrs. Brad Wilkins
 Ms. Mary Jane Williams
 Mr. and Mrs. Thomas E. Williams, Jr.
 Mrs. Christine Willis
 Mr. and Mrs. Patrick R. Willnow
 Mr. David R. Wilson
 Mr. and Mrs. Gordon Wilson
 Joan Wilson
 Mr. and Mrs. Steve Winchell
 Ms. Suzanne Wingate
 Jennifer and Todd C. Winnell
 Mrs. June Wirth-Grundy
 Mr. and Mrs. John W. Woody, Jr.
 Alan Young
 Dr. Beverly Zelt
 Mrs. Eleanor J. Zent
 Mr. and Mrs. Carl Zimmer
 Mr. and Mrs. Howard Zimmerman
 Mr. and Mrs. Douglas Zoerhoff
 Mr. and Mrs. Vasco Zucchiatti
 Mr. and Mrs. George Zuidema

Subscriber

\$35 - \$49

Dr. and Mrs. Thomas V. Abowd
 Mr. Sam Affendikis
 Mr. and Mrs. Frederick G. Ager
 Mr. and Mrs. Danny R. Albert
 Mr. and Mrs. Lee Albrecht
 Mary L. Johnson and Ken Allen
 Mr. and Mrs. Richard E. Allen
 Mr. and Mrs. William Allen
 Mr. and Mrs. Alvin J. Amschler
 Mr. and Mrs. Richard Anderson
 Andrew Kan Travel Service, Inc.
 Mr. James K. Angell
 Mr. and Mrs. Edward R. Angove
 Mr. and Mrs. John Archibale
 Mr. John E. Arens
 Ms. Linda Badalucco
 Mr. and Mrs. Walter Baker
 Mr. and Mrs. Greg Bald
 Mr. and Mrs. John J. Baldwin
 Ms. Maryanna Baldwin
 Mr. James W. Baliko
 James F. Barker
 Mr. and Mrs. Mark A. Baun
 Dr. and Mrs. James E. Beard
 Mr. and Mrs. Roger E. Beaverson
 Mr. and Mrs. Fred Becker
 Tom and Marilyn Beerman
 Mr. and Mrs. Ronald Beitel
 David Bellingham
 Rose and Leo Bemben
 Gerald E. and Jean E. Berriman

Irvin and Tracy Bieser, Jr.
 Ms. Karen Biestek
 Mr. and Mrs. Howard E. Biglin
 Bike Fix Cycling Center
 Mr. and Mrs. William A. Bingham
 Mrs. Wilma L. Blackmore
 Mr. and Mrs. Carl Bloom
 Mr. and Mrs. Ed Boan
 Mr. and Mrs. John R. Bodt
 Larry and Joanne Boerman
 Mr. and Mrs. Robert H. Bokram
 Christine Bommarito
 Mr. and Mrs. Eugene P. Bonzack
 Dr. and Mrs. Kenneth Borovich
 Mr. and Mrs. William E. Boruta
 Mr. John B. Bowers
 Mrs. Jeanne Boyd
 Mr. and Mrs. Kenneth W. Brancheau, Sr.
 Ms. Margaret D. Bray
 Dr. and Mrs. James I. Breckenfeld
 Mr. and Mrs. Donald Breed
 Mr. and Mrs. Gerald Breen
 Mr. and Mrs. Douglas Brenton
 Mr. and Mrs. Dan C. Brower
 Pamela O'Malley and Bruce Brown
 Mrs. Cheryl R. Brunner
 Dr. and Mrs. Donald K. Bryan
 Mr. and Mrs. John Bubak
 Mr. William Bulger
 John and Barbara Burgdorfer
 Mr. Terry Burge
 Dr. Judee Burgoon
 Ms. Nancy Burk
 Mr. and Mrs. James Burke
 Mr. and Mrs. Kenneth Burnett
 Burt Lake Marina
 Mr. and Mrs. Otto Busard
 Mrs. Elaine Couture Butts
 Mr. Thomas J. Cadwalader, Jr.
 Mr. and Mrs. Burke Campbell
 Ms. Carol A. Campbell
 Mr. and Mrs. Robert F. Carlson
 Mrs. Jane M. Carpenter
 John and Nona Carr
 Mrs. Mary Carter
 Mr. Martin Casey, III
 Mrs. Jan Cavanaugh
 Mr. and Mrs. David A. Chambers
 Ms. Laura Marie Chaney
 Mr. and Mrs. Robert C. Charlton
 Mr. and Mrs. Thomas R. Chernak
 Mr. John W. Childe, Jr.
 Mr. and Mrs. Peter D. Chimner
 Mr. and Mrs. Donald Chmielewski
 Mr. and Mrs. David J. Churchill
 Mr. and Mrs. Kevin Clarke
 Michael Clayton
 Mr. Dennis Coan
 Mrs. John R. Coble
 Nick and Virginia Colucci
 Mr. and Mrs. James L. Compere
 Martha Condit
 Michael and Marcey Conn
 Mr. and Mrs. Robert Constantine
 Mr. and Mrs. Gary K. Cooper
 Mr. and Mrs. Frank Copeland
 Mr. and Mrs. Mike Costa
 Mr. and Mrs. Charles T. Cousino
 Ms. Elva O. Cowell
 DeWayne and Joan Cox
 Mrs. Jack H. Crahan
 Mr. and Mrs. Donald Criner
 Mr. and Mrs. Kenneth A. Crockett, Jr.
 Kevin Cronk
 Mr. David R. Crothers
 Jay Crouse
 Mr. William R. Crowe
 Richard L. and Catherine E. Cunningham, Jr.
 Ms. Theresa Custodio

Mr. and Mrs. Wilfred J. Cwikiel
 Roger C. and Anette J. Cyr
 Mr. and Mrs. J. Dewey Daane
 Marian Daneff
 Mr. and Mrs. Dennis R. Darst
 Mr. and Mrs. John R. Davies
 Rev. and Mrs. Robert F. Davis
 Mr. and Mrs. Kurt Davish
 Mr. and Mrs. Dennis P. Debroka
 Mr. and Mrs. John J. Decarli
 Mr. and Mrs. Dale Dekraker
 Mr. and Mrs. Clifford E. Denay, Jr.
 Mr. and Mrs. Richard Dicker
 Mr. and Mrs. Thomas Diesing
 Mr. Joseph C. Dilger
 Mr. Victor Dinsmoore
 Ms. Sandi DiSante
 Mr. and Mrs. Arthur R. Disbrow
 Mr. and Mrs. Charles F. Doane, Jr.
 Mr. and Mrs. Gordon L. Dolton
 Ms. Joan S. Doman
 Elizabeth Domann
 Mr. and Mrs. Gary L. Doty
 Mr. and Mrs. John Doty
 Mr. and Mrs. Richard Dragoo
 Dr. and Mrs. Gerald A. Drake
 Mr. and Mrs. Charles W. Drouillard
 Mr. and Mrs. Richard Dueueke
 Mr. and Mrs. Kelly D. Duff
 Dr. and Mrs. Frank K. Duiven
 Mrs. Bernard N. Dukat
 David and Anabel Dwyer
 Mr. and Mrs. James R. Dwyer
 Mrs. John W. Dyer
 Mr. and Mrs. J. Chester Ebling
 Mr. and Mrs. Walter R. Ebling
 Mr. and Mrs. Mark J. Eby
 Mr. and Mrs. David Egger
 Mr. and Mrs. Theodore W. Ehlert
 Mr. and Mrs. Charles Elliott
 Mr. and Mrs. Clark Elwood
 Mr. and Mrs. Stephen J. Enck
 Ms. Maureen Engle
 Mr. and Mrs. Jack Engledow
 Mr. and Mrs. Edward L. Epstein
 Mr. and Mrs. Daniel P. Ernst
 Mr. and Mrs. Lynn Evans
 Mr. and Mrs. Robert W. Evans
 Mr. and Mrs. J. M. Ewing
 Mr. and Mrs. Charles L. Fairbanks
 Mrs. Ronald J. Fairbanks
 Dennis Faurot
 Ms. Jane C. Faust
 Mr. and Mrs. Dennis L. Fear
 Mr. and Mrs. Neil E. Ferguson
 Audrey M. Fick
 Mr. and Mrs. Thomas A. Fielder
 Mr. and Mrs. Dan Fischer
 Jim and Judy Flanagan
 Mr. and Mrs. Ted Flynn
 Mr. and Mrs. Robert C. Ford, II
 Mr. Richard D. Foster
 Mr. and Mrs. Robert B. Foster
 Mr. and Mrs. Anthony A. Foust
 Kenneth Freeman
 Mr. and Mrs. Arthur E. Frentz
 Friends of the Boyne River
 George and Maiga Friess
 Mr. and Mrs. Steve Frisbee
 Jane Schneider and Dennis Fulbright
 Ed and Rita Furdak
 Mr. William T. Galanek
 Mr. and Mrs. Dennis P. Gallagher
 Mrs. William Garrock
 Mr. and Mrs. Leonard J. Gayeski
 GE Foundation
 Mr. and Mrs. Kurt Gearhiser
 Mr. and Mrs. Wallace Gemignani
 Mr. and Mrs. Robert Gerlach

Mr. Joseph R. Gilmore
 Mr. and Mrs. Leonard Ginop
 Mr. William F. Glass
 Mr. and Mrs. Richard Goldstein
 Mrs. Mary B. Gonne
 Mr. and Mrs. Shelby R. Goss
 Mr. and Mrs. Robert Grabowski
 Lois K. Graham
 Mr. and Mrs. Thomas E. Graham, Jr.
 Mr. and Mrs. Frank Granstra
 Drs. Donna and Jeffrey Green
 Drs. David and Sheila Gelman Greenblatt
 Francis and Ardis Greenwalt
 Dwayne and Carole Griffin
 Mr. William F. Grubb
 Sharon Gulau
 Donald E. and Grace A. Guthrie
 Dr. Gordon Guyer
 Mr. and Mrs. George Haddad
 Mrs. Kate Haddox
 Mr. and Mrs. Paul E. Hagerty
 Ms. Phyllis Haight
 Mr. and Mrs. Fred H. Hall
 Mr. and Mrs. Kevin O. Hall
 Mr. and Mrs. Robert Hall
 Ms. Mary Hammond
 Mr. and Mrs. Ted Hammond
 Mr. Billy E. Hanel
 Mr. and Mrs. Joseph L. Hardig, Jr.
 Mr. and Mrs. Hord Hardin, II
 Mr. and Mrs. Lyle W. Harper
 Mr. and Mrs. Edwin Harris
 Mr. and Mrs. Robert E. Hartman
 Mr. and Mrs. William C. Hartwig
 Mrs. Dorothy Hayes
 Mr. James W. Hayes
 Mrs. Harold H. Haywood
 Mrs. Loretta Helfka
 Ms. Valerie B. Hendricks
 Mr. and Mrs. Joseph P. Henley
 Mr. Richard C. Hermann
 Mr. and Mrs. Wallace Hibbard
 Mrs. Laura Higgins
 Dr. and Mrs. Hashem M. Hilal
 Art and Carol Hoadley
 Mr. and Mrs. Stephen Hoadley
 Ms. Margo L. Hodder
 Mr. and Mrs. Thomas E. Hogan
 Richard and Bernice Hopkins
 Mr. Vern Edward Horn
 Mr. and Mrs. Wesley Hovey
 Mr. and Mrs. Roger W. Howell
 Stephen and Karen Hume
 Mrs. Michael J. Huminski
 Ms. Joyce Hutto
 Mr. and Mrs. Charles S. Hyatt
 June and Scott Hymas
 Mr. and Mrs. Charles Impellizzeri
 Indian River Kiwanis Club
 Intermediate Lake Association
 Mr. and Mrs. Harry G. Janis
 Mr. and Mrs. Paul Janness
 Ms. Kitty Janowiak
 Steve and Karen Jarema
 Ms. Virginia Jarrold
 Mrs. Margaret B. Johnson
 Mrs. Mariou Johnson
 Mr. and Mrs. Max Johnson, Jr.
 Mr. Patrick T. Johnson
 Mr. and Mrs. Richard Johnson
 Patricia Jones
 Mr. and Mrs. Victor R. Jose
 Karl and Marian Jurries
 Mr. and Mrs. Don L. Kaegi
 Mr. and Mrs. Jon Karsten
 Mr. and Mrs. Kevin Kaye
 Drs. Andris and Irene Kazmers
 Robert and Marjory Keeler
 Mr. and Mrs. Thomas Kehn

Mr. and Mrs. Richard Kellogg
 John T. Kelly, III
 William and Kirsten Kelly
 Mr. Edgar F. Kettler
 Mr. and Mrs. Walter J. Kidd
 Mr. and Mrs. Thomas R. Kiessel
 Mr. and Mrs. Gerald King
 Patricia Kishigo
 Stewart and Susan Kissinger
 Ms. Anne Klapheke
 Mr. and Mrs. Robert J. Klein
 Mr. Walter C. Knowles
 Mr. James A. Kozicki
 Mr. and Mrs. Ronald Kraus
 Mr. and Mrs. Donald A. Krencicki
 Susan Mohr and Ken Krentz
 Mr. and Mrs. Frederick E. Kruger
 Mr. and Mrs. Donald F. Krussell
 Mr. and Mrs. John Kurkjian
 Mr. and Mrs. James D. Laarman
 Mr. and Mrs. Robert LaHaie
 Mr. and Mrs. John B. Lake
 Lake Charlevoix Association
 Mr. and Mrs. Keith L. Lamkin
 Mr. and Mrs. Charles E. Lampert
 George and Shirley Landon
 Ms. Cathy Lamer
 Mr. and Mrs. S. E. Laughlin
 Mrs. David W. Lee
 Mr. Clifford S. Leestma
 Mr. and Mrs. Neil Leighton
 Mr. Harold P. Leitz
 Helen Leitz
 Mr. and Mrs. Larry Levensgood
 Mrs. Charles W. Lewis
 Mr. and Mrs. Robert J. Lewis
 Mr. and Mrs. Richard W. Lindner
 Matt and Tonia Lindsay
 Ms. Mary Lirones
 Mr. and Mrs. Robert Litzer
 The Lodge
 Robert and Becky Logee
 Mr. and Mrs. Raymond C. Lope
 Mr. William Lorne
 June Ludwig
 Dr. Carl Luepnitz
 Dr. Robert C. Lum
 Mr. Charles Lundstrom
 Mr. Frank Luxton
 Mr. and Mrs. Richard Lynch
 Mr. and Mrs. Albert W. Maas
 Mr. and Mrs. Bevars D. Mabry
 Bruce MacArthur
 Mr. and Mrs. Robert A. Mackay
 Mr. Gary C. Malone
 Donna Coalier and Rick Mancuso
 Mr. and Mrs. Mark Mandryk
 Mr. Thomas J. Manning
 Mrs. Henry E. Manturuk
 Mr. John W. Marshall
 Mr. and Mrs. Robert L. Marshall
 Mr. and Mrs. Max Martin
 Mr. and Mrs. William T. Mate
 Mr. and Mrs. Richard E. Matthews
 Mr. and Mrs. Patrick K. May
 Jim and Judy Mayo
 Mr. and Mrs. James Mc Mahon, III
 Mrs. Lucy McArthur
 Isabelle McCarthy
 Mr. and Mrs. John E. McCarthy
 Mr. Robert McClean
 Mr. and Mrs. Edward McClutchey
 Mr. and Mrs. William L. McKillip, Sr.
 Mr. and Mrs. Charles E. McKinley
 Mr. and Mrs. Robert W. McLean
 Mr. and Mrs. Jerry A. McLellan
 Mr. John McMeekin
 Dr. Fred McMurray
 David McVicker

Mr. and Mrs. Kay R. Melvin
 Mr. and Mrs. Bruce Milen
 Jess and Pam Miller
 Mr. and Mrs. Ron Miller
 Mr. and Mrs. Michael T. Minasian
 Mr. and Mrs. Dan Mishler
 Anand Mishra
 Henry and Margaret Moczul
 BJ Lipscomb Mogg
 Ms. Donna Moreno
 Robert and Mary Morgridge
 Mr. and Mrs. Sidney Moss
 Ms. Robin Moyer
 Mr. Arthur F. Mullen
 Mr. and Mrs. Thomas Mullin
 Mr. and Mrs. Robert A. Muncie
 Dr. and Mrs. Charles A. Murray
 Mr. and Mrs. Gerald C. Nelson
 Dr. and Mrs. Phil Nelson
 Sherry Nelson
 Mr. and Mrs. Franz Neubrecht
 Mr. and Mrs. Kenneth J. Neumann
 Mr. Charles J. Newling
 Mr. and Mrs. Bendt C. Nielsen
 Mr. and Mrs. James W. Nihls
 Mr. Brian Nolan
 Mrs. Mildred C. Nolan
 Northern Michigan Master
 Gardener Association
 Mr. and Mrs. Donald A. Nummer
 Carol A. O'Keefe
 Jack and Margaret O'Malley
 Ms. Lucia Scully Oelz
 Ms. Jean M. Ohlson
 Mr. and Mrs. John J. Olszewski
 Mr. Woodard D. Openo
 Carole Orth
 Mr. and Mrs. Donald K. Osborne
 Mr. Gerhard F. Osterbeck
 Mr. and Mrs. Rodney Ostrum
 Mr. and Mrs. James Ott
 Norman C. and Charlotte Otto
 Dr. and Mrs. Gerard Ozanne
 Mr. and Mrs. Lloyd S. Pardee
 Mr. and Mrs. Lee H. Parrish
 Mr. and Mrs. Paul J. Patchen, II
 Butch and Shelley Paulsen
 Mr. and Mrs. William Pavelek
 Mr. and Mrs. John Roy Peak, III
 Mr. and Mrs. Charles Pemberton
 Mr. and Mrs. John B. Penniman
 John and Lorayn Perkins
 Mr. James Petcoff
 Ms. Eliza Peterman
 Ms. Kathleen Anne Peterson
 Mr. and Mrs. Gene Pezon
 Ms. Sarah Philippon
 Pickerel Lake Association - Botsford
 Mr. and Mrs. John L. Pickering
 Ms. Jean A. Pickett
 Mr. John L. Picton
 Mr. and Mrs. Ronald Pigott
 Mr. and Mrs. Robert D. Piotraczk
 Ms. Kathleen S. Pistono
 Mr. and Mrs. Daniel Plasencia
 Mr. Eugene T. Plite
 Mr. and Mrs. Keith H. Podob
 Mr. and Mrs. A. Robert Poggi
 Mr. and Mrs. Stanley N. Pontius
 Mr. and Mrs. William J. Prall
 Ms. Mary C. Pratt
 Kevin and Dianna Prediger
 Mr. Marty P. Prokopy
 Ms. Elizabeth E. Proulx
 Mr. and Mrs. Max R. Putters
 Mr. and Mrs. Mitch Quaine
 Mr. and Mrs. Paul Quenneville
 Rev. and Mrs. Richard C. Quinlan
 Linda and Fred Rachwitz

Mr. and Mrs. James M. Radabaugh
 Ms. Carol Raitzer
 Mr. and Mrs. Louis L. Rauh
 Re/Max of Elk Rapids
 Ms. Christine G. Redman
 Mrs. Mary Redman
 Mr. and Mrs. Donald Reh
 Dr. and Mrs. Gary C. Reid
 Mr. and Mrs. Jerry Reis
 Mr. and Mrs. Conrad S. Reiter
 Mr. and Mrs. Donald A. Renton
 Mr. Roger O. Rich
 Mr. and Mrs. James Ries
 Mr. and Mrs. George G. Rinder
 Mr. and Mrs. Richard E. Rinker
 Mr. Jack L. Ripstra
 Mr. and Mrs. Donald Ritter
 Mr. and Mrs. Stephen L. Ritter
 Alana Haley and Kent Robbins
 Mr. and Mrs. Michael J. Root
 Mr. and Mrs. Earl Rorick, Jr.
 Dr. and Mrs. Jay T. Rorick, Jr.
 Mr. and Mrs. Paul H. Ross
 Mr. and Mrs. Robert A. Ross
 Mrs. Edward G. Rothe
 Mr. and Mrs. Paul R. Runyan
 Mr. and Mrs. Daniel R. Rupp
 Mr. Robert L. Rupp
 Mr. and Mrs. Richard L. Rust
 Mr. and Mrs. James E. Ryan
 Mr. and Mrs. Lawrence Rychlick
 Andrew and Jo Sahara
 Mr. John C. Sandmeyer
 Mr. and Mrs. Louis Sanford
 Mr. and Mrs. John N. Santeiu, Jr.
 Mr. and Mrs. Don Sargent
 Mr. and Mrs. Gerald Saxton
 Christine Ludwig and Paul M. Schaub
 Mr. and Mrs. Rex Schlaybaugh, Jr.
 Mr. and Mrs. E. Jeffrey Schoeny
 Stefan Scholl
 Mrs. David Schupp
 Mr. R. Oliver Schwab, Jr.
 Mr. and Mrs. Brett A. Seabury
 Mr. and Mrs. Thomas Sebold
 Seedums Garden Club
 Mr. and Mrs. Clifford J. Seeger
 Erik and Carol Serr
 Mr. and Mrs. Dale Shaw
 Mr. and Mrs. Charles L. Shearer
 Mr. and Mrs. Ted Sielski
 Heather Siersma
 Bob and Diane Simancek
 Mr. and Mrs. David Sinacola
 Lena Sinacola
 Dr. C. Alan Slagle
 Mr. and Mrs. Dan Slanec
 Mr. Bud Slingerlend
 Mrs. Frederick J. Smith
 Mr. and Mrs. Jay H. Smith
 Mr. and Mrs. Mark S. Smith
 Mr. and Mrs. Melvyn L. Smith
 Scott Smith Carpentry Service
 Mary Michelsen and Lois Snyder
 Mrs. William R. Snyder
 Mr. and Mrs. William R. Solms
 Mr. Stephan J. Speth
 Mrs. Warren M. Spreng, Jr.
 Dr. Doug Springborn
 Mr. and Mrs. Donald Spurr
 Mr. and Mrs. Peter J. Staelens
 Mr. and Mrs. Paul L. Staley
 Mr. and Mrs. Kendall Stanley
 Ms. Jane Stearns
 Mr. and Mrs. George M. Stefanos
 Mr. and Mrs. George Stemkoski
 Mr. and Mrs. Anthony J. Stemsky
 Carolyn Stevens
 Dr. and Mrs. David Stevens

George and Jan Stewart
 Mr. and Mrs. Gig Stewart
 Ms. Marguerite Stokes
 Mr. and Mrs. Roger Stoppel
 Ms. Marilyn Strader
 Ms. Elizabeth Strawbridge
 Mr. and Mrs. Stephen S. Strickland
 Mr. and Mrs. Richard Strom
 Mr. and Mrs. Ed Strzelinski
 Bryan Rogne and Jacqueline Stubner
 Ms. Esther W.P. Summers
 Ronald Svatora
 Mr. and Mrs. Joseph Swager
 Mr. Timothy V. Swanson
 Marti and Tom Swiger
 Cindy Okerlund and Matthew Tamm
 Mr. and Mrs. David R. Tanski
 Roy and Carol Tassava
 Ms. Catherine Ann Taylor
 Mrs. Catherine Teal
 Mrs. Eleanor Templin
 David and Jeanne Tennent
 Mr. and Mrs. Momcilo Teodosic
 Al and Jeanne Terry
 Mr. and Mrs. C. Thomas Terry
 Dr. and Mrs. Edward Thomas, Jr.
 Dr. Victor J. Thomas
 Mr. Richard E. Tindall
 Joanne M. Tracey
 Ms. Geraldine M. Tracy
 Mr. James Trimpe, Sr.
 Jean Holther and Scott Trowbridge
 Mr. Frederick J. Trudo
 Mr. and Mrs. Ronald H. Tschudy
 Martin and Suzanne Tuck
 Dr. and Mrs. Donald L. Tuckey
 Mr. and Mrs. Norin W. Tymes
 Mr. and Mrs. Roger S. and Suzanne Tyrrell
 Mr. Thomas V. Ulrich
 Mr. and Mrs. John L. Vala
 Mrs. Annette van der Schalie
 Mr. and Mrs. Gordon Van Wieren
 Mr. and Mrs. Paul J. Varga
 Carole Vial
 Mr. and Mrs. John Vrondran
 Mrs. Janet Vuillemot
 Mr. and Mrs. R. J. and Nancy H. Waddell
 Mr. and Mrs. Robert Waldie
 Mr. and Mrs. Douglas J. Walli
 Mr. and Mrs. Richard J. Warns
 Mr. and Mrs. John R. Webber
 Ms. Barbara G. Weber
 Mr. and Mrs. Greg Webster
 Mr. Stephen D. Webster
 Drs. Sue and Mark Weiss
 Mr. Richard R. Weller
 Ms. Paula L. Welmers
 Kathleen Friesen and Peter Westcott
 Hilma and Elmer Whipple
 Mr. and Mrs. Robert B. Wikstrom
 Jim and Ann Wilderom
 Wildwood Property Owners and Club
 Ms. Charlotte E. Wilk
 Mr. Rex O. Wilkins
 Mrs. Ima Williams
 Mr. Steven B. Wilson
 Mr. and Mrs. Gary M. Winkler
 Mr. Hugh D. Winnell
 Mr. and Mrs. William Winslow
 Mr. and Mrs. Carl Winters
 Mr. Alfred W. Wishart, Jr.
 Mr. Roman C. Wojtowicz
 Mr. and Mrs. Robert Wolf
 Mr. and Mrs. Frederick B. Woodbridge
 Mr. and Mrs. Carl T. Woosley
 Mr. and Mrs. Robert Woodstra
 Mr. and Mrs. Frank L. Wright
 Ms. Joan F. Wright
 Sandy Schreck and Carson Wright

Mrs. Carole Wuerfel
Mr. and Mrs. John R. Zahnow
Mr. and Mrs. Lee E. Zeunen
Mr. and Mrs. John H. Zobus
Mr. and Mrs. Ivan Zuieback

Sustainer

\$1 - \$34

Mr. and Mrs. Dwain Abramowski
Mr. and Mrs. Vaughn Adams
John and Raechel Alberts
Ms. Shirley V. Ambrose
Ms. Carol M. Ash
Mrs. Sally Read Bacon
Bank of America
Mr. and Mrs. Curtis D. Bartz
Dr. and Mrs. Arnold G. Bauer
Mr. and Mrs. Richard J. Beck
Mr. and Mrs. John Benish
Ms. Nancy Berger
Mr. and Mrs. Peter F. Bertollini
Mr. and Mrs. Clifford D. Biddick
Mr. and Mrs. Ronald A. Black
Mr. Ellis Boal
Mrs. Lois A. Bolan
Ms. Donna M. Boris
Mr. James J. Bownes
Mrs. Geraldine Brady
Mr. and Mrs. Karl C. Branstner
Mr. and Mrs. William P. Brennan
Mr. and Mrs. David A. Brockman
Mr. and Mrs. James Brown, Sr.
Don and Jan Buchanan
Donald and Bonnie Budzynski
Ms. Mary Jo Buhr
Mr. and Mrs. Thomas H. Burks
Mr. and Mrs. Van W. Burmeister
Mrs. Eunice L. Burns
Ms. Ann Joslyn Burrows
Mrs. G. Robert Buttrick
Mr. and Mrs. Will Campbell
Ms. Sydney Chase
Chris and Jayne Chickering
Ms. Joanne Church
James and Carolyn Cloutier
Mr. and Mrs. Edward J. Coffman
Susan Garwood and Hugh Conklin
Mr. Fred Connors
Ms. Barbara L. Cullman
Ms. Diane Curtis
Valerie Olinik-Damstra and Richard Damstra
Cynthia Rutherford and Alan Dika
Dee E. Drake
Mr. and Mrs. Elmer G. Dubey
Mr. and Mrs. Stephen Duncan
Mr. and Mrs. Philip Edwards
Mr. Victor Fabro
Mr. William M. Fairhurst
Mrs. Elizabeth C. Feldmann
Rev. Bruce W. Felker
Mr. and Mrs. Frederick J. Flavell
Ms. Janet Forgione
Mr. and Mrs. John E. Fought
Mr. James W. Freeman
Ms. Mary Ellen Furseth
Ruthmary Gentry
Mr. and Mrs. Arthur C. Gerhan
Gingerbread House
Mr. and Mrs. Douglas E. Gordon
Mr. and Mrs. John Gosnell
Mr. and Mrs. Richard M. Gulau
Mr. Robert Haessler
Haggard's Inc.
Father Thomas Haren
Ms. Sarah Hartman
Linda Heller
Mr. and Mrs. James Heydenburg
Mr. and Mrs. Mark Higdon
Hills of Walloon Association

Dr. and Mrs. Dale R. Hines
Mr. and Mrs. Robert F. Hocken
Nan Hogan
Mr. Norvin Holm
Ruth M. Huber
Mary Ellen Hughes
Don and Barb Hulbert
Mr. Thomas Isaia
Mr. and Mrs. Michael Jablonski
Mr. and Mrs. Gregory Jackson
Mr. and Mrs. Laban P. Jackson
Mr. Gerald S. Kasprzyk
Mr. and Mrs. Ronald Kauper
Mr. and Mrs. Marshall L. Keller
Mr. Adam A. Kennedy
Ms. Janet Killian
Mary Kinkle
Mr. and Mrs. Charles R. Kinnaird
Ms. Mary Jayne Knaff
Mr. and Mrs. Quinton L. Kuebler
Mr. and Mrs. Jerry J. Kulka
Mr. and Mrs. Dave Kwiatkowski
Mr. Claude Lambert
Mrs. Dolores Lang
Mr. John J. Lawrey
Mr. Joel D. Lerman
Rabbi and Mrs. John A. Linder
Dr. and Mrs. John MacKenzie
Mr. and Mrs. Jack Mayer
Drayton and Carol McClelland, Jr.
Mr. Charles McCord
Mr. and Mrs. Dan McElroy
Mr. and Mrs. Ray K. McMullen
Mr. Robert L. Metzger
Drs. Bill and Jane Millar
Mr. and Mrs. Bruce A. Miller
Mr. Ralph L. Moore
Mr. and Mrs. Reginald Moxley
Mrs. Rosemary A. Mueller
Mr. Adolph J. Neeme
Dr. and Mrs. Harold E. Nelson
Mr. and Mrs. Grover Niergarth
Mr. Thomas B. North
Mr. and Mrs. Donald F. Novey
Mr. and Mrs. Jay T. O'Neill
Mr. and Mrs. Robert A. Offenhauser
Mrs. Enid Ollila
Mr. and Mrs. Joseph Paczesny
Mr. and Mrs. John M. Parker
Mr. Roland W. Patenge
Mr. Kenneth Patterson
Mr. John Pawelek
Mrs. Stewart T. Peet
Mr. and Mrs. Alexander I. Pirie
Mr. and Mrs. Dean Pollard
Dr. and Mrs. Jeff Porter
Mrs. Beverly J. Ragland
Dr. and Mrs. Donald W. Ray
Mrs. Virginia S. Reed
Mr. and Mrs. Donald Rees
Mr. Clark S. Richardson
Mr. and Mrs. Edmund C. Risdon, III
Mr. and Mrs. Robert R. Rorich
Dan and Alice Ross
Mrs. Virginia P. Rountree
Mr. and Mrs. David Runyan
Mr. John C. Ryan
Mrs. Nancy Salar
Mr. John T. Santinga
Mr. Charles Schafer
Messrs. Richard H. and Garth A. Schiffer
Mr. Michael Hamilton Schirmer
Mrs. Carol A. Schmier
Shore Drive Study Club
Mr. Daniel M. Sinclair
Mr. Mark H. Sinclair
Mr. Clyde L. Slutz
Ms. Ann B. Smith
Mr. and Mrs. Darrel Smith
Linda and Doug Springsteen

Mrs. Edward F. Stankewitz
Albert N. Steck
Ms. Olga Stott
Mr. and Mrs. Jeffrey T. Streebman
Mr. Fredric H. Strickland
Mr. and Mrs. James L. Sutherland
Mr. and Mrs. Robert S. Swanson
Dr. Grenetta Thomasey
Mrs. Warren Todter
Mr. and Mrs. J. L. Tomlinson
Mrs. Richard Tousain
Mr. and Mrs. Robert B. Turpin
William Twiddy
Beverly Van Slot
Dr. and Mrs. Richard L. Varley
Ms. Margaret N. Ward
Joyce and Steve Watson
Mr. and Mrs. Wallace E. Weir
Mr. and Mrs. William G. Westrick
Mr. Thomas G. Whittingham
Mr. and Mrs. Robert Leo Williams
Mr. and Mrs. Paul Witting
Mr. and Mrs. Louis K. Wood
Mrs. Betty J. Wright

Charlevoix County Community Foundation Tip of the Mitt Watershed Council Fund

John and Raechel Alberts
Mr. and Mrs. James L. Barber
Mr. and Mrs. Samuel H. Williamson
Alice Wright

Petoskey-Harbor Springs Area Community Foundation Tip of the Mitt Watershed Council Water Quality Fund

Mr. and Mrs. Norm Bennett
Alexis M. Kaczynski and Eric Grandstaff
Wil Cwikiel and Gail Gruenwald
Drs. Andris and Irene Kazmers
Mr. and Mrs. Raoul LePage
Mr. and Mrs. Ernest H. Mainland
Mr. Neil Marzella
Mrs. Steve Miller
Maureen Nicholson
Mr. and Mrs. John Norton
Mr. and Mrs. James P. Nuffer
Catherine S. McVicker and Eric Rasmussen
Mr. and Mrs. Curt Regentin
Marcia and Trish Shattuck
Dr. and Mrs. Philip Woolcott, Jr.

Grantors

Bay Harbor Foundation
Boat U.S. Foundation
Clannad Foundation
Dole Family Foundation
Elk-Skegemog Lakes Association
Herrington-Fitch Family Foundation
Lake Charlevoix Association
MDNRE-Gaylord Office
Michigan Environmental Council
National Wildlife Federation
Norcross Wildlife Foundation
Mr. and Mrs. Mark W. Paddock
Petoskey Plastics, Inc.
Petoskey-Harbor Springs Area
Community Foundation
Schoenleber Foundation, Inc.

Your name is important to us. If your name has been misspelled, incorrectly listed, or omitted, please accept our apologies and bring the error to our attention so that we may correct our records.

The Oleson Foundation
US Fish and Wildlife
US Inc.
Wal-Mart
Watershed Center of Grand Traverse Bay

Gifts-In-Kind **Including Whale of a Sale**

American Spoon Foods, Inc.
Bear Cove Marina, Inc.
Mr. and Mrs. Scott T. Beatty
Mr. and Mrs. Howard Canada
Richard and Lisa Ceuninck
Robert and Ruth Chapman
Mr. and Mrs. David G. Crouse
Dr. and Mrs. Allen D. Damschroder
John and Barbara Danly
Mrs. David DeWindt
Dewitt Marine Inc
Mr. and Mrs. Richard E. Dexter
Cynthia Rutherford and Alan Dika
Michael L. and Rhea A. Dow
Dee Irwin and Pat Duffy
East Jordan Iron Works, Inc.
Emmet County Dept. of Public Works
Dr. and Mrs. Gordon Fleming
Mr. and Mrs. Dan Francis
Glen's Markets
Great Lakes Boating
Ms. Debra Hansen
Bernie Hazelton
Hoffman Landscaping, Inc
Larry and Pat Horosko
Mr. and Mrs. James H. Howe, III
Indian River Chamber of Commerce
Irish Boat Shop
Johan's Bakery
Julienne Tomatoes
Dr. and Mrs. Michael W. Koskus
Mr. and Mrs. Richard D. Kudner
Mrs. Robert J. Kuehn
Mr. and Mrs. Ben R. Mayne, II
McLean & Eakin Booksellers
Meyer Ace Hardware
Thomas and Margaret Myers
Mr. and Mrs. Howard W. Newkirk
Mrs. Maxine B. Noll
Olson's Foods
Mr. and Mrs. Tom Orlow
The Outfitter of Harbor Springs
Thomas Peterson
Mr. Thomas C. Peterson
Petoskey Plastics, Inc.
Quality Sports & Tool Consignment
Mr. and Mrs. Kent Reynolds
Roast and Toast
Steve and Copland Rudolph
Ryde Marine, Inc.
Scalawag's Whitefish & Chips, UPTADA, LLC
Mr. and Mrs. Peter M. Sears
Mr. and Mrs. Richard L. Segrist
Mr. and Mrs. Albert Sicking
Marjorie Smith
Dr. and Mrs. Stanley R. Smith
Thomas Smith
Spicy Bob's
Mike and Connie Stevens
University of Michigan Biological Station
David and Kathy Wallace
Walmart

Walstrom Marine, Inc.
Mrs. Dolores Wehrenberg
Jim and Ann Wilderom
Mr. and Mrs. Robert L. Zielsdorf

Matching Gift Program

Dow Coming Matching Gifts Program
Eaton Corporation
Gap Foundation
GE Foundation
Elk Rapids Rotary
IBM Corporation
Irish Boat Shop
J.P. Morgan Chase Foundation
Post-Newsweek Stations
Matching Gifts Program

Hororariums

Linda Badalucco
Linda Heller
Jayne Chickering
Chris Chickering
Kevin Cronk
Charlevoix Area Garden Club
Shore Drive Study Club
Arthur Curtis
Mr. Owen Curtis
Jennifer Gelb
Emmet County MSU Extension
Trey Graham
Sara H. Graham
Jennifer McKay
Kathleen S. Glass
Valerie Olinik-Damstra
Hidden Valley Shores Association
Raven Hill Discovery Center
Leonard D. Slutz
Mr. William L. Slutz
Grenetta Thomassey
Lori Lind and Jill Ryan

Memorials

Annette Blalock
Ms. Joan L. Caldwell
Martha Cameron
Mr. Scott Schaefer
Donna Carruthers
Heidi Hill and Bruce Davis
Fred Connors
Ms. Dolly Nethercot
Mr. and Mrs. Gene Pezon
Dr. Richard Courtney
Mr. and Mrs. Stephen R. Pauli
Jack Couture
Mr. Wilfred Belanger
Mr. and Mrs. Loren F. Bonney
Burns Investment Group
Mr. and Mrs. Martin T. Carroll
Cathy Brubaker-Clarke
Mr. and Mrs. John Cleasby
Mr. and Mrs. Joseph E. Colombo
Craig Culbertson
Julie Delaurence
Mary K. Couture-Dobie and Walter Dobie
Dr. and Mrs. Peter Duhamel

Mary Jane Galetto
Heart of the Hills Swim Club, Inc.
Dr. and Mrs. Kenneth W. Hock
Horizon Environmental
Mr. and Mrs. Tom Kemp
Mr. and Mrs. Craig Lukos
Anna Maiuri
Mary Lou Major
Mr. Ronald Mann
Mr. and Mrs. Mike Matone
Mr. and Mrs. Charles McIntyre
Patricia McKay
Mr. and Mrs. Terrence O'Connor
Mr. and Mrs. Carl Pearson
Mr. and Mrs. Don Pixley
Mr. Kenneth J. Price
Mr. and Mrs. George B. Smith
Mr. and Mrs. LeRoy Taylor
Mr. and Mrs. Bernard L. Thibodeau
Patricia Van Den Brand
Eddie Ernest
Duncan Bay Boat Club
Lewis Hopkins
Mrs. Ted Lauber
Perry Jerrini
Heidi Hill and Bruce Davis
David Lee
Ryde Marine, Inc.
Thomas K. Lowry
Bank of America
J.L. Buchanan
Mr. and Mrs. Thomas H. Carruthers, IV
Karen J. Cazaban
Mr. and Mrs. David Irish
Mr. Richard S. Kulczycki
Mr. and Mrs. Kenneth MacDonald
Mr. and Mrs. William A Morrow
Lisa Nicol
Edward B. Palm
Petoskey Plastics, Inc.
Mr. and Mrs. Chris Pineno
Mr. and Mrs. Mark Pinney
Mr. and Mrs. Lowell D. Rasmussen
Mr. and Mrs. Durwood Shawl
Mr. and Mrs. William R. Wallin
Mr. and Mrs. Howard Willett
Matt and Sara Winstanley
Fred Meissinger
Duncan Bay Boat Club
Bonita Miller-Gilford
Ms. Linda Badalucco
Howard Pfost
Mrs. Ted Lauber
Robert Rousseau
Mr. and Mrs. Bowden Brown
Dave Schout
Duncan Bay Boat Club
Mary Shands
Heidi Hill and Bruce Davis
Theodore H. Smith, Jr.
East Burt Lake Association
Edward Stenger
Mr. and Mrs. Bowden Brown
Betty Young
Steven and Linda Alexander

Thank you Volunteers

We could not accomplish the many tasks and projects that need to be done without the help of our volunteers. If you would like to lend a hand in the future, please visit our website for a list of volunteer opportunities.

www.watershedcouncil.org/volunteer

R.S.V.P. Volunteers

Sharon Brown
Ann Burek
Tillie Cone
Virginia Corpus
Pearl Dally
Doris Fedus
Gretchen Gregory
Alice Hill
Marian Jurries
Carolyn Keller
Ellen Massey
Marjorie E. May
Isabelle McDonald
Maxine McDowell
Paula Perttu
Irene Phelps
Virginia Stolt
Marge Upton
Sharon Van Meter
Molly Walenta
Bernadette Walsh

Special Volunteers

Bear River Cleanup Volunteers
Beetle Collectors for
Purple Loosestrife eradication
Alan Beyer - publications inventory
Andrew Beyer - publications inventory
Cody Beyer - publications inventory
Cam Carpenter - data entry
Chandler's/Cava - Fusion
Kathy Colby - VSM samples
Wil Cwikiel - Guest Speaker/Guide
Wednesdays on the Water Series
Merlin Dumbille of WTCM-AM 580
bi-weekly interviews
Irish Boat Shop - Whale of a Sale location
Sally Kraegel - data entry
Lake View Academy - Boater Bundle
Construction
Doug Morse - VSM samples
NCMC - VSM Indoor
Sorting/Identification events
Claire Rassmusen - Gaps Analysis
David Spieser - Gardening
UniLock and Live Roof - Lunch and Learn
Guest Speakers

Volunteer Lake Monitors 25 years of data collection!

Ralph Ayres - Walloon, Wildwood
Dann Balesky - Burt, South
Cliff Biddick - Charlevoix
William R. Brooks - Douglas, Otsego
Dr. Art Budden - Walloon, North
Dale Claudepierre - Skegemog
Elwin Coll - Twin
Richard and Lori Crothers - Walloon, West
Joseph Dilger - Deer

Dick Elliot - Paradise
Bruce Fleker - Huffman
John & Dianne Fowler - Pickerel
Jon Gafill - Michigan, Little Traverse Bay
Tom Gschwind - Thumb
Doug & Karen Hadley - Nowland
Steve & Anne Hansen
Charlevoix, South Arm
Bill Hicklin - Michigan, Bay Harbor
John and Joan Hutto - Burt
Charles Lampert - Michigan
Little Traverse Bay
Fabian LaVigne - Long
Anthony Naylor - Mullett, Mullett Creek
Joseph Nerone - Six Mile
Mary Anne & Bill Newman - Walloon
Dr. G. Michael Pierce - Crooked
Kevin & Dianna Prediger - Mullett, Pigeon Bay
Donald Renton - Thumb
John Ressler - Twin
George Rowe - Marion
Jim Schneider - Thayer
Richard Segrist - Douglas, Cheboygan
Daniel Sinclair - Bass
William Stetson - Walloon, Foot
Don Venburg - Thayer
Bob Williams - Black
Thom Yokum - Elk
Beverly Zelt - Munro

Volunteer Stream Monitors 5 years of data collection!

Victoria Anderson - Tannery Creek
Gary Barknecht - Boyne River South
Patty Barrette - Mullett Creek
James Benzing - Any
Norton Bretz - Eastport Creek
Cam Carpenter - Any
Kathy Colby - Expert
Nancy Cunningham - Boyne River South
Barb & Tony Dauer - Milligan Creek
John and Kay DeCarli - Kimberly
or Milligan Creek
Rick Dexter - Horton Creek
Pat Duffy - Stover Creek
Scot Egleston - Horton Creek
Audrey Etienne - Horton Creek
Jim and Judy Flanagan - Horton Creek
Jonathan Friendly - Horton Creek
Doug Fuller - Expert
Elaine & Wally Gemignani - Mullett Creek
Neal Godby - Expert
Bekki Heckman - Any
Bill Henne - Horton Creek
Susan Howard - Boyne River North
Dee Irwin - Stover Creek
Gregg Keith - Bear River Upper
Brian Kozminski - Tannery Creek
Robert LaPoint - Boyne River South
Chrystal Marhugh - Expert
Tom Myers - Lake Charlevoix Area

Tom Ochs - Bear River Lower
John Pickering - Stover Creek
Ralph Rucinski - Kimberly Creek
Larry Rychlick - Floater
Darrell Schwalm - Kimberly Creek
Gregg Seaman - Stover Creek
Karie Slavik - Floater
John & Rhonda Smit - Sturgeon River
John Snook - Milligan Creek
Scott & Christina Steensma -
Kimberly Creek
Diane & Ed Strzelinski -
Boyne River, North
Roy Tassava - Mullett Creek
Lee Tegland - Any
John Teesdale - Jordan River
Tom Terry - Boyne River South
Beth Varty - Boyne River South
Anne Zukowski - Jordan River

Native Plant Sale Program

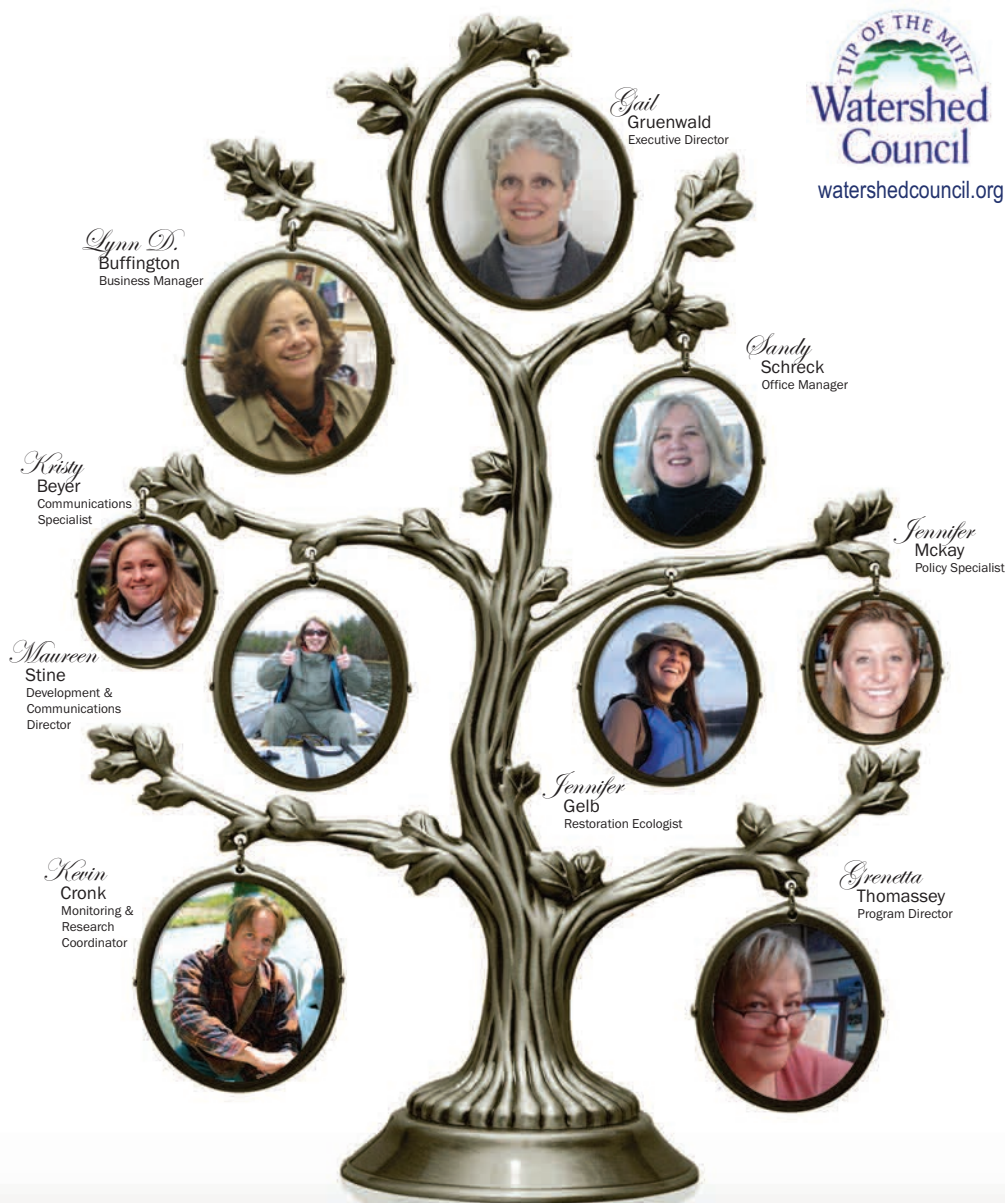
Cody Beyer
Chris Leifson
Barbara Lindsey
David Spieser
Bill Stetson
Connie Vorenkamp
Trish Woolcott

Experience Lake Charlevoix

Ken Allen
Mike Green and crew at Beaver Island
Boat Company
Linda Burgert
Kris Busk
Michael Buttigieg
Sue and Mike Costa
Nancy Cunningham
Mike Dow
Susan and Ed Gansen
Marcy Knoll
Roxanne Merrick
Dan Mishler
Sara Rigney
Tom Snow
US Coast Guard, Charlevoix Station
Susan Vron dran
Paul Witting

Interns

Bridget Brown
Shelby Goss
Dan Myers
Josh Pugh



Building on our past. Forging new ground in 2010.

Leave a legacy of fresh water.

Each year, we raise most of our funds from a diverse network of individuals, family foundations, and businesses - from people just like you - that care deeply for protecting and restoring our vital water resources. The simplest way to give is to write a check or donate online. But just as resources come in many forms, so do opportunities to give. For expert guidance on making a contribution please contact Gail Gruenwald or Maureen Stine at (231) 347-1181.